

Product datasheet

Anti-GGT7 antibody ab72662

1 Image

Overview

<b>Product name</b>	Anti-GGT7 antibody
<b>Description</b>	Rabbit polyclonal to GGT7
<b>Host species</b>	Rabbit
<b>Specificity</b>	ab72662 detects endogenous levels of fragment of activated GGT7 resulting from cleavage adjacent to Thr472.
<b>Tested applications</b>	<b>Suitable for:</b> WB, ELISA
<b>Species reactivity</b>	<b>Reacts with:</b> Mouse, Rat, Human
<b>Immunogen</b>	Synthetic peptide derived from human GGT7.
<b>Positive control</b>	Extracts from Jurkat cells treated with etoposide (25uM, 24hours).

Properties

<b>Form</b>	Liquid
<b>Storage instructions</b>	Store at -20°C. Stable for 12 months at -20°C
<b>Storage buffer</b>	Preservative: 0.02% Sodium Azide Constituents: 50% Glycerol, PBS (without Mg <sup>2+</sup> and Ca <sup>2+</sup> ), 150mM Sodium chloride, pH 7.4
<b>Purity</b>	Immunogen affinity purified
<b>Clonality</b>	Polyclonal
<b>Isotype</b>	IgG

Applications

Our [Abpromise guarantee](#) covers the use of **ab72662** in the following tested applications.

The application notes include recommended starting dilutions; optimal dilutions/concentrations should be determined by the end user.

Application	Abreviews	Notes
WB		
ELISA		

## Application notes

ELISA: 1/10000.

WB: 1/500 - 1/1000. Detects a band of approximately 51 kDa (predicted molecular weight: 57 kDa).

Not yet tested in other applications.

Optimal dilutions/concentrations should be determined by the end user.

## Target

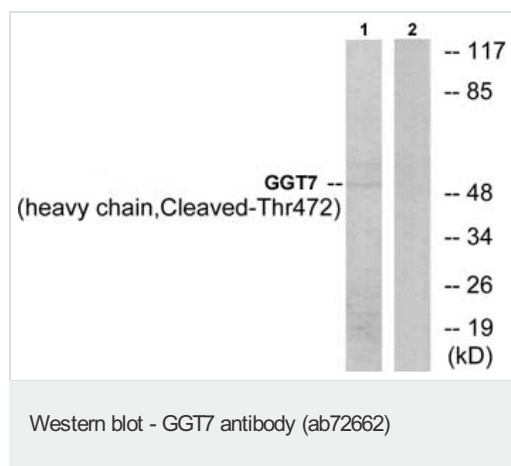
### Relevance

GGT7 (Gamma-glutamyltransferase 7) is a member of a gene family that encodes enzymes involved in both the metabolism of glutathione and in the transpeptidation of amino acids. Changes in the activity of gamma glutamyltransferase may signal preneoplastic or toxic conditions in the liver or kidney. GGT7 consists of a heavy and a light chain, and it can interact with CT120, a plasma membrane associated protein that is possibly involved in lung carcinogenesis.

### Cellular localization

Membrane; Single pass type II membrane protein.

## Images



**All lanes :** Anti-GGT7 antibody (ab72662) at 1/500 dilution

**Lane 1 :** Extracts from Jurkat cells, treated with etoposide (25uM, 24hours)

**Lane 2 :** Extracts from Jurkat cells, treated with etoposide (25uM, 24hours) with C1-peptide at 10 µg

Lysates/proteins at 30 µg per lane.

**Predicted band size:** 57 kDa

**Observed band size:** 51 kDa

**Please note:** All products are "FOR RESEARCH USE ONLY AND ARE NOT INTENDED FOR DIAGNOSTIC OR THERAPEUTIC USE"

## Our Promise to you: Quality guaranteed and expert technical support

- Replacement or refund for products not performing as stated on the datasheet
- Valid for 12 months from date of delivery
- Response to your inquiry within 24 hours
- We provide support in Chinese, English, French, German, Japanese and Spanish
- Extensive multi-media technical resources to help you

- We investigate all quality concerns to ensure our products perform to the highest standards

If the product does not perform as described on this datasheet, we will offer a refund or replacement. For full details of the Abpromise, please visit <http://www.abcam.com/abpromise> or contact our technical team.

### **Terms and conditions**

---

- Guarantee only valid for products bought direct from Abcam or one of our authorized distributors