

Product datasheet

Anti-REM2 antibody ab73088

1 Abreviews 2 Images

Overview

Product name	Anti-REM2 antibody
Description	Mouse polyclonal to REM2
Host species	Mouse
Tested applications	Suitable for: WB, ICC/IF
Species reactivity	Reacts with: Human
Immunogen	Full length Human REM2 protein (AAH35663, 1 a.a. ~ 331 a.a).
Positive control	HeLa cells. REM2 transfected 293T cell lysate.

Properties

Form	Liquid
Storage instructions	Shipped at 4°C. Upon delivery aliquot. Store at -20°C or -80°C. Avoid freeze / thaw cycle.
Storage buffer	pH: 7.4 Constituent: PBS
Purity	Protein A purified
Clonality	Polyclonal
Isotype	IgG

Applications

Our [Abpromise guarantee](#) covers the use of **ab73088** in the following tested applications.

The application notes include recommended starting dilutions; optimal dilutions/concentrations should be determined by the end user.

Application	Abreviews	Notes
WB		
ICC/IF		

Application notes	ICC/IF: Use at a concentration of 10 µg/ml. Protein A purify ab73088 before starting ICC/IF procedure. WB: 1/500 - 1/1000. Predicted molecular weight: 36 kDa.
--------------------------	---

Not yet tested in other applications.

Optimal dilutions/concentrations should be determined by the end user.

Target

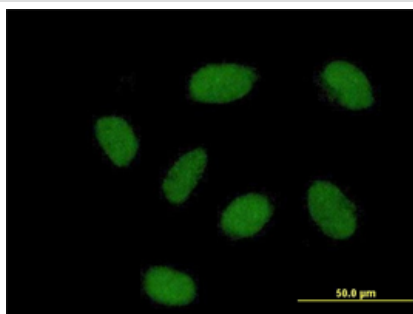
Relevance

REM2, a Ras-like GTPase, may be involved in increasing endothelial cell proliferation and the induction of angiogenesis. REM2 belongs to the small GTPase superfamily, RGK family. It binds GTP saturably and exhibits a low intrinsic rate of GTP hydrolysis.

Cellular localization

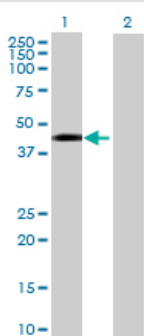
Cell Membrane

Images



Immunofluorescent staining of REM2 in HeLa cells using Protein A purified ab73088 at 10µg/ml.

Immunocytochemistry/ Immunofluorescence - REM2 antibody (ab73088)



All lanes : Anti-REM2 antibody (ab73088) at 1/500 dilution

Lane 1 : REM2 transfected 293T cell lysate

Lane 2 : Non-transfected 293T cell lysate

Lysates/proteins at 25 µg per lane.

Western blot - REM2 antibody (ab73088)

Secondary

All lanes : Goat Anti-Mouse IgG (H&L)-HRP at 1/2500 dilution

Predicted band size: 36 kDa

Observed band size: 45 kDa

Please note: All products are "FOR RESEARCH USE ONLY AND ARE NOT INTENDED FOR DIAGNOSTIC OR THERAPEUTIC USE"

Our Abpromise to you: Quality guaranteed and expert technical support

- Replacement or refund for products not performing as stated on the datasheet
- Valid for 12 months from date of delivery
- Response to your inquiry within 24 hours

- We provide support in Chinese, English, French, German, Japanese and Spanish
- Extensive multi-media technical resources to help you
- We investigate all quality concerns to ensure our products perform to the highest standards

If the product does not perform as described on this datasheet, we will offer a refund or replacement. For full details of the Abpromise, please visit <http://www.abcam.com/abpromise> or contact our technical team.

Terms and conditions

- Guarantee only valid for products bought direct from Abcam or one of our authorized distributors