

Product datasheet

Anti-Topoisomerase II alpha antibody ab73724

2 Images

Overview

| | |
|----------------------------|--|
| Product name | Anti-Topoisomerase II alpha antibody |
| Description | Rabbit polyclonal to Topoisomerase II alpha |
| Host species | Rabbit |
| Specificity | This antibody detects endogenous levels of total Topoisomerase II alpha protein. |
| Tested applications | Suitable for: WB, ELISA, IHC-P |
| Species reactivity | Reacts with: Human |
| Immunogen | A synthesized non-phosphopeptide derived from human Topoisomerase II alpha around the phosphorylation site of serine 1106 (E-E-S ^P -D-N). |
| Positive control | Human breast carcinoma tissue and extracts from LOVO cells. |

Properties

| | |
|-----------------------------|--|
| Form | Liquid |
| Storage instructions | Shipped at 4°C. Upon delivery aliquot and store at -20°C. Avoid freeze / thaw cycles. |
| Storage buffer | Preservative: 0.02% Sodium Azide Constituents: 50% Glycerol, PBS, 150mM Sodium chloride, pH 7.4 |
| Purity | Immunogen affinity purified |
| Clonality | Polyclonal |
| Isotype | IgG |

Applications

Our [Abpromise guarantee](#) covers the use of **ab73724** in the following tested applications.

The application notes include recommended starting dilutions; optimal dilutions/concentrations should be determined by the end user.

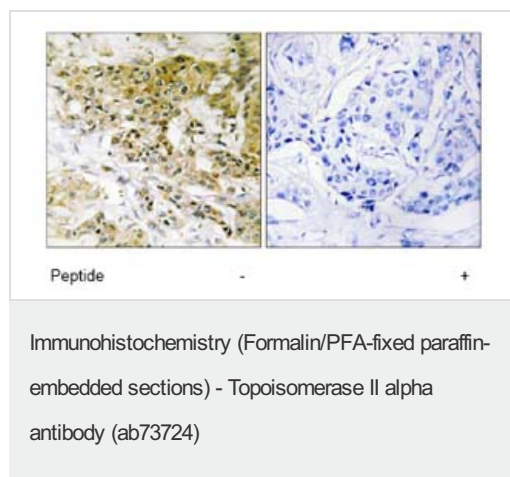
| Application | Abreviews | Notes |
|-------------|-----------|--|
| WB | | 1/500 - 1/1000. Detects a band of approximately 174 kDa (predicted molecular weight: 174 kDa). |
| ELISA | | 1/5000. |

| Application | Abreviews | Notes |
|-------------|-----------|--|
| IHC-P | | Use at an assay dependent concentration. |

Target

| | |
|---|--|
| Function | Control of topological states of DNA by transient breakage and subsequent rejoining of DNA strands. Topoisomerase II makes double-strand breaks. |
| Sequence similarities | Belongs to the type II topoisomerase family. |
| Post-translational modifications | Phosphorylation has no effect on catalytic activity. |
| Cellular localization | Cytoplasm. Nucleus > nucleoplasm. Generally located in the nucleoplasm. |

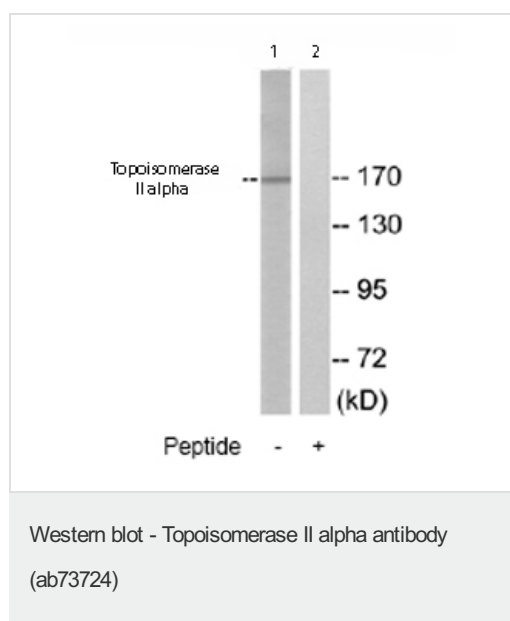
Images



Immunohistochemistry analysis of paraffin-embedded human breast carcinoma tissue using ab73724 at a 1:50 dilution.

Left image un-treated.

Right image treated with immunizing peptide.



All lanes : Anti-Topoisomerase II alpha antibody (ab73724) at 1/500 dilution

Lane 1 : Extracts from LOVO cells

Lane 2 : Extracts from LOVO cells plus 10µg immunizing peptide

Lysates/proteins at 30 µg per lane.

Predicted band size: 174 kDa

Observed band size: 174 kDa

Our Abpromise to you: Quality guaranteed and expert technical support

- Replacement or refund for products not performing as stated on the datasheet
- Valid for 12 months from date of delivery
- Response to your inquiry within 24 hours

- We provide support in Chinese, English, French, German, Japanese and Spanish
- Extensive multi-media technical resources to help you
- We investigate all quality concerns to ensure our products perform to the highest standards

If the product does not perform as described on this datasheet, we will offer a refund or replacement. For full details of the Abpromise, please visit <http://www.abcam.com/abpromise> or contact our technical team.

Terms and conditions

- Guarantee only valid for products bought direct from Abcam or one of our authorized distributors