

## Product datasheet

# Anti-LRP3 antibody ab74100

1 Image

### Overview

<b>Product name</b>	Anti-LRP3 antibody
<b>Description</b>	Rabbit polyclonal to LRP3
<b>Specificity</b>	ab74100 detects endogenous levels of total LRP3 protein.
<b>Tested applications</b>	<b>Suitable for:</b> WB, ELISA
<b>Species reactivity</b>	<b>Reacts with:</b> Mouse, Human <b>Predicted to work with:</b> Rat
<b>Immunogen</b>	Synthesized peptide derived from an internal sequence of human LRP3.
<b>Positive control</b>	Extracts from RAW264.7 cells

### Properties

<b>Form</b>	Liquid
<b>Storage instructions</b>	Shipped at 4°C. Upon delivery aliquot and store at -20°C. Avoid freeze / thaw cycles.
<b>Storage buffer</b>	Preservative: 0.02% Sodium Azide Constituents: 50% Glycerol, PBS (without Mg <sup>2+</sup> and Ca <sup>2+</sup> ), 150mM Sodium chloride, pH 7.4
<b>Purity</b>	Immunogen affinity purified
<b>Purification notes</b>	The antibody was affinity purified from rabbit antiserum by affinity chromatography using epitope specific immunogen.
<b>Clonality</b>	Polyclonal
<b>Isotype</b>	IgG

### Applications

Our [Abpromise guarantee](#) covers the use of **ab74100** in the following tested applications.

The application notes include recommended starting dilutions; optimal dilutions/concentrations should be determined by the end user.

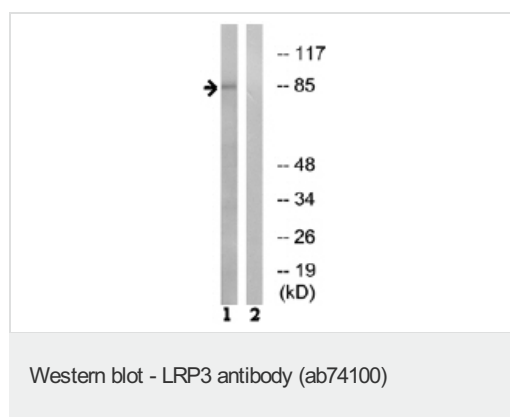
Application	Abreviews	Notes
WB		1/500 - 1/1000. Predicted molecular weight: 83 kDa.

Application	Abreviews	Notes
ELISA		1/40000.

## Target

<b>Function</b>	Probable receptor, which may be involved in the internalization of lipophilic molecules and/or signal transduction. Its precise role is however unclear, since it does not bind to very low density lipoprotein (VLDL) or to LRPAP1 in vitro.
<b>Tissue specificity</b>	Widely expressed. Highly expressed in skeletal muscle and ovary. Expressed at intermediate level in heart, brain, liver, pancreas, prostate and small intestine. Weakly expressed in testis, colon and leukocyte.
<b>Sequence similarities</b>	Belongs to the LDLR family. Contains 2 CUB domains. Contains 4 LDL-receptor class A domains.
<b>Cellular localization</b>	Membrane. Membrane > coated pit.

## Images



**All lanes :** Anti-LRP3 antibody (ab74100) at 1/500 dilution

**Lane 1 :** Extracts from RAW264.7 cells with no peptide

**Lane 2 :** Extracts from RAW264.7 cells with immunizing peptide at 5 µg

Lysates/proteins at 5 µg per lane.

**Predicted band size :** 83 kDa

**Observed band size :** 83 kDa

**Please note:** All products are "FOR RESEARCH USE ONLY AND ARE NOT INTENDED FOR DIAGNOSTIC OR THERAPEUTIC USE"

## Our Abpromise to you: Quality guaranteed and expert technical support

- Replacement or refund for products not performing as stated on the datasheet
- Valid for 12 months from date of delivery
- Response to your inquiry within 24 hours
- We provide support in Chinese, English, French, German, Japanese and Spanish
- Extensive multi-media technical resources to help you

- We investigate all quality concerns to ensure our products perform to the highest standards

If the product does not perform as described on this datasheet, we will offer a refund or replacement. For full details of the Abpromise, please visit <http://www.abcam.com/abpromise> or contact our technical team.

### **Terms and conditions**

---

- Guarantee only valid for products bought direct from Abcam or one of our authorized distributors