


Product datasheet

Anti-ZC3H11A antibody ab74661

1 Image

Overview

Product name	Anti-ZC3H11A antibody
Description	Rabbit polyclonal to ZC3H11A
Host species	Rabbit
Tested applications	Suitable for: ELISA, WB
Species reactivity	Reacts with: Human Predicted to work with: Mouse 
Immunogen	Synthetic peptide derived from an internal region of human ZC3H11A
Positive control	Extracts from COS cells.

Properties

Form	Liquid
Storage instructions	Shipped at 4°C. Upon delivery aliquot and store at -20°C. Avoid freeze / thaw cycles.
Storage buffer	Preservative: 0.02% Sodium Azide Constituents: 50% Glycerol, PBS (without Mg ²⁺ and Ca ²⁺), 150mM Sodium chloride, pH 7.4
Purity	Immunogen affinity purified
Clonality	Polyclonal
Isotype	IgG

Applications

Our [Abpromise guarantee](#) covers the use of **ab74661** in the following tested applications.

The application notes include recommended starting dilutions; optimal dilutions/concentrations should be determined by the end user.

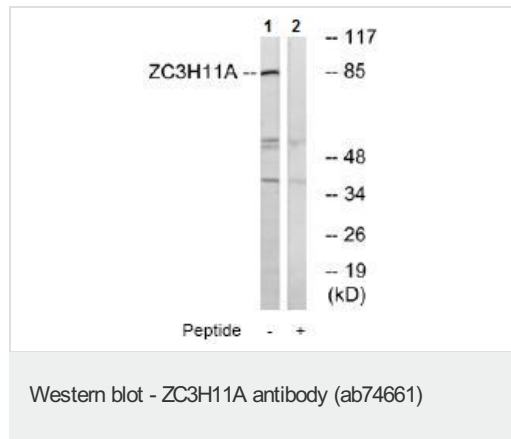
Application	Abreviews	Notes
ELISA		1/20000.
WB		1/500 - 1/1000. Predicted molecular weight: 89 kDa.

Target

Relevance

ZC3H11A, also known as zinc finger CCCH type containing 11A, contains 3 C3H1-type zinc fingers.

Images



All lanes : Anti-ZC3H11A antibody (ab74661)
at 1/500 dilution

Lane 1 : extracts from COS cells

Lane 2 : extracts from COS cells with
immunizing peptide at 10 µg

Lysates/proteins at 30 µg per lane.

Predicted band size: 89 kDa

Observed band size: 89 kDa

Additional bands at: 40 kDa, 55 kDa. We
are unsure as to the identity of these extra
bands.

Please note: All products are "FOR RESEARCH USE ONLY AND ARE NOT INTENDED FOR DIAGNOSTIC OR THERAPEUTIC USE"

Our Abpromise to you: Quality guaranteed and expert technical support

- Replacement or refund for products not performing as stated on the datasheet
- Valid for 12 months from date of delivery
- Response to your inquiry within 24 hours
- We provide support in Chinese, English, French, German, Japanese and Spanish
- Extensive multi-media technical resources to help you
- We investigate all quality concerns to ensure our products perform to the highest standards

If the product does not perform as described on this datasheet, we will offer a refund or replacement. For full details of the Abpromise, please visit <http://www.abcam.com/abpromise> or contact our technical team.

Terms and conditions

- Guarantee only valid for products bought direct from Abcam or one of our authorized distributors