


Product datasheet

Anti-GCOM1 antibody ab74771

1 Image

Overview

Product name	Anti-GCOM1 antibody
Description	Rabbit polyclonal to GCOM1
Host species	Rabbit
Tested applications	Suitable for: WB
Species reactivity	Reacts with: Human Predicted to work with: Mouse, Rat, Rabbit, Horse, Guinea pig, Cow, Cat, Dog 
Immunogen	A synthetic peptide corresponding to a region of human GCOM1
Positive control	721_B cel lysate

Properties

Form	Liquid
Storage instructions	Shipped at 4°C. Upon delivery aliquot and store at -20°C or -80°C. Avoid repeated freeze / thaw cycles.
Storage buffer	Preservative: None Constituents: 2% Sucrose, PBS
Purity	Immunogen affinity purified
Purification notes	ab74771 is purified by peptide affinity chromatography method.
Clonality	Polyclonal
Isotype	IgG

Applications

Our [Abpromise guarantee](#) covers the use of **ab74771** in the following tested applications.

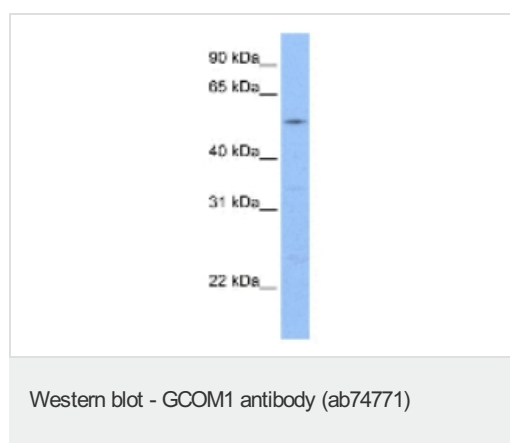
The application notes include recommended starting dilutions; optimal dilutions/concentrations should be determined by the end user.

Application	Abreviews	Notes
WB		Use a concentration of 1 µg/ml. Predicted molecular weight: 52 kDa. Good results were obtained when blocked with 5% non-fat dry milk in 0.05% PBS-T.

Target

Function	Plays a role in cellular signaling via Rho-related GTP-binding proteins and subsequent activation of transcription factor SRF (By similarity). Targets TJP1 to cell junctions. In cortical neurons, may play a role in glutaminergic signal transduction through interaction with the NMDA receptor subunit GRIN1.
Tissue specificity	Detected in heart, liver, skeletal muscle, placenta, small intestine, lung, prostate and testis.
Sequence similarities	Belongs to the MYZAP family.
Cellular localization	Cytoplasm > cytoskeleton. Cell membrane. Cytoplasm > myofibril > sarcomere > I band. Cytoplasm > myofibril > sarcomere > Z line. Cell junction. Detected predominantly at the intercalated disk in cardiomyocytes, and at low levels on sarcomeric Z disks. Colocalizes with F-actin. Colocalizes with cortical actin.

Images



Anti-GCOM1 antibody (ab74771) at 1 µg/ml +
721_B cell lysate at 10 µg

Secondary

HRP conjugated anti-Rabbit IgG at 1/50000
dilution

Predicted band size: 52 kDa

Observed band size: 52 kDa

Please note: All products are "FOR RESEARCH USE ONLY AND ARE NOT INTENDED FOR DIAGNOSTIC OR THERAPEUTIC USE"

Our Abpromise to you: Quality guaranteed and expert technical support

- Replacement or refund for products not performing as stated on the datasheet
- Valid for 12 months from date of delivery
- Response to your inquiry within 24 hours
- We provide support in Chinese, English, French, German, Japanese and Spanish
- Extensive multi-media technical resources to help you
- We investigate all quality concerns to ensure our products perform to the highest standards

If the product does not perform as described on this datasheet, we will offer a refund or replacement. For full details of the Abpromise, please visit <http://www.abcam.com/abpromise> or contact our technical team.

Terms and conditions

- Guarantee only valid for products bought direct from Abcam or one of our authorized distributors