

Product datasheet

Anti-hCG beta antibody [HCG-61] ab764

1 References 1 Image

Overview

<b>Product name</b>	Anti-hCG beta antibody [HCG-61]
<b>Description</b>	Mouse monoclonal [HCG-61] to hCG beta
<b>Specificity</b>	Reacts with beta subunit of human chorionic gonadotropin with association constant $5.1 \times 10^{10}$ l/mol. The following cross-reactivities (%) were determined by classic double-antibody radioimmunoassay using unlabelled hormones: b-hCG = 77 a-hCG = 1.3 hLH = 0.86 hFSH = < 0.5 hTSH = < 0.5
<b>Tested applications</b>	<b>Suitable for:</b> ELISA, ICC, IHC-P
<b>Species reactivity</b>	<b>Reacts with:</b> Human
<b>Immunogen</b>	Full length native protein (purified) (Human).
<b>Positive control</b>	This antibody gave a positive result in IHC in the following FFPE tissue: Human normal placenta.

Properties

<b>Form</b>	Liquid
<b>Storage instructions</b>	Shipped at 4°C. Store at +4°C short term (1-2 weeks). Upon delivery aliquot. Store at -20°C or -80°C. Avoid freeze / thaw cycle.
<b>Storage buffer</b>	Preservative: 15mM Sodium Azide Constituents: PBS, pH 7.4
<b>Purity</b>	>95% by SDS-PAGE
<b>Purification notes</b>	Purified from ascites using protein A-affinity chromatography.
<b>Clonality</b>	Monoclonal
<b>Clone number</b>	HCG-61
<b>Isotype</b>	IgG2b
<b>Light chain type</b>	unknown

Applications

Our [Abpromise guarantee](#) covers the use of **ab764** in the following tested applications.

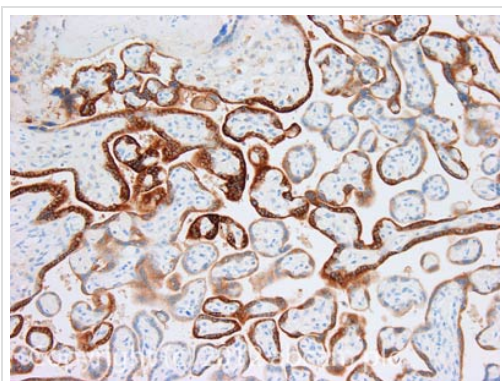
The application notes include recommended starting dilutions; optimal dilutions/concentrations should be determined by the end user.

Application	Abreviews	Notes
ELISA		Use a concentration of 3 - 10 µg/ml.
ICC		Use a concentration of 3 - 10 µg/ml.
IHC-P		Use a concentration of 5 µg/ml.

## Target

<b>Function</b>	Stimulates the ovaries to synthesize the steroids that are essential for the maintenance of pregnancy.
<b>Tissue specificity</b>	Placenta.
<b>Sequence similarities</b>	Belongs to the glycoprotein hormones subunit beta family.
<b>Developmental stage</b>	Made by the first trimester placenta.
<b>Cellular localization</b>	Secreted.

## Images



Immunohistochemistry (Formalin/PFA-fixed paraffin-embedded sections) - Anti-hCG beta antibody [HCG-61] (ab764)

IHC image of hCG beta staining in Human normal placenta formalin fixed paraffin embedded tissue section, performed on a Leica Bond™ system using the standard protocol F. The section was pre-treated using heat mediated antigen retrieval with sodium citrate buffer (pH6, epitope retrieval solution 1) for 20 mins. The section was then incubated with ab764, 5µg/ml, for 15 mins at room temperature and detected using an HRP conjugated compact polymer system. DAB was used as the chromogen. The section was then counterstained with haematoxylin and mounted with DPX. For other IHC staining systems (automated and non-automated) customers should optimize variable parameters such as antigen retrieval conditions, primary antibody concentration and antibody incubation times.

**Please note:** All products are "FOR RESEARCH USE ONLY AND ARE NOT INTENDED FOR DIAGNOSTIC OR THERAPEUTIC USE"

## **Our Abpromise to you: Quality guaranteed and expert technical support**

---

- Replacement or refund for products not performing as stated on the datasheet
- Valid for 12 months from date of delivery
- Response to your inquiry within 24 hours
  
- We provide support in Chinese, English, French, German, Japanese and Spanish
- Extensive multi-media technical resources to help you
- We investigate all quality concerns to ensure our products perform to the highest standards

If the product does not perform as described on this datasheet, we will offer a refund or replacement. For full details of the Abpromise, please visit <http://www.abcam.com/abpromise> or contact our technical team.

## **Terms and conditions**

---

- Guarantee only valid for products bought direct from Abcam or one of our authorized distributors