

Product datasheet

Anti-Fibrillarin antibody ab76660

1 Image

Overview

Product name	Anti-Fibrillarin antibody
Description	Rabbit polyclonal to Fibrillarin
Host species	Rabbit
Tested applications	Suitable for: WB, ELISA
Species reactivity	Reacts with: Human
Immunogen	A KLH conjugated synthetic peptide selected from the center region of human Fibrillarin.
Positive control	K562 cell line lysates

Properties

Form	Liquid
Storage instructions	Shipped at 4°C. Upon delivery aliquot and store at -20°C. Avoid freeze / thaw cycles.
Storage buffer	Preservative: 0.09% Sodium Azide Constituents: PBS
Purity	Ammonium Sulphate Precipitation
Purification notes	This antibody is prepared by Saturated Ammonium Sulfate (SAS) precipitation followed by dialysis against PBS.
Clonality	Polyclonal
Isotype	IgG

Applications

Our [Abpromise guarantee](#) covers the use of **ab76660** in the following tested applications.

The application notes include recommended starting dilutions; optimal dilutions/concentrations should be determined by the end user.

Application	Abreviews	Notes
WB		1/50 - 1/100. Detects a band of approximately 40 kDa (predicted molecular weight: 34 kDa).
ELISA		1/1000.

Target

Function

S-adenosyl-L-methionine-dependent methyltransferase that has the ability to methylate both RNAs and proteins. Involved in pre-rRNA processing by catalyzing the site-specific 2'-hydroxyl methylation of ribose moieties in pre-ribosomal RNA. Site specificity is provided by a guide RNA that base pairs with the substrate. Methylation occurs at a characteristic distance from the sequence involved in base pairing with the guide RNA. Also acts as a protein methyltransferase by mediating methylation of 'Gln-105' of histone H2A (H2AQ104me), a modification that impairs binding of the FACT complex and is specifically present at 35S ribosomal DNA locus (PubMed:24352239).

Sequence similarities

Belongs to the methyltransferase superfamily. Fibrillarin family.

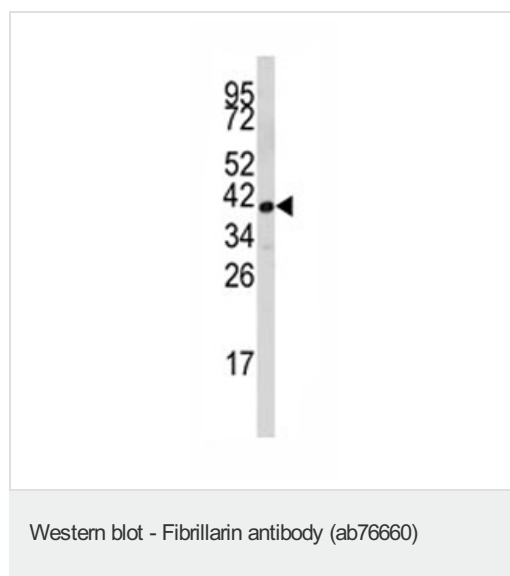
Post-translational modifications

By homology to other fibrillarins, some or all of the N-terminal domain arginines are modified to asymmetric dimethylarginine (DMA).

Cellular localization

Nucleus, nucleolus. Fibrillar region of the nucleolus.

Images



Anti-Fibrillarin antibody (ab76660) at 1/50 dilution + K562 cell line lysates at 35 µg

Predicted band size: 34 kDa

Observed band size: 40 kDa

Please note: All products are "FOR RESEARCH USE ONLY AND ARE NOT INTENDED FOR DIAGNOSTIC OR THERAPEUTIC USE"

Our Abpromise to you: Quality guaranteed and expert technical support

- Replacement or refund for products not performing as stated on the datasheet
- Valid for 12 months from date of delivery
- Response to your inquiry within 24 hours
- We provide support in Chinese, English, French, German, Japanese and Spanish
- Extensive multi-media technical resources to help you
- We investigate all quality concerns to ensure our products perform to the highest standards

If the product does not perform as described on this datasheet, we will offer a refund or replacement. For full details of the Abpromise, please visit <http://www.abcam.com/abpromise> or contact our technical team.

Terms and conditions

- Guarantee only valid for products bought direct from Abcam or one of our authorized distributors