

Product datasheet

Anti-Macrophage inflammatory protein 5 antibody ab77004

[2 Images](#)

Overview

Product name	Anti-Macrophage inflammatory protein 5 antibody
Description	Mouse monoclonal to Macrophage inflammatory protein 5
Host species	Mouse
Tested applications	Suitable for: WB, ELISA
Species reactivity	Reacts with: Human
Immunogen	Recombinant fragment: NDAETELMMS KLPLENPVVL NSFHFAADCC TSYISQSIPC SLMKSYFETS SECSKPGVIF LTKKGRQVCA KPSGPGVQDC MKKLPYSI, corresponding to amino acids 25-113 of Human Macrophage inflammatory protein 5 (NP_116741) with a 26 kDa tag. Run BLAST with ExPASy Run BLAST with NCBI
Positive control	Macrophage inflammatory protein 5 transfected 293T cell lysate. Recombinant tagged human Macrophage inflammatory protein 5 fragment.

Properties

Form	Liquid
Storage instructions	Shipped at 4°C. Upon delivery aliquot and store at -20°C. Avoid repeated freeze / thaw cycles.
Storage buffer	Preservative: None Constituents: 1X PBS, pH 7.2
Purity	Protein A purified
Clonality	Monoclonal
Isotype	IgG2a
Light chain type	kappa

Applications

Our [Abpromise guarantee](#) covers the use of **ab77004** in the following tested applications.

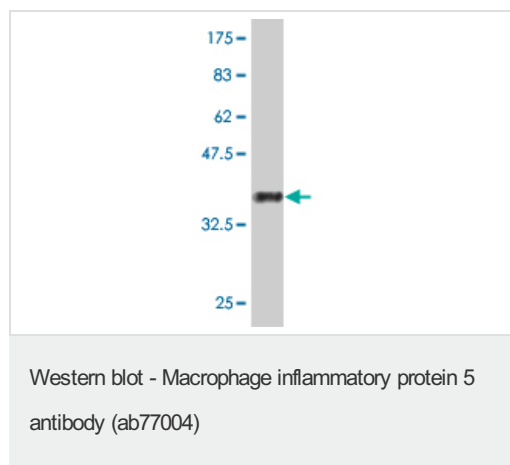
The application notes include recommended starting dilutions; optimal dilutions/concentrations should be determined by the end user.

Application	Abreviews	Notes
WB		Use a concentration of 1 - 5 µg/ml. Predicted molecular weight: 12 kDa.
ELISA		Use at an assay dependent dilution.

Target

Function	Chemotactic factor that attracts T-cells and monocytes, but not neutrophils, eosinophils, or B-cells. Acts mainly via CC chemokine receptor CCR1. Also binds to CCR3. CCL15(22-92), CCL15(25-92) and CCL15(29-92) are more potent chemoattractants than the small-inducible cytokine A15.
Tissue specificity	Most abundant in heart, skeletal muscle and adrenal gland. Lower levels in placenta, liver, pancreas and bone marrow. CCL15(22-92), CCL15(25-92) and CCL15(29-92) are found in high levels in synovial fluids from rheumatoid patients.
Sequence similarities	Belongs to the intercrine beta (chemokine CC) family.
Cellular localization	Secreted.

Images



Anti-Macrophage inflammatory protein 5 antibody (ab77004) at 5 µg/ml + Recombinant tagged human Macrophage inflammatory protein 5 fragment (the immunogen) at 0.2 µg

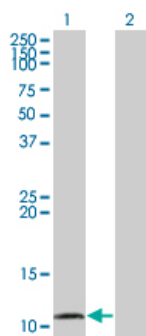
Secondary

Goat Anti-Mouse IgG (H&L)-HRP Conjugate at 1/5000 dilution

Predicted band size: 12 kDa

Observed band size: 36 kDa

Note: Molecular weight of the tag alone is 26 kDa.



Western blot - Macrophage inflammatory protein 5 antibody (ab77004)

All lanes : Anti-Macrophage inflammatory protein 5 antibody (ab77004) at 5 µg/ml

Lane 1 : Macrophage inflammatory protein 5 transfected 293T cell lysate

Lane 2 : Non transfected 293T cell lysate

Lysates/proteins at 25 µg per lane.

Secondary

All lanes : Goat Anti-Mouse IgG (H&L)-HRP
Conjugate at 1/2500 dilution

Predicted band size: 12 kDa

Observed band size: 12 kDa

Please note: All products are "FOR RESEARCH USE ONLY AND ARE NOT INTENDED FOR DIAGNOSTIC OR THERAPEUTIC USE"

Our Abpromise to you: Quality guaranteed and expert technical support

- Replacement or refund for products not performing as stated on the datasheet
- Valid for 12 months from date of delivery
- Response to your inquiry within 24 hours
- We provide support in Chinese, English, French, German, Japanese and Spanish
- Extensive multi-media technical resources to help you
- We investigate all quality concerns to ensure our products perform to the highest standards

If the product does not perform as described on this datasheet, we will offer a refund or replacement. For full details of the Abpromise, please visit <http://www.abcam.com/abpromise> or contact our technical team.

Terms and conditions

- Guarantee only valid for products bought direct from Abcam or one of our authorized distributors