


## Product datasheet

# Anti-DHRS2 antibody ab77107

1 Image

### Overview

|                            |   |
|----------------------------|---|
| <b>Product name</b>        | Anti-DHRS2 antibody   |
| <b>Description</b>         | Mouse monoclonal to DHRS2   |
| <b>Host species</b>        | Mouse   |
| <b>Tested applications</b> | <b>Suitable for:</b> WB, ELISA  |
| <b>Species reactivity</b>  | <b>Reacts with:</b> Recombinant fragment<br><b>Predicted to work with:</b> Human   |
| <b>Immunogen</b>           | Recombinant fragment: GFMGMSLSGR TSRNIISCRG LGSQRTVQES CPSCALQMPA TSTGRTLWQ ATPLGSERSG GGCVAVVP GP GA, corresponding to amino acids 229-301 of Human DHRS2 (NP_878912) with tag.<br><a href="#">Run BLAST with ExPASy</a> <a href="#">Run BLAST with NCBI</a> |
| <b>Positive control</b>    | Recombinant tagged human DHRS2 fragment.  |

### Properties

|                             |  |
|-----------------------------|--|
| <b>Form</b>                 | Liquid   |
| <b>Storage instructions</b> | Shipped at 4°C. Upon delivery aliquot. Store at -20°C or -80°C. Avoid freeze / thaw cycle. |
| <b>Storage buffer</b>       | Preservative: None<br>Constituents: 1X PBS, pH 7.2   |
| <b>Purity</b>               | Protein A purified   |
| <b>Clonality</b>            | Monoclonal   |
| <b>Isotype</b>              | IgG2a  |
| <b>Light chain type</b>     | kappa  |

### Applications

Our [Abpromise guarantee](#) covers the use of **ab77107** in the following tested applications.

The application notes include recommended starting dilutions; optimal dilutions/concentrations should be determined by the end user.

| Application | Abreviews | Notes |
|-------------|-----------|-------|
| WB          |           |       |
| ELISA       |           |       |

### Application notes

ELISA: Use at an assay dependent dilution.

WB: Use at a concentration of 1 - 5 µg/ml. Predicted molecular weight: 27 kDa.

This antibody has only been tested in WB against the recombinant fragment used as immunogen. We have no data on the detection of endogenous protein.

Not yet tested in other applications.

Optimal dilutions/concentrations should be determined by the end user.

### Target

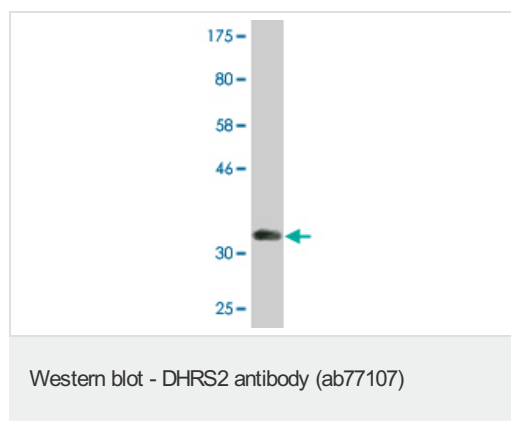
#### Relevance

DHRS2 belongs to the short-chain dehydrogenases/reductases (SDR) family. It may inhibit cell replication either by catalyzing the oxidation of estrogen and androgen or by converting cortisone in cortisol.

#### Cellular localization

Mitochondrion matrix. Nucleus. Note: A minor fraction of the protein is translocated from the mitochondria to the nucleus, after cleavage of the targeting signal.

### Images



Anti-DHRS2 antibody (ab77107) at 1 µg/ml +  
Recombinant tagged human DHRS2 fragment  
at 0.2 µg

#### Secondary

Goat anti-Mouse IgG (H&L)-HRP at 1/5000  
dilution

**Predicted band size:** 27 kDa

**Observed band size:** 34 kDa

Western blot against tagged recombinant  
protein immunogen. Predicted band size of  
immunogen is 34 kDa.

**Please note:** All products are "FOR RESEARCH USE ONLY AND ARE NOT INTENDED FOR DIAGNOSTIC OR THERAPEUTIC USE"

## **Our Abpromise to you: Quality guaranteed and expert technical support**

---

- Replacement or refund for products not performing as stated on the datasheet
- Valid for 12 months from date of delivery
- Response to your inquiry within 24 hours
  
- We provide support in Chinese, English, French, German, Japanese and Spanish
- Extensive multi-media technical resources to help you
- We investigate all quality concerns to ensure our products perform to the highest standards

If the product does not perform as described on this datasheet, we will offer a refund or replacement. For full details of the Abpromise, please visit <http://www.abcam.com/abpromise> or contact our technical team.

## **Terms and conditions**

---

- Guarantee only valid for products bought direct from Abcam or one of our authorized distributors