

Product datasheet

Anti-Acetylcholinesterase antibody [AE-2] ab77959

[1 Abreviews](#) [1 Image](#)

Overview

| | |
|----------------------------|---|
| Product name | Anti-Acetylcholinesterase antibody [AE-2] |
| Description | Mouse monoclonal [AE-2] to Acetylcholinesterase |
| Tested applications | Suitable for: Flow Cyt, WB, IP, IHC-FoFr |
| Species reactivity | Reacts with: Rat, Human, Monkey |
| Immunogen | Full length native Acetylcholinesterase protein (purified from Human erythrocyte) |
| Positive control | SKBR-3 cell lysate. |

Properties

| | |
|-----------------------------|--|
| Form | Liquid |
| Storage instructions | Shipped at 4°C. Upon delivery aliquot and store at -20°C. Avoid freeze / thaw cycles. |
| Storage buffer | Preservative: 0.1% Sodium Azide Constituents: Ascites, 0.25M Sodium chloride, 0.02M PBS, pH 7.2 |
| Purity | Ascites |
| Clonality | Monoclonal |
| Clone number | AE-2 |
| Isotype | IgG1 |

Applications

Our [Abpromise guarantee](#) covers the use of **ab77959** in the following tested applications.

The application notes include recommended starting dilutions; optimal dilutions/concentrations should be determined by the end user.

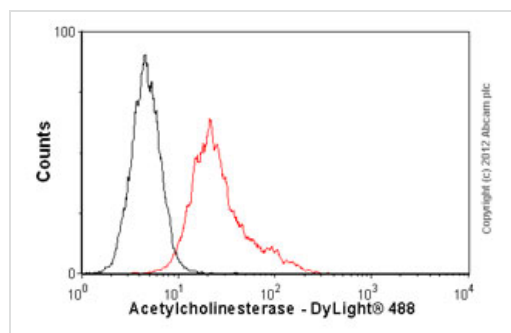
| Application | Abreviews | Notes |
|-------------|-----------|---|
| Flow Cyt | | 1/100. ab170190 -Mouse monoclonal IgG1, is suitable for use as an isotype control with this antibody. |
| WB | | 1/500 - 1/1000. Predicted molecular weight: 68 kDa. |
| IP | | Use at an assay dependent concentration. |

| Application | Abreviews | Notes |
|-------------|-----------|---|
| IHC-FoFr | | 1/200 - 1/1000. Does not react with fixed tissue; add antibody to perfused but unfixed tissue, then fix after primary incubation. |

Target

| | |
|------------------------------|---|
| Function | Terminates signal transduction at the neuromuscular junction by rapid hydrolysis of the acetylcholine released into the synaptic cleft. Role in neuronal apoptosis. |
| Tissue specificity | Isoform H is highly expressed in erythrocytes. |
| Sequence similarities | Belongs to the type-B carboxylesterase/lipase family. |
| Cellular localization | Cell membrane; Cell junction > synapse. Secreted. Cell membrane and Nucleus. Only observed in apoptotic nuclei. |

Images



Flow Cytometry-Anti-Acetylcholinesterase antibody [AE-2](ab77959)

Overlay histogram showing HeLa cells stained with ab77959 (red line). The cells were fixed with 80% methanol (5 min) and then permeabilized with 0.1% PBS-Tween for 20 min. The cells were then incubated in 1x PBS / 10% normal goat serum / 0.3M glycine to block non-specific protein-protein interactions followed by the antibody (ab77959, 1/100 dilution) for 30 min at 22°C. The secondary antibody used was DyLight® 488 goat anti-mouse IgG (H+L) (ab96879) at 1/500 dilution for 30 min at 22°C. Isotype control antibody (black line) was mouse IgG1 [ICIGG1] (ab91353, 2µg/1x10⁶ cells) used under the same conditions. Acquisition of >5,000 events was performed.

Please note: All products are "FOR RESEARCH USE ONLY AND ARE NOT INTENDED FOR DIAGNOSTIC OR THERAPEUTIC USE"

Our Abpromise to you: Quality guaranteed and expert technical support

- Replacement or refund for products not performing as stated on the datasheet
- Valid for 12 months from date of delivery
- Response to your inquiry within 24 hours
- We provide support in Chinese, English, French, German, Japanese and Spanish

- Extensive multi-media technical resources to help you
- We investigate all quality concerns to ensure our products perform to the highest standards

If the product does not perform as described on this datasheet, we will offer a refund or replacement. For full details of the Abpromise, please visit <http://www.abcam.com/abpromise> or contact our technical team.

Terms and conditions

- Guarantee only valid for products bought direct from Abcam or one of our authorized distributors