


Product datasheet

Anti-ATF1 antibody ab78903

2 Images

Overview

Product name	Anti-ATF1 antibody
Description	Rabbit polyclonal to ATF1
Host species	Rabbit
Specificity	Detects endogenous levels of total ATF1 protein.
Tested applications	Suitable for: ELISA, WB, IHC-P
Species reactivity	Reacts with: Human Predicted to work with: Mouse 
Immunogen	Synthetic non-phosphopeptide derived from human ATF1 around the phosphorylation site of serine 63 (R-P-S ^P -Y-R)
Positive control	Human lung carcinoma tissue COLO cell extract

Properties

Form	Liquid
Storage instructions	Shipped at 4°C. Upon delivery aliquot and store at -20°C. Avoid freeze / thaw cycles.
Storage buffer	Preservative: 0.02% Sodium Azide Constituents: 50% Glycerol, PBS (without Mg ²⁺ and Ca ²⁺), 150mM Sodium chloride, pH 7.4
Purity	Immunogen affinity purified
Purification notes	Affinity-purified from rabbit antiserum by affinity-chromatography using epitope-specific immunogen.
Clonality	Polyclonal
Isotype	IgG

Applications

Our [Abpromise guarantee](#) covers the use of **ab78903** in the following tested applications.

The application notes include recommended starting dilutions; optimal dilutions/concentrations should be determined by the end user.

Application	Abreviews	Notes
ELISA		1/5000.
WB		1/500 - 1/1000. Predicted molecular weight: 29 kDa.
IHC-P		1/50 - 1/100.

Target

Function

This protein binds the cAMP response element (CRE) (consensus: 5'-GTGACGT[AC][AG]-3'), a sequence present in many viral and cellular promoters. Binds to the Tax-responsive element (TRE) of HTLV-I. Mediates PKA-induced stimulation of CRE-reporter genes.

Involvement in disease

Defects in ATF1 may be a cause of angiomatoid fibrous histiocytoma (AFH) [MIM:612160]. A distinct variant of malignant fibrous histiocytoma that typically occurs in children and adolescents and is manifest by nodular subcutaneous growth. Characteristic microscopic features include lobulated sheets of histiocyte-like cells intimately associated with areas of hemorrhage and cystic pseudovascular spaces, as well as a striking cuffing of inflammatory cells, mimicking a lymph node metastasis. Note=Chromosomal aberrations involving ATF1 are found in patients with angiomatoid fibrous histiocytoma. Translocation t(12;16)(q13;p11.2) with FUS generates a chimeric ATF1/FUS protein. Translocation t(12;22)(q13;q12) with EWSR1 generates a chimeric ATF1/EWSR1 protein.

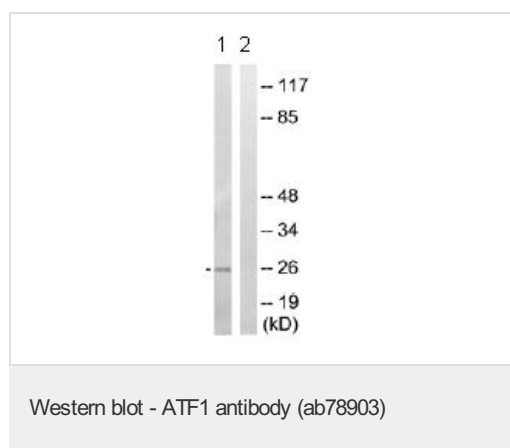
Sequence similarities

Belongs to the bZIP family. ATF subfamily.
Contains 1 bZIP domain.
Contains 1 KID (kinase-inducible) domain.

Cellular localization

Nucleus.

Images



All lanes : Anti-ATF1 antibody (ab78903) at 1/500 dilution

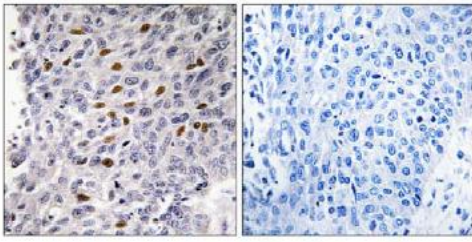
Lane 1 : COLO cell extract

Lane 2 : COLO cell extract with immunising peptide at 10 µg

Lysates/proteins at 30 µg per lane.

Predicted band size: 29 kDa

Observed band size: 26 kDa



Peptide - +

Immunohistochemistry (Formalin/PFA-fixed paraffin-embedded sections) - ATF1 antibody (ab78903)

Immunohistochemistry analysis of paraffin-embedded human lung carcinoma tissue using ab78903, at 1/50 dilution. Right panel was also treated with immunising peptide.

Please note: All products are "FOR RESEARCH USE ONLY AND ARE NOT INTENDED FOR DIAGNOSTIC OR THERAPEUTIC USE"

Our Abpromise to you: Quality guaranteed and expert technical support

- Replacement or refund for products not performing as stated on the datasheet
- Valid for 12 months from date of delivery
- Response to your inquiry within 24 hours
- We provide support in Chinese, English, French, German, Japanese and Spanish
- Extensive multi-media technical resources to help you
- We investigate all quality concerns to ensure our products perform to the highest standards

If the product does not perform as described on this datasheet, we will offer a refund or replacement. For full details of the Abpromise, please visit <http://www.abcam.com/abpromise> or contact our technical team.

Terms and conditions

- Guarantee only valid for products bought direct from Abcam or one of our authorized distributors