

Product datasheet

Anti-Integrin alpha 1 + beta 1 antibody [RA1.1]  
ab79007

2 Images

Overview

<b>Product name</b>	Anti-Integrin alpha 1 + beta 1 antibody [RA1.1]
<b>Description</b>	Mouse monoclonal [RA1.1] to Integrin alpha 1 + beta 1
<b>Host species</b>	Mouse
<b>Specificity</b>	Specifically binds Rat integrin alpha 1 + beta 1 (VLA-1 complex), will not recognize the individual integrin subunits. Does not inhibit VLA-1 mediated adhesion to matrix proteins.
<b>Tested applications</b>	<b>Suitable for:</b> IP, IHC-Fr, Flow Cyt <b>Unsuitable for:</b> WB
<b>Species reactivity</b>	<b>Reacts with:</b> Rat
<b>Immunogen</b>	Rat pheochromocytoma PC12 cells.
<b>Positive control</b>	Rat gut, heart and lung tissue.

Properties

<b>Form</b>	Liquid
<b>Storage instructions</b>	Shipped at 4°C. Upon delivery aliquot and store at -20°C or -80°C. Avoid repeated freeze / thaw cycles.
<b>Storage buffer</b>	Preservative: 0.1% Sodium Azide Constituents: 0.25M Sodium chloride, 0.02M PBS, pH 7.6
<b>Purity</b>	Protein A purified
<b>Clonality</b>	Monoclonal
<b>Clone number</b>	RA1.1
<b>Myeloma</b>	P3x63-Ag8.653
<b>Isotype</b>	IgG2a
<b>Light chain type</b>	kappa

Applications

Our [Abpromise guarantee](#) covers the use of **ab79007** in the following tested applications.

The application notes include recommended starting dilutions; optimal dilutions/concentrations should be determined by the end user.

Application	Abreviews	Notes
IP		
IHC-Fr		
Flow Cyt		

**Application notes**

Flow Cyt: Use at a concentration of 10 µg/ml.  
IHC-Fr: Use at a concentration of 20 µg/ml. Acetone fixation recommended.  
IP from detergent cell lysates: Use 2µg for 10<sup>6</sup> cell equivalent.

Is unsuitable for WB.

Not yet tested in other applications.  
Optimal dilutions/concentrations should be determined by the end user.

**Target**

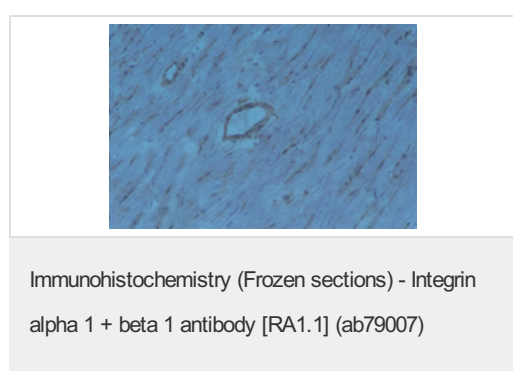
**Relevance**

Integrins are heterodimeric proteins made up of alpha and beta subunits. At least 18 alpha and 8 beta subunits have been described in mammals. Integrin family members are membrane receptors involved in cell adhesion and recognition in a variety of processes including embryogenesis, hemostasis, tissue repair, immune response and metastatic diffusion of tumor cells. Integrin alpha 1 heterodimerizes with Integrin beta 1 to form a cell-surface receptor for collagen and laminin. It recognizes the proline-hydroxylated sequence G-F-P-G-E-R in collagen. The heterodimeric receptor is involved in cell-cell adhesion and may play a role in inflammation and fibrosis.

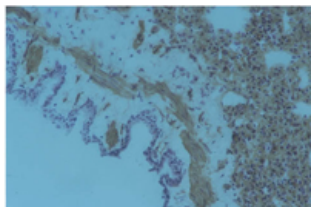
**Cellular localization**

Cell membrane; Single-pass type I membrane protein.

**Images**



ab79007, at 20µg/ml, staining Integrin alpha 1 + beta 1 in rat heart tissue by immunohistochemistry using acetone fixed frozen tissue sections.



ab79007, at 20µg/ml, staining Integrin alpha 1 + beta 1 in rat lung tissue by immunohistochemistry using acetone fixed frozen tissue sections.

Immunohistochemistry (Frozen sections) - Integrin alpha 1 + beta 1 antibody [RA1.1] (ab79007)

**Please note:** All products are "FOR RESEARCH USE ONLY AND ARE NOT INTENDED FOR DIAGNOSTIC OR THERAPEUTIC USE"

### Our Abpromise to you: Quality guaranteed and expert technical support

---

- Replacement or refund for products not performing as stated on the datasheet
- Valid for 12 months from date of delivery
- Response to your inquiry within 24 hours
- We provide support in Chinese, English, French, German, Japanese and Spanish
- Extensive multi-media technical resources to help you
- We investigate all quality concerns to ensure our products perform to the highest standards

If the product does not perform as described on this datasheet, we will offer a refund or replacement. For full details of the Abpromise, please visit <http://www.abcam.com/abpromise> or contact our technical team.

### Terms and conditions

---

- Guarantee only valid for products bought direct from Abcam or one of our authorized distributors