

Product datasheet

Anti-S100A11 antibody ab79845

1 Image

Overview

Product name	Anti-S100A11 antibody
Description	Rabbit polyclonal to S100A11
Host species	Rabbit
Tested applications	Suitable for: ELISA, WB
Species reactivity	Reacts with: Human
Immunogen	KLH-conjugated synthetic peptide corresponding to amino acid residues surrounding Y32 of Human S100A11
Positive control	Sk-BR-3 cell line lysates.

Properties

Form	Liquid
Storage instructions	Shipped at 4°C. Upon delivery aliquot and store at -20°C or -80°C. Avoid repeated freeze / thaw cycles.
Storage buffer	Preservative: 0.09% Sodium Azide Constituents: PBS
Purity	Immunogen affinity purified
Purification notes	Purified through a protein A column, followed by peptide affinity purification.
Clonality	Polyclonal
Isotype	IgG

Applications

Our [Abpromise guarantee](#) covers the use of **ab79845** in the following tested applications.

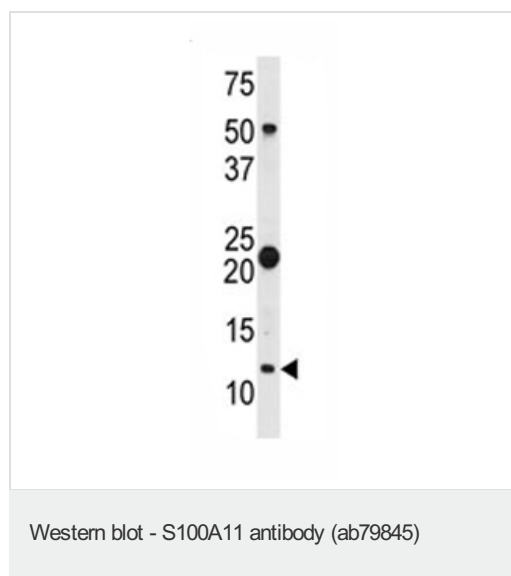
The application notes include recommended starting dilutions; optimal dilutions/concentrations should be determined by the end user.

Application	Abreviews	Notes
ELISA		1/1000.
WB		1/50 - 1/100. Predicted molecular weight: 13 kDa.

Target

Function	Facilitates the differentiation and the cornification of keratinocytes.
Sequence similarities	Belongs to the S-100 family. Contains 2 EF-hand domains.
Post-translational modifications	Phosphorylation at Thr-10 by PRKCA significantly suppresses homodimerization and promotes association with NCL/nucleolin which induces nuclear translocation.
Cellular localization	Cytoplasm. Nucleus.

Images



Anti-S100A11 antibody (ab79845) at 1/50 dilution + Sk-BR-3 cell line lysates at 35 µg

Predicted band size: 13 kDa

Observed band size: 13 kDa

Additional bands at: 22 kDa, 50 kDa. We are unsure as to the identity of these extra bands.

Please note: All products are "FOR RESEARCH USE ONLY AND ARE NOT INTENDED FOR DIAGNOSTIC OR THERAPEUTIC USE"

Our Abpromise to you: Quality guaranteed and expert technical support

- Replacement or refund for products not performing as stated on the datasheet
- Valid for 12 months from date of delivery
- Response to your inquiry within 24 hours
- We provide support in Chinese, English, French, German, Japanese and Spanish
- Extensive multi-media technical resources to help you
- We investigate all quality concerns to ensure our products perform to the highest standards

If the product does not perform as described on this datasheet, we will offer a refund or replacement. For full details of the Abpromise, please visit <http://www.abcam.com/abpromise> or contact our technical team.

Terms and conditions

- Guarantee only valid for products bought direct from Abcam or one of our authorized distributors