

Product datasheet

Anti-DUSP21 antibody ab80100

[1 References](#) [1 Image](#)

Overview

Product name	Anti-DUSP21 antibody
Description	Rabbit polyclonal to DUSP21
Host species	Rabbit
Tested applications	Suitable for: WB, ELISA
Species reactivity	Reacts with: Human
Immunogen	KLH conjugated synthetic peptide selected from the center region of human DUSP21.
Positive control	NCI-H460 cell line lysate

Properties

Form	Liquid
Storage instructions	Shipped at 4°C. Upon delivery aliquot and store at -20°C. Avoid freeze / thaw cycles.
Storage buffer	Preservative: 0.09% Sodium Azide Constituents: PBS
Purity	Ammonium Sulphate Precipitation
Purification notes	This antibody is prepared by Saturated Ammonium Sulfate precipitation followed by dialysis against PBS.
Clonality	Polyclonal
Isotype	IgG

Applications

Our [Abpromise guarantee](#) covers the use of **ab80100** in the following tested applications.

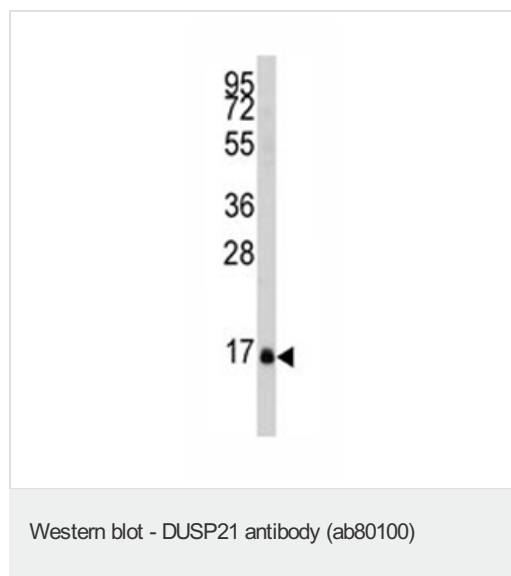
The application notes include recommended starting dilutions; optimal dilutions/concentrations should be determined by the end user.

Application	Abreviews	Notes
WB		1/50 - 1/100. Predicted molecular weight: 22 kDa.
ELISA		1/1000.

Target

Function	Can dephosphorylate single and diphosphorylated synthetic MAPK peptides, with preference for the phosphotyrosine and diphosphorylated forms over phosphothreonine.
Tissue specificity	Expressed in testis.
Sequence similarities	Belongs to the protein-tyrosine phosphatase family. Non-receptor class dual specificity subfamily. Contains 1 tyrosine-protein phosphatase domain.
Cellular localization	Cytoplasm. Nucleus.

Images



Anti-DUSP21 antibody (ab80100) at 1/50 dilution + NCI-H460 cell line lysates at 35 µg

Predicted band size: 22 kDa

Observed band size: 17 kDa

Please note: All products are "FOR RESEARCH USE ONLY AND ARE NOT INTENDED FOR DIAGNOSTIC OR THERAPEUTIC USE"

Our Abpromise to you: Quality guaranteed and expert technical support

- Replacement or refund for products not performing as stated on the datasheet
- Valid for 12 months from date of delivery
- Response to your inquiry within 24 hours
- We provide support in Chinese, English, French, German, Japanese and Spanish
- Extensive multi-media technical resources to help you
- We investigate all quality concerns to ensure our products perform to the highest standards

If the product does not perform as described on this datasheet, we will offer a refund or replacement. For full details of the Abpromise, please visit <http://www.abcam.com/abpromise> or contact our technical team.

Terms and conditions

- Guarantee only valid for products bought direct from Abcam or one of our authorized distributors