

## Product datasheet

# Anti-FBXO21 antibody ab80433

[2 Images](#)

### Overview

<b>Product name</b>	Anti-FBXO21 antibody
<b>Description</b>	Rabbit polyclonal to FBXO21
<b>Host species</b>	Rabbit
<b>Tested applications</b>	<b>Suitable for:</b> IHC-P, WB
<b>Species reactivity</b>	<b>Reacts with:</b> Human <b>Predicted to work with:</b> Mouse, Rat, Rabbit, Guinea pig, Cow, Cat, Dog, Saccharomyces cerevisiae, Common marmoset
<b>Immunogen</b>	Synthetic peptide: VWKEQFRVRW PSLMKHYSPT DYVNWLEEYK VRQKAGLEAR KVASFSKRF , corresponding to N terminal amino acids 72-121 of Human FBXO21 <a href="#">Run BLAST with ExPASy</a> <a href="#">Run BLAST with NCBI</a>
<b>Positive control</b>	293T cell lysate

### Properties

<b>Form</b>	Liquid
<b>Storage instructions</b>	Shipped at 4°C. Upon delivery aliquot and store at -20°C. Avoid repeated freeze / thaw cycles.
<b>Storage buffer</b>	Preservative: None Constituents: 2% Sucrose, PBS
<b>Purity</b>	Immunogen affinity purified
<b>Clonality</b>	Polyclonal
<b>Isotype</b>	IgG

### Applications

Our [Abpromise guarantee](#) covers the use of **ab80433** in the following tested applications.

The application notes include recommended starting dilutions; optimal dilutions/concentrations should be determined by the end user.

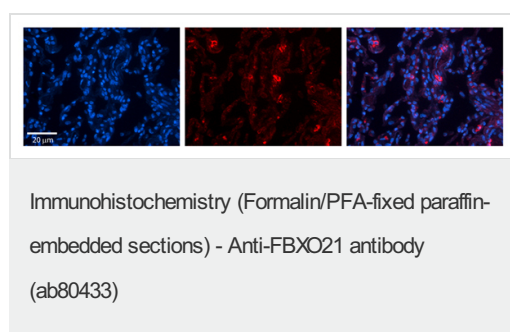
Application	Abreviews	Notes
IHC-P		1/100.

Application	Abreviews	Notes
WB		Use a concentration of 1 µg/ml. Predicted molecular weight: 71 kDa. Good results were obtained when blocked with 5% non-fat dry milk in 0.05% PBS-T.

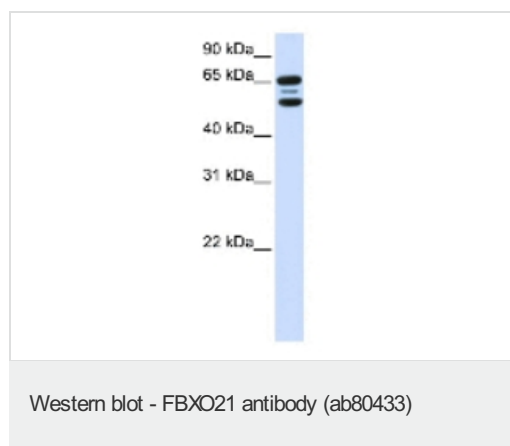
## Target

<b>Function</b>	Substrate-recognition component of the SCF (SKP1-CUL1-F-box protein)-type E3 ubiquitin ligase complex.
<b>Sequence similarities</b>	Contains 1 F-box domain.

## Images



Immunohistochemistry (Formalin/PFA-fixed paraffin-embedded sections) analysis of human lung tissue labelling FBXO21 with ab80433 at 1/100. A Cy3-conjugated donkey anti-rabbit IgG (1/200) was used as the secondary antibody. Positive staining shown in the membrane and cytoplasm of alveolar type I cells. Magnification: 20X. Exposure time: 0.5 - 2.0 seconds. Left - DAPI. Middle - FBXO21. Right - Merge.



Anti-FBXO21 antibody (ab80433) at 1 µg/ml + 293T cell lysate at 10 µg

### Secondary

HRP conjugated anti-Rabbit IgG at 1/50000 dilution

**Predicted band size:** 71 kDa

**Observed band size:** 71 kDa

**Additional bands at:** 55 kDa. We are unsure as to the identity of these extra bands.

**Please note:** All products are "FOR RESEARCH USE ONLY AND ARE NOT INTENDED FOR DIAGNOSTIC OR THERAPEUTIC USE"

## Our Promise to you: Quality guaranteed and expert technical support

- Replacement or refund for products not performing as stated on the datasheet

- Valid for 12 months from date of delivery
- Response to your inquiry within 24 hours
  
- We provide support in Chinese, English, French, German, Japanese and Spanish
- Extensive multi-media technical resources to help you
- We investigate all quality concerns to ensure our products perform to the highest standards

If the product does not perform as described on this datasheet, we will offer a refund or replacement. For full details of the Abpromise, please visit <http://www.abcam.com/abpromise> or contact our technical team.

### **Terms and conditions**

---

- Guarantee only valid for products bought direct from Abcam or one of our authorized distributors