

## Product datasheet

# Anti-MMP2 antibody [VB3] ab80738

★★★★☆ 1 Abreviews 3 References 2 Images

### Overview

---

<b>Product name</b>	Anti-MMP2 antibody [VB3]
<b>Description</b>	Mouse monoclonal [VB3] to MMP2
<b>Specificity</b>	This antibody recognizes pro and active forms of MMP2.
<b>Tested applications</b>	<b>Suitable for:</b> WB, IP, ICC/IF <b>Unsuitable for:</b> IHC-P
<b>Species reactivity</b>	<b>Reacts with:</b> Human
<b>Immunogen</b>	Full length native MMP2 protein (purified) (Human)
<b>Positive control</b>	Conditioned, serum-free medium from (TPA-treated) HFL-1 cells.

### Properties

---

<b>Form</b>	Liquid
<b>Storage instructions</b>	Shipped at 4°C. Upon delivery aliquot and store at -20°C or -80°C. Avoid repeated freeze / thaw cycles.
<b>Storage buffer</b>	Preservative: None Constituents: 10mM PBS, pH 7.4
<b>Purity</b>	Protein G purified
<b>Purification notes</b>	Purified from ascites fluid by Protein G chromatography.
<b>Clonality</b>	Monoclonal
<b>Clone number</b>	VB3
<b>Isotype</b>	IgG1
<b>Light chain type</b>	kappa

### Applications

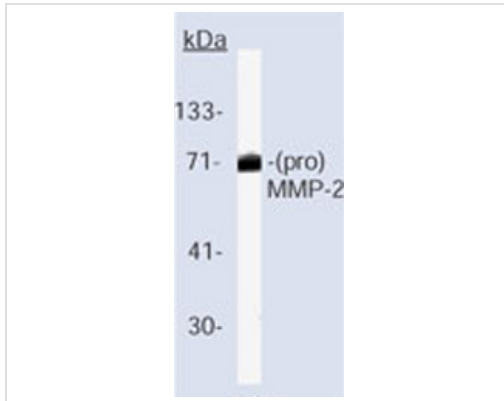
---

Our [Abpromise guarantee](#) covers the use of **ab80738** in the following tested applications.

The application notes include recommended starting dilutions; optimal dilutions/concentrations should be determined by the end user.

Application	Abreviews	Notes
WB	★★★★☆	Use a concentration of 1 - 2 µg/ml. Detects a band of approximately 72 kDa (predicted molecular weight: 74 kDa).
IP		Use at 2 µg/mg of lysate.
ICC/IF		Use at an assay dependent dilution.
<b>Application notes</b>		Is unsuitable for IHC-P.
<b>Target</b>		
<b>Function</b>	<p>Ubiquitous metalloproteinase that is involved in diverse functions such as remodeling of the vasculature, angiogenesis, tissue repair, tumor invasion, inflammation, and atherosclerotic plaque rupture. As well as degrading extracellular matrix proteins, can also act on several nonmatrix proteins such as big endothelial 1 and beta-type CGRP promoting vasoconstriction. Also cleaves KISS at a Gly-Leu bond. Appears to have a role in myocardial cell death pathways. Contributes to myocardial oxidative stress by regulating the activity of GSK3beta. Cleaves GSK3beta in vitro. PEX, the C-terminal non-catalytic fragment of MMP2, possesses anti-angiogenic and anti-tumor properties and inhibits cell migration and cell adhesion to FGF2 and vitronectin. Ligand for integrin<math>\alpha</math>/beta3 on the surface of blood vessels.</p>	
<b>Tissue specificity</b>	Produced by normal skin fibroblasts. PEX is expressed in a number of tumors including gliomas, breast and prostate.	
<b>Involvement in disease</b>	Defects in MMP2 are the cause of Torg-Winchester syndrome (TWS) [MIM:259600]; also known as multicentric osteolysis nodulosis and arthropathy (MONA). TWS is an autosomal recessive osteolysis syndrome. It is severe with generalized osteolysis and osteopenia. Subcutaneous nodules are usually absent. Torg-Winchester syndrome has been associated with a number of additional features including coarse face, corneal opacities, patches of thickened, hyperpigmented skin, hypertrichosis and gum hypertrophy. However, these features are not always present and have occasionally been observed in other osteolysis syndromes.	
<b>Sequence similarities</b>	<p>Belongs to the peptidase M10A family.</p> <p>Contains 3 fibronectin type-II domains.</p> <p>Contains 4 hemopexin-like domains.</p>	
<b>Domain</b>	The conserved cysteine present in the cysteine-switch motif binds the catalytic zinc ion, thus inhibiting the enzyme. The dissociation of the cysteine from the zinc ion upon the activation-peptide release activates the enzyme.	
<b>Post-translational modifications</b>	Phosphorylation on multiple sites modulates enzymatic activity. Phosphorylated by PKC in vitro. The propeptide is processed by MMP14 (MT-MMP1) and MMP16 (MT-MMP3). Autocatalytic cleavage in the C-terminal produces the anti-angiogenic peptide, PEX. This processing appears to be facilitated by binding integrin $\alpha$ /beta3.	
<b>Cellular localization</b>	Secreted > extracellular space > extracellular matrix. Membrane. Nucleus. Colocalizes with integrin $\alpha$ V/beta3 at the membrane surface in angiogenic blood vessels and melanomas. Found in mitochondria, along microfibrils, and in nuclei of cardiomyocytes.	

## Images

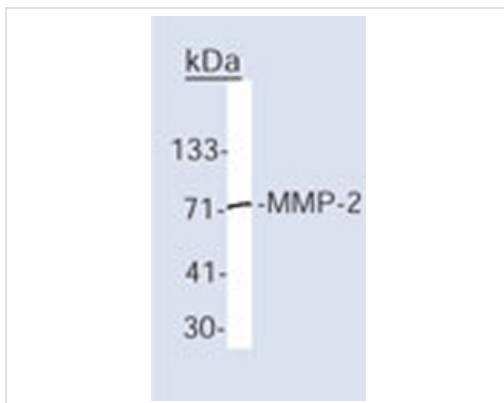


Western blot - MMP2 antibody [VB3] - BSA and Azide free (ab80738)

Anti-MMP2 antibody [VB3] (ab80738) at 2 µg/ml + human cells

**Predicted band size :** 74 kDa

**Observed band size :** 72 kDa



Immunoprecipitation - MMP2 antibody [VB3] - BSA and Azide free (ab80738)

Native IP using Human cells and ab80738 at 2 µg/mg lysate.

**Please note:** All products are "FOR RESEARCH USE ONLY AND ARE NOT INTENDED FOR DIAGNOSTIC OR THERAPEUTIC USE"

### Our Abpromise to you: Quality guaranteed and expert technical support

- Replacement or refund for products not performing as stated on the datasheet
- Valid for 12 months from date of delivery
- Response to your inquiry within 24 hours
- We provide support in Chinese, English, French, German, Japanese and Spanish
- Extensive multi-media technical resources to help you
- We investigate all quality concerns to ensure our products perform to the highest standards

If the product does not perform as described on this datasheet, we will offer a refund or replacement. For full details of the Abpromise, please visit <http://www.abcam.com/abpromise> or contact our technical team.

### Terms and conditions

- Guarantee only valid for products bought direct from Abcam or one of our authorized distributors