

Product datasheet

Anti-Shigella dysenteriae antibody [6] ab80912

1 Image

Overview

|                            |   |
|----------------------------|---|
| <b>Product name</b>        | Anti-Shigella dysenteriae antibody [6]  |
| <b>Description</b>         | Mouse monoclonal [6] to Shigella dysenteriae  |
| <b>Specificity</b>         | Recognizes recombinant Shigella dysenteriae IpaA protein  |
| <b>Tested applications</b> | <b>Suitable for:</b> WB, ELISA  |
| <b>Species reactivity</b>  | <b>Reacts with:</b> Recombinant fragment  |
| <b>Immunogen</b>           | E.coli expressed recombinant protein corresponding to fragment (aa 373-581) of Shigella dysenteriae IpaA (Q326T2) |
| <b>Positive control</b>    | Shigella dysenteriae IpaA protein   |

Properties

|                             |   |
|-----------------------------|---|
| <b>Form</b>                 | Liquid  |
| <b>Storage instructions</b> | Shipped at 4°C. Upon delivery aliquot and store at -20°C or -80°C. Avoid repeated freeze / thaw cycles. |
| <b>Storage buffer</b>       | Preservative: 0.02% Proclin 300<br>Constituents: Tris glycine, pH 7.0                                   |
| <b>Purity</b>               | Protein G purified  |
| <b>Clonality</b>            | Monoclonal  |
| <b>Clone number</b>         | 6   |
| <b>Isotype</b>              | IgG1  |

Applications

Our [Abpromise guarantee](#) covers the use of **ab80912** in the following tested applications.

The application notes include recommended starting dilutions; optimal dilutions/concentrations should be determined by the end user.

| Application | Abreviews | Notes |
|-------------|-----------|-------|
| WB          |           |       |
| ELISA       |           |       |

## Application notes

ELISA: Use at an assay dependent dilution.  
WB: 1/1000. Predicted molecular weight: 70 kDa.

This antibody has only been tested against the recombinant fragment. It has not been tested against the endogenous protein.

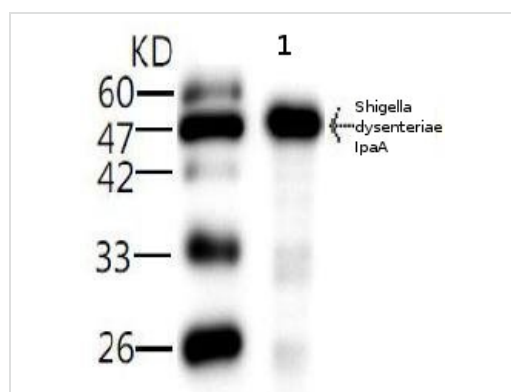
Not yet tested in other applications.  
Optimal dilutions/concentrations should be determined by the end user.

## Target

### Relevance

*Shigella dysenteriae* is a facultative anaerobic, Gram-negative rod from the family Enterobacteriaceae. *S. dysenteriae* is primarily a human pathogen, as are all Shigellae. The disease has infected masses, particularly in close living quarters, such as refugee camps. *S. dysenteriae* type 1 (Sd1) is the only cause of epidemic dysentery. The Shiga bacillus is the most virulent of the four serogroups of *Shigella*.

## Images



Anti-*Shigella dysenteriae* antibody [6]  
(ab80912) at 1/1000 dilution + *Shigella*  
*dysenteriae* IpaA antigen

**Predicted band size : 70 kDa**

Western blot - *Shigella dysenteriae* antibody [6]  
(ab80912)

**Please note:** All products are "FOR RESEARCH USE ONLY AND ARE NOT INTENDED FOR DIAGNOSTIC OR THERAPEUTIC USE"

## Our Abpromise to you: Quality guaranteed and expert technical support

- Replacement or refund for products not performing as stated on the datasheet
- Valid for 12 months from date of delivery
- Response to your inquiry within 24 hours
- We provide support in Chinese, English, French, German, Japanese and Spanish
- Extensive multi-media technical resources to help you
- We investigate all quality concerns to ensure our products perform to the highest standards

If the product does not perform as described on this datasheet, we will offer a refund or replacement. For full details of the Abpromise, please visit <http://www.abcam.com/abpromise> or contact our technical team.

## Terms and conditions

---

- Guarantee only valid for products bought direct from Abcam or one of our authorized distributors