


Product datasheet

Anti-ECHDC1 antibody ab80938

1 Image

Overview

Product name	Anti-ECHDC1 antibody
Description	Rabbit polyclonal to ECHDC1
Tested applications	Suitable for: ELISA, WB
Species reactivity	Reacts with: Human Predicted to work with: Mouse, Rat, Rabbit, Horse, Chicken, Guinea pig, Cow, Cat, Dog 
Immunogen	Synthetic peptide: GVMMLQLLEK VIELENWTEG KGLMVRGAKN TFSSGSDLNA VKSLGTPETS , corresponding to internal sequence amino acids 73-122 of Human ECHDC1 Run BLAST with ExPASy Run BLAST with NCBI
Positive control	MCF7 cell lysate.

Properties

Form	Liquid
Storage instructions	Shipped at 4°C. Upon delivery aliquot and store at -20°C. Avoid repeated freeze / thaw cycles.
Storage buffer	Preservative: None Constituents: 2% Sucrose, PBS
Purity	Immunogen affinity purified
Clonality	Polyclonal
Isotype	IgG

Applications

Our [Abpromise guarantee](#) covers the use of **ab80938** in the following tested applications.

The application notes include recommended starting dilutions; optimal dilutions/concentrations should be determined by the end user.

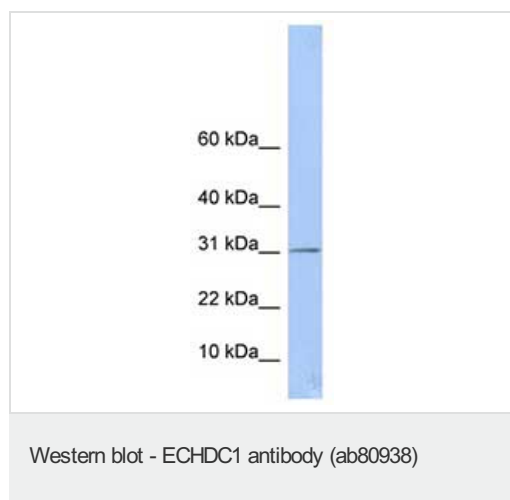
Application	Abreviews	Notes
ELISA		Use at an assay dependent concentration. Titre using peptide based assay: 1/12500.

Application	Abreviews	Notes
WB		Use a concentration of 1 µg/ml. Predicted molecular weight: 34 kDa. Good results were obtained when blocked with 5% non-fat dry milk in 0.05% PBS-T.

Target

Sequence similarities Belongs to the enoyl-CoA hydratase/isomerase family.

Images



Anti-ECHDC1 antibody (ab80938) at 1 µg/ml
(in 5% skim milk / PBS buffer) + MCF7 cell
lysate at 10 µg

Secondary

HRP conjugated anti-Rabbit IgG at 1/50000
dilution

Predicted band size : 34 kDa

Observed band size : 34 kDa

Please note: All products are "FOR RESEARCH USE ONLY AND ARE NOT INTENDED FOR DIAGNOSTIC OR THERAPEUTIC USE"

Our Abpromise to you: Quality guaranteed and expert technical support

- Replacement or refund for products not performing as stated on the datasheet
- Valid for 12 months from date of delivery
- Response to your inquiry within 24 hours
- We provide support in Chinese, English, French, German, Japanese and Spanish
- Extensive multi-media technical resources to help you
- We investigate all quality concerns to ensure our products perform to the highest standards

If the product does not perform as described on this datasheet, we will offer a refund or replacement. For full details of the Abpromise, please visit <http://www.abcam.com/abpromise> or contact our technical team.

Terms and conditions

- Guarantee only valid for products bought direct from Abcam or one of our authorized distributors