


Product datasheet

Anti-LST1 antibody [LST1/02] ab81439

1 References 1 Image

Overview

Product name	Anti-LST1 antibody [LST1/02]
Description	Mouse monoclonal [LST1/02] to LST1
Specificity	The antibody reacts with an extracellular epitope of LST1, an ~6-11kDa protein expressed as various transmembrane or soluble forms.
Tested applications	Suitable for: WB, IP, ICC
Species reactivity	Reacts with: Human Predicted to work with: Rhesus monkey 
Immunogen	Synthetic peptide: SSEGPDLRGRDKRGT conjugated to KLH, corresponding to amino acids 66-80 of Human LST1 Run BLAST with Run BLAST with
Epitope	Extracellular
Positive control	RAJI human Burkitt lymphoma cell line. Whole cell lysate of U937 human Caucasian histiocytic lymphoma cell line.

Properties

Form	Liquid
Storage instructions	Shipped at 4°C. Upon delivery aliquot and store at -20°C or -80°C. Avoid repeated freeze / thaw cycles.
Storage buffer	Preservative: 15mM Sodium Azide Constituents: PBS, pH 7.4
Purity	Protein A purified
Purification notes	Purified from ascites. Purity: > 95% (by SDS-PAGE)
Clonality	Monoclonal
Clone number	LST1/02
Isotype	IgG1

Applications

Our [Abpromise guarantee](#) covers the use of **ab81439** in the following tested applications.

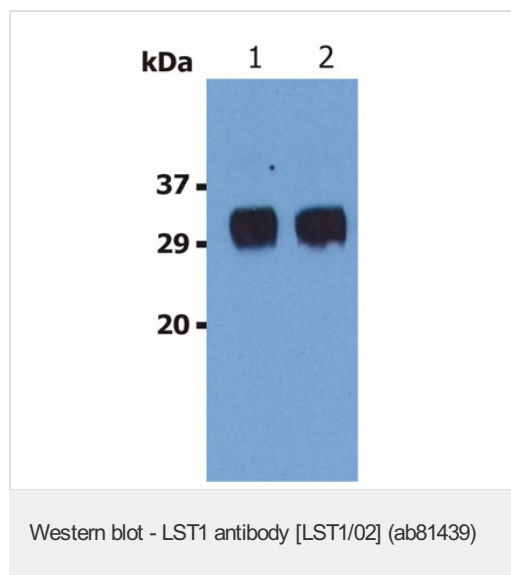
The application notes include recommended starting dilutions; optimal dilutions/concentrations should be determined by the end user.

Application	Abreviews	Notes
WB		Use at an assay dependent dilution. Detects a band of approximately 25-28 kDa (predicted molecular weight: 11 kDa).
IP		Use at an assay dependent dilution.
ICC		Use at an assay dependent dilution.

Target

Function	Possible role in modulating immune responses. Induces morphological changes including production of filopodia and microspikes when overexpressed in a variety of cell types and may be involved in dendritic cell maturation. Isoform 1 and isoform 2 have an inhibitory effect on lymphocyte proliferation.
Tissue specificity	Expressed in lung, tonsil, thymus, placenta, kidney, fetal spleen, fetal liver and brain.
Sequence similarities	Belongs to the LST1 family.
Cellular localization	Membrane. Golgi apparatus membrane. Endomembrane system. Also detected in a perinuclear region corresponding to the localization of the Golgi apparatus and throughout the cytoplasm.

Images



All lanes : Anti-LST1 antibody [LST1/02] (ab81439)

Lane 1 : Whole cell lysate of U937 human Caucasian histiocytic lymphoma cell line.

Lane 2 : Whole cell lysate of U937 human Caucasian histiocytic lymphoma cell line.

Predicted band size : 11 kDa

Observed band size : 25-28 kDa

Please note: All products are "FOR RESEARCH USE ONLY AND ARE NOT INTENDED FOR DIAGNOSTIC OR THERAPEUTIC USE"

Our Abpromise to you: Quality guaranteed and expert technical support

- Replacement or refund for products not performing as stated on the datasheet
- Valid for 12 months from date of delivery

- Response to your inquiry within 24 hours
- We provide support in Chinese, English, French, German, Japanese and Spanish
- Extensive multi-media technical resources to help you
- We investigate all quality concerns to ensure our products perform to the highest standards

If the product does not perform as described on this datasheet, we will offer a refund or replacement. For full details of the Abpromise, please visit <http://www.abcam.com/abpromise> or contact our technical team.

Terms and conditions

- Guarantee only valid for products bought direct from Abcam or one of our authorized distributors