


Product datasheet

Anti-LRRC28 antibody ab83033

1 Image

Overview

Product name	Anti-LRRC28 antibody
Description	Rabbit polyclonal to LRRC28
Host species	Rabbit
Tested applications	Suitable for: WB
Species reactivity	Reacts with: Human Predicted to work with: Mouse, Rat, Rabbit, Horse, Chicken, Guinea pig, Cow, Cat, Dog, Zebrafish 
Immunogen	Synthetic peptide corresponding to a region within N terminal amino acids 35-84 (KDEGLQYLER LYMKRNSLTS LPENLAQKLP NLVELYLHSN NIVVVPEAIG) of Human LRRC28 (NP_653199). Run BLAST with ExPASy Run BLAST with NCBI
Positive control	Jurkat cell lysate.

Properties

Form	Liquid
Storage instructions	Shipped at 4°C. Upon delivery aliquot and store at -20°C or -80°C. Avoid repeated freeze / thaw cycles.
Storage buffer	Preservative: None Constituents: 2% Sucrose, PBS
Purity	Immunogen affinity purified
Clonality	Polyclonal
Isotype	IgG

Applications

Our [Abpromise guarantee](#) covers the use of **ab83033** in the following tested applications.

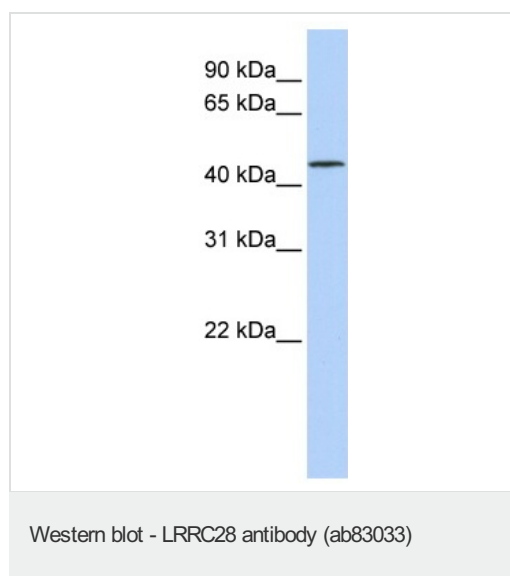
The application notes include recommended starting dilutions; optimal dilutions/concentrations should be determined by the end user.

Application	Abreviews	Notes
WB		Use a concentration of 1 µg/ml. Detects a band of approximately 42 kDa (predicted molecular weight: 42 kDa). Good results were obtained when blocked with 5% non-fat dry milk in 0.05% PBS-T.

Target

Relevance LRRC28 contains 11 LRR (leucine-rich) repeats. The function of the LRRC28 protein is not known.

Images



Anti-LRRC28 antibody (ab83033) at 1 µg/ml
(5% skim milk / PBS buffer) + Jurkat cell lysate
at 10 µg

Secondary

HRP conjugated anti-Rabbit IgG at 1/50000
dilution

Predicted band size: 42 kDa

Observed band size: 42 kDa

Gel concentration: 12%

Please note: All products are "FOR RESEARCH USE ONLY AND ARE NOT INTENDED FOR DIAGNOSTIC OR THERAPEUTIC USE"

Our Abpromise to you: Quality guaranteed and expert technical support

- Replacement or refund for products not performing as stated on the datasheet
- Valid for 12 months from date of delivery
- Response to your inquiry within 24 hours
- We provide support in Chinese, English, French, German, Japanese and Spanish
- Extensive multi-media technical resources to help you
- We investigate all quality concerns to ensure our products perform to the highest standards

If the product does not perform as described on this datasheet, we will offer a refund or replacement. For full details of the Abpromise, please visit <http://www.abcam.com/abpromise> or contact our technical team.

Terms and conditions

- Guarantee only valid for products bought direct from Abcam or one of our authorized distributors