


Product datasheet

Anti-ADAM9 antibody ab83835

1 Image

Overview

Product name	Anti-ADAM9 antibody
Description	Rabbit polyclonal to ADAM9
Host species	Rabbit
Tested applications	Suitable for: WB
Species reactivity	Reacts with: Human Predicted to work with: Mouse, Rat, Rabbit, Horse, Guinea pig, Cow, Cat, Dog, Zebrafish 
Immunogen	A synthetic peptide corresponding to a region within internal amino acids 396 - 445 (NKGGNCLLNI PKPDEAYSAP SCGNKLVDAG EECDGTPKE CELDPCCEGS) of Human ADAM9 (NP_001005845) Run BLAST with ExPASy Run BLAST with NCBI
Positive control	293T cell lysate

Properties

Form	Liquid
Storage instructions	Shipped at 4°C. Upon delivery aliquot and store at -20°C or -80°C. Avoid repeated freeze / thaw cycles.
Storage buffer	Preservative: None Constituents: 2% Sucrose, PBS
Purity	Immunogen affinity purified
Clonality	Polyclonal
Isotype	IgG

Applications

Our [Abpromise guarantee](#) covers the use of **ab83835** in the following tested applications.

The application notes include recommended starting dilutions; optimal dilutions/concentrations should be determined by the end user.

Application	Abreviews	Notes
WB		Use a concentration of 1 µg/ml. Predicted molecular weight: 72 kDa. Good results were obtained when blocked with 5% non-fat dry milk in 0.05% PBS-T.

Target

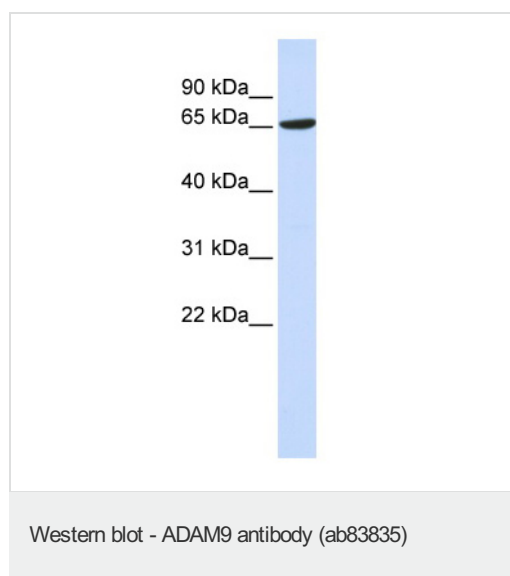
Relevance

ADAM9 encodes disintegrin and metalloprotease (ADAM) domain 9, which is a member of the ADAM protein family. Members of this family are membrane- anchored proteins structurally related to snake venom disintegrins, and have been implicated in a variety of biologic processes involving cell- cell and cell-matrix interactions, including fertilization, muscle development, and neurogenesis. The member encoded by this gene interacts with SH3 domain-containing proteins, binds mitotic arrest deficient 2 beta protein, and is also involved in TPA-induced ectodomain shedding of membrane-anchored heparin-binding EGF-like growth factor.

Cellular localization

Isoform 1: Cell membrane; single-pass type I membrane protein. Isoform 2: Secreted protein.

Images



Anti-ADAM9 antibody (ab83835) at 1 µg/ml +
293T cell lysate at 10 µg

Secondary

HRP conjugated anti-Rabbit IgG at 1/50000
dilution

Predicted band size: 72 kDa

Observed band size: 67 kDa

Gel concentration 12%

Please note: All products are "FOR RESEARCH USE ONLY AND ARE NOT INTENDED FOR DIAGNOSTIC OR THERAPEUTIC USE"

Our Abpromise to you: Quality guaranteed and expert technical support

- Replacement or refund for products not performing as stated on the datasheet
- Valid for 12 months from date of delivery
- Response to your inquiry within 24 hours
- We provide support in Chinese, English, French, German, Japanese and Spanish
- Extensive multi-media technical resources to help you
- We investigate all quality concerns to ensure our products perform to the highest standards

If the product does not perform as described on this datasheet, we will offer a refund or replacement. For full details of the Abpromise, please visit <http://www.abcam.com/abpromise> or contact our technical team.

Terms and conditions

- Guarantee only valid for products bought direct from Abcam or one of our authorized distributors