


## Product datasheet

# Anti-APJ Receptor antibody ab84296

★★★★★ 4 Abreviews 3 References 4 Images

### Overview

---

<b>Product name</b>	Anti-APJ Receptor antibody
<b>Description</b>	Rabbit polyclonal to APJ Receptor
<b>Host species</b>	Rabbit
<b>Tested applications</b>	<b>Suitable for:</b> ICC/IF, WB, IHC-P
<b>Species reactivity</b>	<b>Reacts with:</b> Human <b>Predicted to work with:</b> Mouse, Rat, Chicken, Cow 
<b>Immunogen</b>	Synthetic peptide conjugated to KLH derived from within residues 250 - 350 of Human APJ Receptor. Read Abcam's proprietary immunogen policy (Peptide available as <a href="#">ab101728</a> .)
<b>Positive control</b>	This antibody gave a positive signal in the following lysates: Brain (Human) Tissue Lysate; U-87 MG (Human glioblastoma astrocytoma) Whole Cell Lysate; HeLa (Human epithelial carcinoma cell line) Whole Cell Lysate. This antibody gave a positive result in IHC in the following FFPE tissue: Human liver cancer.

### Properties

---

<b>Form</b>	Liquid
<b>Storage instructions</b>	Shipped at 4°C. Store at +4°C short term (1-2 weeks). Upon delivery aliquot. Store at -20°C or -80°C. Avoid freeze / thaw cycle.
<b>Storage buffer</b>	Preservative: 0.02% Sodium Azide Constituents: 1% BSA, PBS, pH 7.4
<b>Purity</b>	Immunogen affinity purified
<b>Clonality</b>	Polyclonal
<b>Isotype</b>	IgG

### Applications

---

Our [Abpromise guarantee](#) covers the use of **ab84296** in the following tested applications.

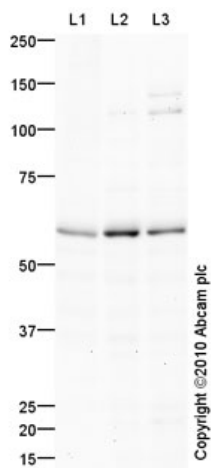
The application notes include recommended starting dilutions; optimal dilutions/concentrations should be determined by the end user.

Application	Abreviews	Notes
ICC/IF	★★★★★	Use a concentration of 5 µg/ml.
WB	★★★★★	Use a concentration of 1 µg/ml. Detects a band of approximately 58 kDa (predicted molecular weight: 42 kDa).
IHC-P	★★★★★	Use a concentration of 5 µg/ml.

## Target

<b>Function</b>	Receptor for apelin coupled to G proteins that inhibit adenylate cyclase activity. Alternative coreceptor with CD4 for HIV-1 infection; may be involved in the development of AIDS dementia.
<b>Tissue specificity</b>	Widely expressed in the brain, in glial cells, astrocytes and neuronal subpopulations, as well as in the spleen, thymus, ovary, small intestine and colon.
<b>Sequence similarities</b>	Belongs to the G-protein coupled receptor 1 family.
<b>Cellular localization</b>	Cell membrane.

## Images



Western blot - APJ Receptor antibody (ab84296)

**All lanes :** Anti-APJ Receptor antibody (ab84296) at 1 µg/ml

**Lane 1 :** Human brain tissue lysate - total protein (ab29466)

**Lane 2 :** U-87 MG (Human glioblastoma astrocytoma) Whole Cell Lysate

**Lane 3 :** HeLa (Human epithelial carcinoma cell line) Whole Cell Lysate

Lysates/proteins at 10 µg per lane.

### Secondary

**All lanes :** Goat polyclonal Secondary Antibody to Rabbit IgG - H&L (HRP), pre-adsorbed at 1/5000 dilution

Developed using the ECL technique.

Performed under reducing conditions.

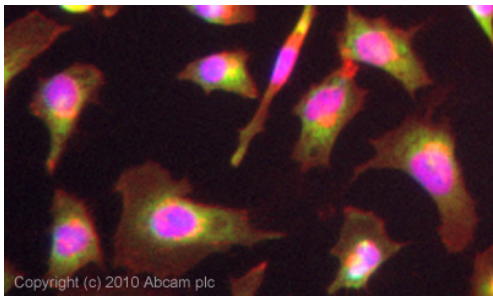
**Predicted band size:** 42 kDa

**Observed band size:** 58 kDa

**Additional bands at:** 110 kDa. We are unsure as to the identity of these extra bands.

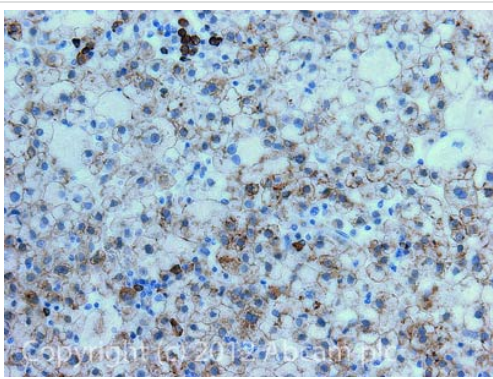
**Exposure time:** 3 minutes

APJ receptor contains a number of potential glycosylation sites (SwissProt) which may explain its migration at a higher molecular weight than predicted.



Immunocytochemistry/ Immunofluorescence - APJ Receptor antibody (ab84296)

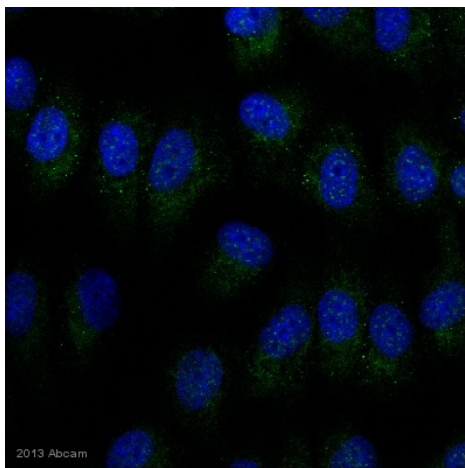
ICC/IF image of ab84296 stained HeLa cells. The cells were 4% PFA fixed (10 min) and then incubated in 1%BSA / 10% normal goat serum / 0.3M glycine in 0.1% PBS-Tween for 1h to permeabilise the cells and block non-specific protein-protein interactions. The cells were then incubated with the antibody (ab84296, 5µg/ml) overnight at +4°C. The secondary antibody (green) was Alexa Fluor® 488 goat anti-rabbit IgG (H+L) used at a 1/1000 dilution for 1h. Alexa Fluor® 594 WGA was used to label plasma membranes (red) at a 1/200 dilution for 1h. DAPI was used to stain the cell nuclei (blue) at a concentration of 1.43µM. This antibody also gave a positive result in 4% PFA fixed (10 min) HepG2 cells at 5µg/ml, and in 100% methanol fixed (5 min) HeLa and HepG2 cells at 5µg/ml.



Immunohistochemistry (Formalin/PFA-fixed paraffin-embedded sections) - Anti-APJ Receptor antibody (ab84296)

IHC image of APJ Receptor staining in Human liver cancer formalin fixed paraffin embedded tissue section, performed on a Leica Bond™ system using the standard protocol F. The section was pre-treated using heat mediated antigen retrieval with sodium citrate buffer (pH6, epitope retrieval solution 1) for 20 mins. The section was then incubated with ab84296, 5µg/ml, for 15 mins at room temperature and detected using an HRP conjugated compact polymer system. DAB was used as the chromogen. The section was then counterstained with haematoxylin and mounted with DPX.

For other IHC staining systems (automated and non-automated) customers should optimize variable parameters such as antigen retrieval conditions, primary antibody concentration and antibody incubation times.



ab84296 staining APJ Receptor in Human endothelial cells by ICC/IF (Immunocytochemistry/immunofluorescence). Cells were fixed with paraformaldehyde, permeabilized with Triton X-100 0.2% and blocked with 20% serum for 60 minutes at 21°C. Samples were incubated with primary antibody (1/200) for 16 hours at 4°C. An Alexa Fluor®488-conjugated Goat anti-rabbit polyclonal(1/300) was used as the secondary antibody.

Immunocytochemistry/ Immunofluorescence - Anti-APJ Receptor antibody (ab84296)

This image is courtesy of an anonymous Abreview

**Please note:** All products are "FOR RESEARCH USE ONLY AND ARE NOT INTENDED FOR DIAGNOSTIC OR THERAPEUTIC USE"

### Our Abpromise to you: Quality guaranteed and expert technical support

- Replacement or refund for products not performing as stated on the datasheet
- Valid for 12 months from date of delivery
- Response to your inquiry within 24 hours
- We provide support in Chinese, English, French, German, Japanese and Spanish
- Extensive multi-media technical resources to help you
- We investigate all quality concerns to ensure our products perform to the highest standards

If the product does not perform as described on this datasheet, we will offer a refund or replacement. For full details of the Abpromise, please visit <http://www.abcam.com/abpromise> or contact our technical team.

### Terms and conditions

- Guarantee only valid for products bought direct from Abcam or one of our authorized distributors