


Product datasheet

Anti-Pescadillo antibody ab84512

1 Image

Overview

Product name	Anti-Pescadillo antibody
Description	Rabbit polyclonal to Pescadillo
Tested applications	Suitable for: IHC-P
Species reactivity	Reacts with: Human Predicted to work with: Chimpanzee, Rhesus monkey, Gorilla, Orangutan 
Immunogen	Synthetic peptide corresponding to a region between residues 535 and the C-terminus (residue 588) of Human Pescadillo (NP_055118.1).
Positive control	Human breast adenocarcinoma tissue.

Properties

Form	Liquid
Storage instructions	Shipped at 4°C. Upon delivery aliquot and store at -20°C. Avoid freeze / thaw cycles.
Storage buffer	Preservative: 0.09% Sodium Azide Constituents: 0.1% BSA, Tris buffered saline
Purity	Immunogen affinity purified
Clonality	Polyclonal
Isotype	IgG

Applications

Our [Abpromise guarantee](#) covers the use of **ab84512** in the following tested applications.

The application notes include recommended starting dilutions; optimal dilutions/concentrations should be determined by the end user.

Application	Abreviews	Notes
-------------	-----------	-------

IHC-P

Application notes	IHC-P: 1/100 - 1/500. Epitope exposure is recommended. Epitope exposure with citrate buffer will enhance staining.
--------------------------	--

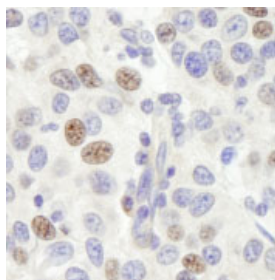
Not yet tested in other applications.

Optimal dilutions/concentrations should be determined by the end user.

Target

Function	Component of the PeBoW complex, which is required for maturation of 28S and 5.8S ribosomal RNAs and formation of the 60S ribosome.
Tissue specificity	Significant levels are detected in a variety of cancer cell lines, including glioblastoma, breast carcinoma, colon carcinoma and cervical carcinoma cells. Levels are abnormally elevated in malignant tumors of astrocytic origin.
Sequence similarities	Belongs to the pescadillo family. Contains 1 BRCT domain.
Post-translational modifications	Sumoylated.
Cellular localization	Nucleus > nucleolus. Nucleus > nucleoplasm. Chromosome. Appears to localize to the periphery of metaphase chromosomes during mitosis and to the prenucleolar bodies that form in mitotic cells prior to the actual nucleoli.

Images



ab84512, at 1/250 dilution, staining Pescadillo in formalin-fixed, paraffin-embedded human breast adenocarcinoma by Immunohistochemistry, using DAB staining.

Immunohistochemistry (Formalin/PFA-fixed paraffin-embedded sections) - Pescadillo antibody (ab84512)

Please note: All products are "FOR RESEARCH USE ONLY AND ARE NOT INTENDED FOR DIAGNOSTIC OR THERAPEUTIC USE"

Our Abpromise to you: Quality guaranteed and expert technical support

- Replacement or refund for products not performing as stated on the datasheet
- Valid for 12 months from date of delivery
- Response to your inquiry within 24 hours
- We provide support in Chinese, English, French, German, Japanese and Spanish
- Extensive multi-media technical resources to help you
- We investigate all quality concerns to ensure our products perform to the highest standards

If the product does not perform as described on this datasheet, we will offer a refund or replacement. For full details of the Abpromise, please visit <http://www.abcam.com/abpromise> or contact our technical team.

Terms and conditions

- Guarantee only valid for products bought direct from Abcam or one of our authorized distributors