


Product datasheet

Anti-IDH2 antibody ab84726

2 Abreviews 2 References 5 Images

Overview

Product name	Anti-IDH2 antibody
Description	Rabbit polyclonal to IDH2
Tested applications	Suitable for: IHC-P, WB, ICC/IF
Species reactivity	Reacts with: Human, Zebrafish Predicted to work with: Mouse, Rat, Rabbit, Horse, Chicken, Guinea pig, Cow, Cat, Dog, Pig, Saccharomyces cerevisiae, Caenorhabditis elegans 
Immunogen	Synthetic peptide, corresponding to a region within internal sequence amino acids 143-192 (GGTVFREPIICKNIPRLVPGWTKPITIGRHAHGDQYKATDFVADRAGTF K) of Human IDH2 (NP_002159)
Positive control	Human fetal muscle lysate.

Properties

Form	Liquid
Storage instructions	Shipped at 4°C. Upon delivery aliquot and store at -20°C or -80°C. Avoid repeated freeze / thaw cycles.
Storage buffer	Preservative: None Constituents: 2% Sucrose, PBS
Purity	Immunogen affinity purified
Purification notes	ab84726 is purified by a peptide affinity chromatography method.
Clonality	Polyclonal
Isotype	IgG

Applications

Our [Abpromise guarantee](#) covers the use of **ab84726** in the following tested applications.

The application notes include recommended starting dilutions; optimal dilutions/concentrations should be determined by the end user.

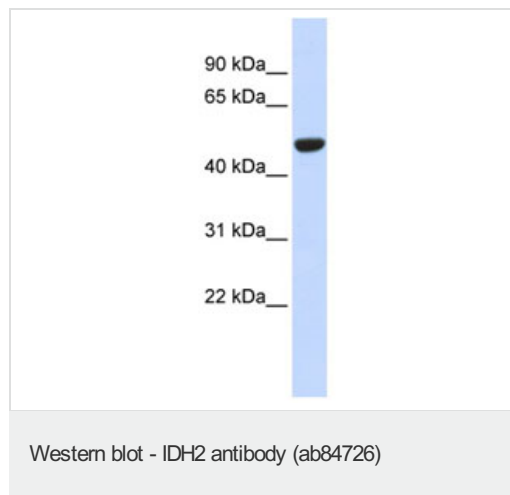
Application	Abreviews	Notes
IHC-P		Use a concentration of 5 µg/ml.

Application	Abreviews	Notes
WB		Use a concentration of 1 µg/ml. Detects a band of approximately 51 kDa (predicted molecular weight: 51 kDa). Can be blocked with Human IDH2 peptide (ab111673) . Good results were obtained when blocked with 5% non-fat dry milk in 0.05% PBS-T.
ICC/IF		Use a concentration of 5 µg/ml.

Target

Function	Plays a role in intermediary metabolism and energy production. It may tightly associate or interact with the pyruvate dehydrogenase complex.
Involvement in disease	D-2-hydroxyglutaric aciduria 2 Glioma Genetic variations are associated with cartilaginous tumors such as enchondroma or chondrosarcoma.
Sequence similarities	Belongs to the isocitrate and isopropylmalate dehydrogenases family.
Post-translational modifications	Acetylation at Lys-413 dramatically reduces catalytic activity. Deacetylated by SIRT3.
Cellular localization	Mitochondrion.

Images



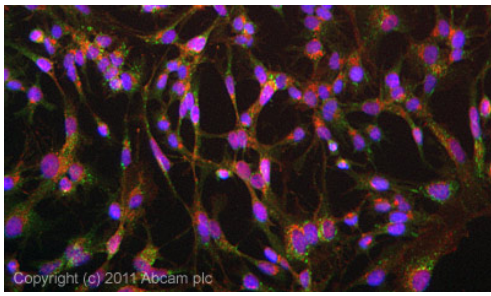
Anti-IDH2 antibody (ab84726) at 1 µg/ml +
Human fetal muscle lysate at 10 µg

Secondary

anti-Rabbit IgG HRP at 1/50000 dilution

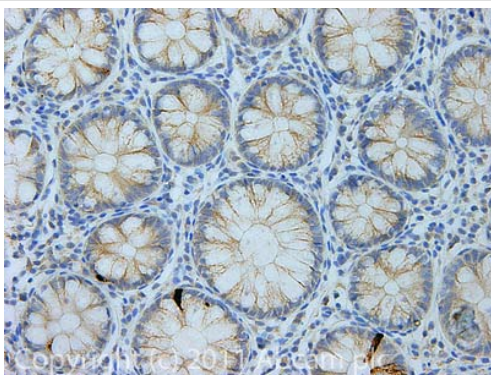
Predicted band size : 51 kDa

Observed band size : 51 kDa



Immunocytochemistry/ Immunofluorescence-IDH2 antibody(ab84726)

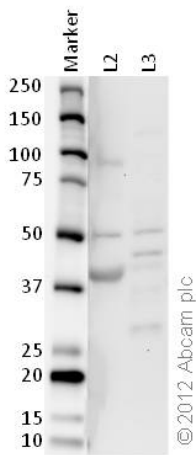
ICC/IF image of ab84726 stained HepG2 cells. The cells were 4% formaldehyde fixed (10 min) and then incubated in 1%BSA / 10% normal goat serum / 0.3M glycine in 0.1% PBS-Tween for 1h to permeabilise the cells and block non-specific protein-protein interactions. The cells were then incubated with the antibody (ab84726, 5µg/ml) overnight at +4°C. The secondary antibody (green) was [ab96899](#), DyLight® 488 goat anti-rabbit IgG (H+L) used at a 1/250 dilution for 1h. Alexa Fluor® 594 WGA was used to label plasma membranes (red) at a 1/200 dilution for 1h. DAPI was used to stain the cell nuclei (blue) at a concentration of 1.43µM.



Immunohistochemistry (Formalin/PFA-fixed paraffin-embedded sections) - Anti-IDH2 antibody (ab84726)

IHC image of ab84726 staining in Hu Colon formalin fixed paraffin embedded tissue section, performed on a Leica Bond™ system using the standard protocol F. The section was pre-treated using heat mediated antigen retrieval with sodium citrate buffer (pH6, epitope retrieval solution 1) for 20 mins. The section was then incubated with ab84726, 5µg/ml, for 15 mins at room temperature and detected using an HRP conjugated compact polymer system. DAB was used as the chromogen. The section was then counterstained with haematoxylin and mounted with DPX.

For other IHC staining systems (automated and non-automated) customers should optimize variable parameters such as antigen retrieval conditions, primary antibody concentration and antibody incubation times.



Western blot - Anti-IDH2 antibody (ab84726)

All lanes : Anti-IDH2 antibody (ab84726) at 1 µg/ml

Lane 1 : Marker

Lane 2 : Zebrafish skeletal muscle homogenate (20ug)

Lane 3 : JURKAT (Human T cell lymphoblast-like cell line) Whole Cell Lysate (20ug)

Secondary

Goat polyclonal to Rabbit IgG – H&L – Pre-Adsorbed (HRP) at 1/6000 dilution

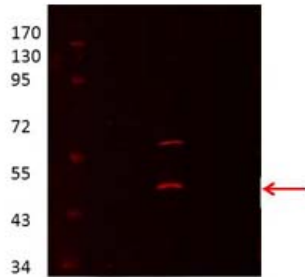
Developed using the ECL technique

Performed under reducing conditions.

Predicted band size : 51 kDa

Observed band size : 50 kDa

Exposure time : 5 minutes



Western blot - Anti-IDH2 antibody (ab84726)

Anti-IDH2 antibody (ab84726) at 1/1000 dilution + rat proximal kidney tubules purified from the cortex at 1 µg/ml

Predicted band size : 51 kDa

Observed band size : 47 kDa

Please note: All products are "FOR RESEARCH USE ONLY AND ARE NOT INTENDED FOR DIAGNOSTIC OR THERAPEUTIC USE"

Our Abpromise to you: Quality guaranteed and expert technical support

- Replacement or refund for products not performing as stated on the datasheet
- Valid for 12 months from date of delivery
- Response to your inquiry within 24 hours
- We provide support in Chinese, English, French, German, Japanese and Spanish
- Extensive multi-media technical resources to help you

- We investigate all quality concerns to ensure our products perform to the highest standards

If the product does not perform as described on this datasheet, we will offer a refund or replacement. For full details of the Abpromise, please visit <http://www.abcam.com/abpromise> or contact our technical team.

Terms and conditions

- Guarantee only valid for products bought direct from Abcam or one of our authorized distributors