


Product datasheet

Anti-STUB1 antibody ab84781

4 Images

Overview

<b>Product name</b>	Anti-STUB1 antibody
<b>Description</b>	Rabbit polyclonal to STUB1
<b>Host species</b>	Rabbit
<b>Tested applications</b>	<b>Suitable for:</b> IHC-P
<b>Species reactivity</b>	<b>Reacts with:</b> Mouse, Human <b>Predicted to work with:</b> Rat, Horse, Chicken, Guinea pig, Cow, Dog, Turkey, Pig, Chimpanzee, Rhesus monkey, Gorilla, Orangutan, Xenopus tropicalis 
<b>Immunogen</b>	Synthetic peptide corresponding to a region between residue 253 and 303 of Human STUB1 (NP_005852.2).
<b>Positive control</b>	Human Breast Carcinoma, Prostate Carcinoma. Mouse Teratoma.

Properties

<b>Form</b>	Liquid
<b>Storage instructions</b>	Shipped at 4°C. Upon delivery aliquot and store at -20°C. Avoid freeze / thaw cycles.
<b>Storage buffer</b>	Preservative: 0.09% Sodium Azide Constituents: 0.1% BSA, Tris buffered saline
<b>Purity</b>	Immunogen affinity purified
<b>Clonality</b>	Polyclonal
<b>Isotype</b>	IgG

Applications

Our [Abpromise guarantee](#) covers the use of **ab84781** in the following tested applications.

The application notes include recommended starting dilutions; optimal dilutions/concentrations should be determined by the end user.

Application	Abreviews	Notes
-------------	-----------	-------

IHC-P

<b>Application notes</b>	IHC-P: 1/100 - 1/500. Epitope exposure is recommended. Epitope exposure with citrate buffer
--------------------------	---

will enhance staining.

Not yet tested in other applications.

Optimal dilutions/concentrations should be determined by the end user.

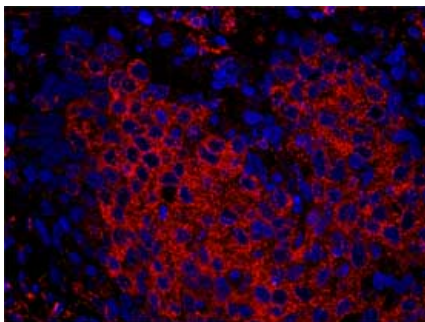
---

## Target

<b>Function</b>	E3 ubiquitin-protein ligase which targets misfolded chaperone substrates towards proteasomal degradation. Ubiquitinates NOS1 in concert with Hsp70 and Hsp40. Modulates the activity of several chaperone complexes, including Hsp70, Hsc70 and Hsp90. Mediates transfer of non-canonical short ubiquitin chains to HSPA8 that have no effect on HSPA8 degradation. Mediates polyubiquitination of DNA polymerase beta (POLB) at 'Lys-41', 'Lys-61' and 'Lys-81', thereby playing a role in base-excision repair: catalyzes polyubiquitination by amplifying the HUWE1/ARF-BP1-dependent monoubiquitination and leading to POLB-degradation by the proteasome. Mediates polyubiquitination of CYP3A4.
<b>Tissue specificity</b>	Highly expressed in skeletal muscle, heart, pancreas, brain and placenta. Detected in kidney, liver and lung.
<b>Pathway</b>	Protein modification; protein ubiquitination.
<b>Sequence similarities</b>	Contains 3 TPR repeats. Contains 1 U-box domain.
<b>Domain</b>	The TPR domain is essential for ubiquitination mediated by UBE2D1.
<b>Post-translational modifications</b>	Phosphorylated upon DNA damage, probably by ATM or ATR. Auto-ubiquitinated; mediated by UBE2D1 and UBE2D2.
<b>Cellular localization</b>	Cytoplasm.

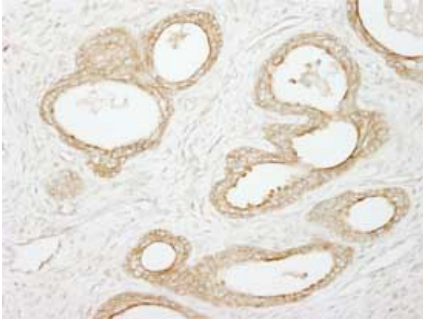
---

## Images



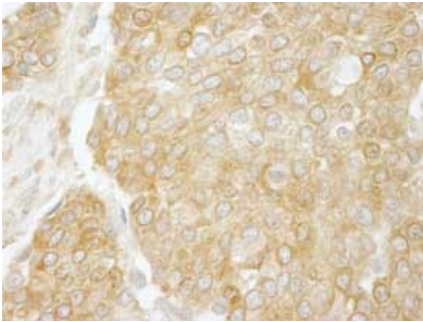
ab84781, at 1/100 dilution, staining STUB1 in formalin-fixed, paraffin-embedded human breast carcinoma by Immunohistochemistry using a Red-fluorescent goat anti-rabbit IgG highly cross-adsorbed Hilyte Plus<sup>TM</sup>555 secondary antibody at a dilution of 1/100.

Immunohistochemistry (Formalin/PFA-fixed paraffin-embedded sections) - STUB1 antibody (ab84781)



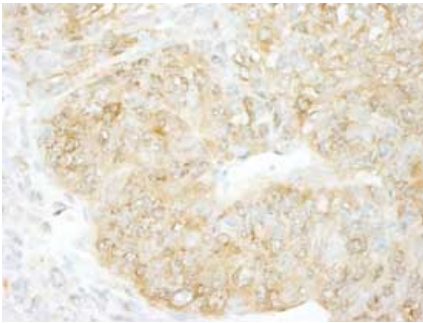
ab84781, at 1/500 dilution, staining STUB1 in formalin-fixed, paraffin-embedded human prostate carcinoma by Immunohistochemistry using DAB staining.

Immunohistochemistry (Formalin/PFA-fixed paraffin-embedded sections) - STUB1 antibody (ab84781)



ab84781, at 1/500 dilution, staining STUB1 in formalin-fixed, paraffin-embedded human breast carcinoma by Immunohistochemistry using DAB staining.

Immunohistochemistry (Formalin/PFA-fixed paraffin-embedded sections) - STUB1 antibody (ab84781)



ab84781, at 1/100 dilution, staining STUB1 in formalin-fixed, paraffin-embedded mouse teratoma by Immunohistochemistry using DAB staining.

Immunohistochemistry (Formalin/PFA-fixed paraffin-embedded sections) - STUB1 antibody (ab84781)

**Please note:** All products are "FOR RESEARCH USE ONLY AND ARE NOT INTENDED FOR DIAGNOSTIC OR THERAPEUTIC USE"

### Our Promise to you: Quality guaranteed and expert technical support

- Replacement or refund for products not performing as stated on the datasheet
- Valid for 12 months from date of delivery
- Response to your inquiry within 24 hours
- We provide support in Chinese, English, French, German, Japanese and Spanish

- Extensive multi-media technical resources to help you
- We investigate all quality concerns to ensure our products perform to the highest standards

If the product does not perform as described on this datasheet, we will offer a refund or replacement. For full details of the Abpromise, please visit <http://www.abcam.com/abpromise> or contact our technical team.

### **Terms and conditions**

---

- Guarantee only valid for products bought direct from Abcam or one of our authorized distributors