

## Product datasheet

# Anti-Grainyhead-like protein 1 homolog antibody ab85193

[1 Image](#)

### Overview

<b>Product name</b>	Anti-Grainyhead-like protein 1 homolog antibody
<b>Description</b>	Rabbit polyclonal to Grainyhead-like protein 1 homolog
<b>Host species</b>	Rabbit
<b>Tested applications</b>	<b>Suitable for:</b> WB
<b>Species reactivity</b>	<b>Reacts with:</b> Human <b>Predicted to work with:</b> Mouse, Rat, Horse, Cow, Cat, Dog, Pig
<b>Immunogen</b>	Synthetic peptide corresponding to a region within the N terminal amino acids 108-157 (GENRVQVLKN VPFNVLPHG NQLGIDKRGH LTAPDTTVTV SIATMPTHSI) of human Grainyhead-like protein 1 homolog (NP_937825). <a href="#">Run BLAST with ExPASy</a> <a href="#">Run BLAST with NCBI</a>
<b>Positive control</b>	Jurkat cell lysate

### Properties

<b>Form</b>	Liquid
<b>Storage instructions</b>	Shipped at 4°C. Upon delivery aliquot and store at -20°C. Avoid repeated freeze / thaw cycles.
<b>Storage buffer</b>	Preservative: None Constituents: 2% Sucrose, PBS
<b>Purity</b>	Immunogen affinity purified
<b>Purification notes</b>	ab85193 is purified by peptide affinity chromatography method.
<b>Clonality</b>	Polyclonal
<b>Isotype</b>	IgG

### Applications

Our [Abpromise guarantee](#) covers the use of **ab85193** in the following tested applications.

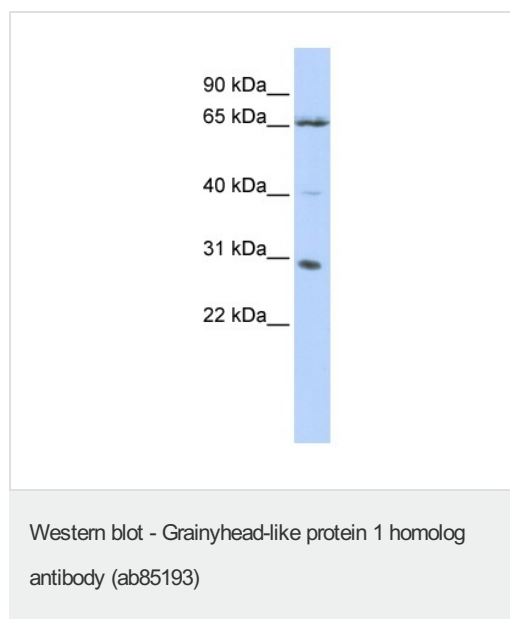
The application notes include recommended starting dilutions; optimal dilutions/concentrations should be determined by the end user.

Application	Abreviews	Notes
WB		Use a concentration of 1 µg/ml. Predicted molecular weight: 70 kDa. Good results were obtained when blocked with 5% non-fat dry milk in 0.05% PBS-T.

## Target

<b>Function</b>	Transcription factor. Isoform 1 may function as an activator and isoform 2 as a repressor in tissues where both forms are expressed. May play a role in development. May be involved in epidermal differentiation (By similarity). Binds and transactivates the EN1 promoter.
<b>Tissue specificity</b>	Isoform 1 is highly expressed in brain, pancreas, tonsil, placenta and kidney. Isoform 2 is highly expressed in brain and liver. Highly expressed in placental JEG-3 cells and at very low levels in non-steroidogenic cells. No expression detected in adrenal NCI-H295A cells.
<b>Sequence similarities</b>	Belongs to the grh/CP2 family. Grainyhead subfamily.
<b>Developmental stage</b>	Expressed in fetal liver and brain.
<b>Cellular localization</b>	Nucleus.

## Images



Anti-Grainyhead-like protein 1 homolog antibody (ab85193) at 1 µg/ml (in 5% skim milk / PBS buffer) + Jurkat cell lysate at 10 µg

### Secondary

HRP conjugated anti-Rabbit IgG at 1/50000 dilution

**Predicted band size:** 70 kDa

**Observed band size:** 70 kDa

**Additional bands at:** 30 kDa (possible isoform), 40 kDa (possible isoform)

12% gel concentration

**Please note:** All products are "FOR RESEARCH USE ONLY AND ARE NOT INTENDED FOR DIAGNOSTIC OR THERAPEUTIC USE"

## Our Promise to you: Quality guaranteed and expert technical support

- Replacement or refund for products not performing as stated on the datasheet
- Valid for 12 months from date of delivery

- Response to your inquiry within 24 hours
- We provide support in Chinese, English, French, German, Japanese and Spanish
- Extensive multi-media technical resources to help you
- We investigate all quality concerns to ensure our products perform to the highest standards

If the product does not perform as described on this datasheet, we will offer a refund or replacement. For full details of the Abpromise, please visit <http://www.abcam.com/abpromise> or contact our technical team.

### **Terms and conditions**

---

- Guarantee only valid for products bought direct from Abcam or one of our authorized distributors