

Product datasheet

Anti-PEDF antibody ab85232

1 Image

Overview

<b>Product name</b>	Anti-PEDF antibody
<b>Description</b>	Rabbit polyclonal to PEDF
<b>Host species</b>	Rabbit
<b>Tested applications</b>	<b>Suitable for:</b> WB, ELISA
<b>Species reactivity</b>	<b>Reacts with:</b> Human
<b>Immunogen</b>	Synthetic peptide selected from the center region of Human PEDF, conjugated to KLH (NP_002606).
<b>Positive control</b>	K562 cell line lysate.

Properties

<b>Form</b>	Liquid
<b>Storage instructions</b>	Shipped at 4°C. Upon delivery aliquot and store at -20°C. Avoid repeated freeze / thaw cycles.
<b>Storage buffer</b>	Preservative: 0.09% Sodium Azide Constituents: PBS
<b>Purity</b>	Ammonium Sulphate Precipitation
<b>Purification notes</b>	ab85232 is prepared by Saturated Ammonium Sulphate (SAS) precipitation followed by dialysis against PBS.
<b>Clonality</b>	Polyclonal
<b>Isotype</b>	IgG

Applications

Our [Abpromise guarantee](#) covers the use of **ab85232** in the following tested applications.

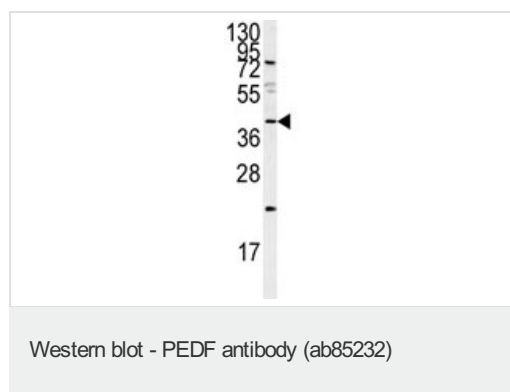
The application notes include recommended starting dilutions; optimal dilutions/concentrations should be determined by the end user.

Application	Abreviews	Notes
WB		1/50 - 1/100. Detects a band of approximately 46 kDa (predicted molecular weight: 46 kDa).
ELISA		1/1000.

## Target

<b>Function</b>	Neurotrophic protein; induces extensive neuronal differentiation in retinoblastoma cells. Potent inhibitor of angiogenesis. As it does not undergo the S (stressed) to R (relaxed) conformational transition characteristic of active serpins, it exhibits no serine protease inhibitory activity.
<b>Tissue specificity</b>	Retinal pigment epithelial cells and blood plasma.
<b>Sequence similarities</b>	Belongs to the serpin family.
<b>Developmental stage</b>	Expressed in quiescent cells.
<b>Domain</b>	The N-terminal (AA 44-121) exhibits neurite outgrowth-inducing activity. The C-terminal exposed loop (AA 382-418) is essential for serpin activity.
<b>Post-translational modifications</b>	The N-terminus is blocked. Extracellular phosphorylation enhances antiangiogenic activity. N- and O-glycosylated. O-glycosylated with a core 1 or possibly core 8 glycan.
<b>Cellular localization</b>	Secreted. Melanosome. Enriched in stage I melanosomes.

## Images



Anti-PEDF antibody (ab85232) at 1/50 dilution + K562 cell line lysate at 35 µg

**Predicted band size:** 46 kDa

**Observed band size:** 46 kDa

**Additional bands at:** 24 kDa, 85 kDa. We are unsure as to the identity of these extra bands.

**Please note:** All products are "FOR RESEARCH USE ONLY AND ARE NOT INTENDED FOR DIAGNOSTIC OR THERAPEUTIC USE"

## Our Abpromise to you: Quality guaranteed and expert technical support

- Replacement or refund for products not performing as stated on the datasheet
- Valid for 12 months from date of delivery
- Response to your inquiry within 24 hours
- We provide support in Chinese, English, French, German, Japanese and Spanish
- Extensive multi-media technical resources to help you
- We investigate all quality concerns to ensure our products perform to the highest standards

If the product does not perform as described on this datasheet, we will offer a refund or replacement. For full details of the Abpromise, please visit <http://www.abcam.com/abpromise> or contact our technical team.

## Terms and conditions

- Guarantee only valid for products bought direct from Abcam or one of our authorized distributors