

## Product datasheet

# Anti-PKDREJ antibody ab85676

1 Image

### Overview

<b>Product name</b>	Anti-PKDREJ antibody
<b>Description</b>	Rabbit polyclonal to PKDREJ
<b>Host species</b>	Rabbit
<b>Tested applications</b>	<b>Suitable for:</b> WB
<b>Species reactivity</b>	<b>Reacts with:</b> Human <b>Predicted to work with:</b> Chimpanzee
<b>Immunogen</b>	Synthetic peptide corresponding to a region within internal sequence amino acids 936-985 (VADNGSVLEI TPDVAEVYLV RKNLTFAAFN LTVGPNSEVD GSLKKTGGF) of Human PKDREJ (NP_006062). <a href="#">Run BLAST with ExPASy</a> <a href="#">Run BLAST with NCBI</a>
<b>Positive control</b>	HepG2 cell lysate.

### Properties

<b>Form</b>	Liquid
<b>Storage instructions</b>	Shipped at 4°C. Upon delivery aliquot and store at -20°C. Avoid repeated freeze / thaw cycles.
<b>Storage buffer</b>	Preservative: None Constituents: 2% Sucrose, PBS
<b>Purity</b>	Immunogen affinity purified
<b>Clonality</b>	Polyclonal
<b>Isotype</b>	IgG

### Applications

Our [Abpromise guarantee](#) covers the use of **ab85676** in the following tested applications.

The application notes include recommended starting dilutions; optimal dilutions/concentrations should be determined by the end user.

Application	Abreviews	Notes
WB		Use a concentration of 1 µg/ml. Predicted molecular weight: 255 kDa. Good results were obtained when blocked with 5% non-fat dry milk in 0.05% PBS-T.

## Target

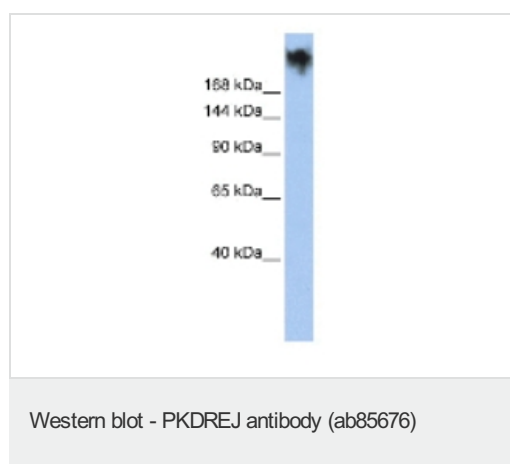
### Relevance

PKDREJ is a multi-pass membrane protein and a member of the polycystin protein family. It contains 11 transmembrane domains, a receptor for egg jelly (REJ) domain, a G-protein-coupled receptor proteolytic site (GPS) domain, and a polycystin-1, lipoxygenase, alpha-toxin (PLAT) domain. It is thought to function as a subunit of a cation channel and play a role in fertilization. It may generate a Ca(2+) transporting channel directly involved in initiating the acrosome reaction of the sperm. Alternative splice variants have been described but their biological natures have not been determined.

### Cellular localization

Cell Membrane

## Images



Anti-PKDREJ antibody (ab85676) at 1 µg/ml  
(5% skim milk / PBS buffer) + HepG2 cell  
lysate at 10 µg

### Secondary

HRP conjugated anti-Rabbit IgG at 1/50000  
dilution

**Predicted band size:** 255 kDa

**Observed band size:** 255 kDa

Gel concentration: 6-18%

**Please note:** All products are "FOR RESEARCH USE ONLY AND ARE NOT INTENDED FOR DIAGNOSTIC OR THERAPEUTIC USE"

## Our Abpromise to you: Quality guaranteed and expert technical support

- Replacement or refund for products not performing as stated on the datasheet
- Valid for 12 months from date of delivery
- Response to your inquiry within 24 hours
- We provide support in Chinese, English, French, German, Japanese and Spanish
- Extensive multi-media technical resources to help you
- We investigate all quality concerns to ensure our products perform to the highest standards

If the product does not perform as described on this datasheet, we will offer a refund or replacement. For full details of the Abpromise, please visit <http://www.abcam.com/abpromise> or contact our technical team.

## Terms and conditions

---

- Guarantee only valid for products bought direct from Abcam or one of our authorized distributors