

## Product datasheet

# Anti-NFYC antibody ab86237

3 Images

### Overview

<b>Product name</b>	Anti-NFYC antibody
<b>Description</b>	Rabbit polyclonal to NFYC
<b>Host species</b>	Rabbit
<b>Tested applications</b>	<b>Suitable for:</b> WB, IP, IHC-P
<b>Species reactivity</b>	<b>Reacts with:</b> Human <b>Predicted to work with:</b> Ferret, Rhesus monkey, Gorilla
<b>Immunogen</b>	Synthetic peptide corresponding to a region between residue 325 and 375 of Human NFYC (CAI16533.1).
<b>Positive control</b>	Whole cell lysate from HeLa cells and 293T cells.

### Properties

<b>Form</b>	Liquid
<b>Storage instructions</b>	Shipped at 4°C. Upon delivery aliquot and store at -20°C. Avoid freeze / thaw cycles.
<b>Storage buffer</b>	Preservative: 0.09% Sodium Azide Constituents: 0.1% BSA, Tris buffered saline
<b>Purity</b>	Immunogen affinity purified
<b>Clonality</b>	Polyclonal
<b>Isotype</b>	IgG

### Applications

Our [Abpromise guarantee](#) covers the use of **ab86237** in the following tested applications.

The application notes include recommended starting dilutions; optimal dilutions/concentrations should be determined by the end user.

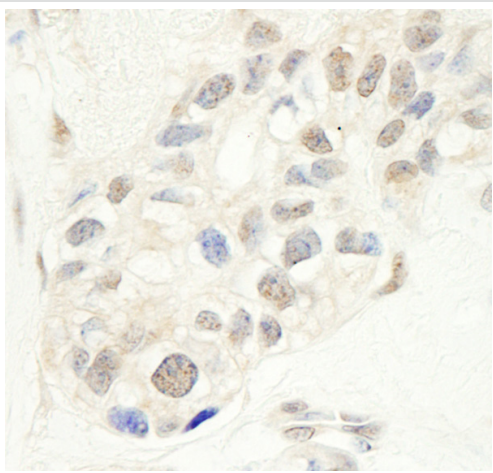
Application	Abreviews	Notes
WB		1/2000 - 1/10000. Detects a band of approximately 55 kDa (predicted molecular weight: 50 kDa).
IP		Use at 2-5 µg/mg of lysate.

Application	Abreviews	Notes
IHC-P		1/100 - 1/500. Perform heat mediated antigen retrieval with citrate buffer pH 6 before commencing with IHC staining protocol.

## Target

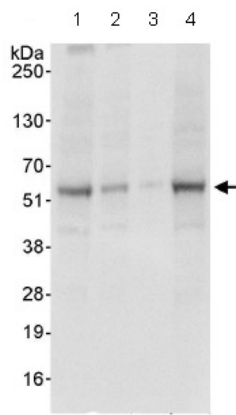
<b>Function</b>	Stimulates the transcription of various genes by recognizing and binding to a CCAAT motif in promoters, for example in type 1 collagen, albumin and beta-actin genes.
<b>Sequence similarities</b>	Belongs to the NFYC/HAP5 subunit family.
<b>Cellular localization</b>	Nucleus.

## Images



Immunohistochemistry (Formalin/PFA-fixed paraffin-embedded sections) analysis of human breast carcinoma tissue labelling NFYC with ab86237 at 1/200 (1 µg/ml).  
Detection: DAB.

Immunohistochemistry (Formalin/PFA-fixed paraffin-embedded sections) - Anti-NFYC antibody (ab86237)



Western blot - NFYC antibody (ab86237)

**All lanes :** Anti-NFYC antibody (ab86237) at 0.04  $\mu\text{g/ml}$

**Lane 1 :** Whole cell lysate from HeLa cells at 50  $\mu\text{g}$

**Lane 2 :** Whole cell lysate from HeLa cells at 15  $\mu\text{g}$

**Lane 3 :** Whole cell lysate from HeLa cells at 5  $\mu\text{g}$

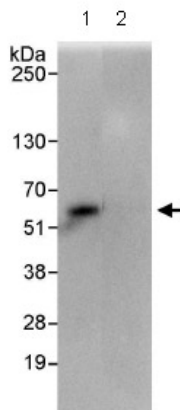
**Lane 4 :** Whole cell lysate from 293T cells at 50  $\mu\text{g}$

Developed using the ECL technique.

**Predicted band size:** 50 kDa

**Observed band size:** 55 kDa

**Exposure time:** 10 seconds



Immunoprecipitation - NFYC antibody (ab86237)

Detection of NFYC in Immunoprecipitates of Whole cell lysate from HeLa cells (1 mg for IP, 20% of IP loaded) using ab86237 at 3  $\mu\text{g/mg}$  lysate for IP (Lane 1) and at 1  $\mu\text{g/ml}$  for subsequent Western blot detection. Lane 2 represents control IgG IP. Detection: Chemiluminescence with an exposure time of 1 second.

**Please note:** All products are "FOR RESEARCH USE ONLY AND ARE NOT INTENDED FOR DIAGNOSTIC OR THERAPEUTIC USE"

### Our Abpromise to you: Quality guaranteed and expert technical support

- Replacement or refund for products not performing as stated on the datasheet
- Valid for 12 months from date of delivery
- Response to your inquiry within 24 hours
- We provide support in Chinese, English, French, German, Japanese and Spanish
- Extensive multi-media technical resources to help you

- We investigate all quality concerns to ensure our products perform to the highest standards

If the product does not perform as described on this datasheet, we will offer a refund or replacement. For full details of the Abpromise, please visit <http://www.abcam.com/abpromise> or contact our technical team.

### **Terms and conditions**

---

- Guarantee only valid for products bought direct from Abcam or one of our authorized distributors