

## Product datasheet

# Anti-FBXL2 antibody ab86545

1 Image

### Overview

<b>Product name</b>	Anti-FBXL2 antibody
<b>Description</b>	Rabbit polyclonal to FBXL2
<b>Host species</b>	Rabbit
<b>Tested applications</b>	<b>Suitable for:</b> WB
<b>Species reactivity</b>	<b>Reacts with:</b> Human <b>Predicted to work with:</b> Mouse, Rat, Horse, Chicken, Guinea pig, Cow, Cat, Dog, Zebrafish
<b>Immunogen</b>	Synthetic peptide corresponding to a region within the N terminal amino acids 72-121 (ISKRCGGFLR KLSLRGCIGV GDSSLKTFAQ NCRNIEHLNL NGCTKITDST) of Human FBXL2 (NP_036289). <a href="#">Run BLAST with ExPASy</a> <a href="#">Run BLAST with NCBI</a>
<b>Positive control</b>	Transfected 293T cell lysate

### Properties

<b>Form</b>	Liquid
<b>Storage instructions</b>	Shipped at 4°C. Upon delivery aliquot and store at -20°C. Avoid repeated freeze / thaw cycles.
<b>Storage buffer</b>	Preservative: None Constituents: 2% Sucrose, PBS
<b>Purity</b>	Immunogen affinity purified
<b>Clonality</b>	Polyclonal
<b>Isotype</b>	IgG

### Applications

Our [Abpromise guarantee](#) covers the use of **ab86545** in the following tested applications.

The application notes include recommended starting dilutions; optimal dilutions/concentrations should be determined by the end user.

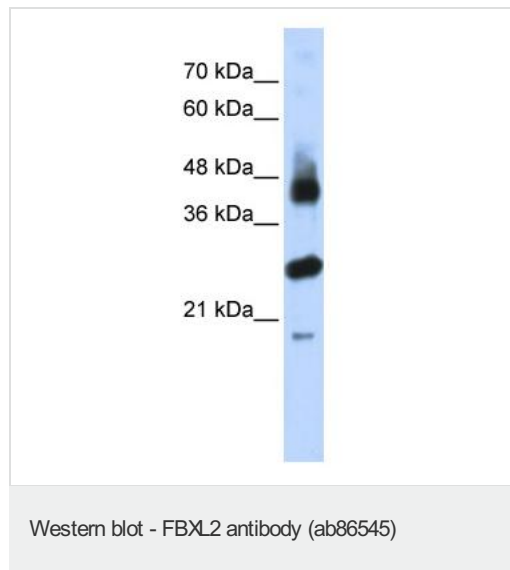
Application	Abreviews	Notes
-------------	-----------	-------

Application	Abreviews	Notes
WB		Use a concentration of 1 µg/ml. Predicted molecular weight: 47 kDa. Good results were obtained when blocked with 5% non-fat dry milk in 0.05% PBS-T.

## Target

<b>Function</b>	Calcium-activated substrate recognition component of a SCF (SKP1-cullin-F-box protein) E3 ubiquitin-protein ligase complex which mediates the ubiquitination and subsequent proteasomal degradation of target proteins. Unlike many F-box proteins, FBXL2 doesn't seem to target phosphodegron within its substrates but rather calmodulin-binding motifs. Targets PCYT1A for its monoubiquitination and degradation, this is antagonized by calmodulin (By similarity). Targets the cyclins CCND2 and CCND3 for polyubiquitination and degradation, leading to cell-cycle arrest in G(0), also antagonized by calmodulin. Binds to hepatitis C virus non-structural protein 5A (NS5A) in a reaction crucial for hepatitis C virus RNA replication.
<b>Tissue specificity</b>	Expressed in brain, heart, kidney, liver, lung, pancreas and placenta.
<b>Sequence similarities</b>	Contains 1 F-box domain. Contains 13 LRR (leucine-rich) repeats.
<b>Cellular localization</b>	Membrane.

## Images



Anti-FBXL2 antibody (ab86545) at 1 µg/ml (in 5% skim milk / PBS buffer) + transfected 293T cell lysate at 10 µg

### Secondary

HRP conjugated anti-Rabbit IgG at 1/50000 dilution

**Predicted band size:** 47 kDa

**Observed band size:** 47 kDa

**Additional bands at:** 28 kDa. We are unsure as to the identity of these extra bands.

Gel concentration: 12%

**Please note:** All products are "FOR RESEARCH USE ONLY AND ARE NOT INTENDED FOR DIAGNOSTIC OR THERAPEUTIC USE"

**Our Abpromise to you: Quality guaranteed and expert technical support**

- Replacement or refund for products not performing as stated on the datasheet
- Valid for 12 months from date of delivery
- Response to your inquiry within 24 hours
  
- We provide support in Chinese, English, French, German, Japanese and Spanish
- Extensive multi-media technical resources to help you
- We investigate all quality concerns to ensure our products perform to the highest standards

If the product does not perform as described on this datasheet, we will offer a refund or replacement. For full details of the Abpromise, please visit <http://www.abcam.com/abpromise> or contact our technical team.

### **Terms and conditions**

---

- Guarantee only valid for products bought direct from Abcam or one of our authorized distributors