

Product datasheet

Anti-DDX43 antibody ab86596

[1 References](#) [2 Images](#)

Overview

Product name	Anti-DDX43 antibody
Description	Rabbit polyclonal to DDX43
Host species	Rabbit
Tested applications	Suitable for: WB, IP
Species reactivity	Reacts with: Human Predicted to work with: Chimpanzee, Gorilla, Orangutan
Immunogen	Synthetic peptide corresponding to a region within the amino acids 125-175 (KAVIDNFVKK LEENYNSECG IDTAFQPSVG KDGSTDNNVV AGDRPLIDWD Q) of Human DDX43, Swiss Prot Q9NXZ2. Run BLAST with ExPASy Run BLAST with NCBI
Positive control	Whole cell lysate from HeLa cells.

Properties

Form	Liquid
Storage instructions	Shipped at 4°C. Upon delivery aliquot and store at -20°C. Avoid freeze / thaw cycles.
Storage buffer	Preservative: 0.09% Sodium Azide Constituents: Tris buffered saline, pH 7-8
Purity	Immunogen affinity purified
Clonality	Polyclonal
Isotype	IgG

Applications

Our [Abpromise guarantee](#) covers the use of **ab86596** in the following tested applications.

The application notes include recommended starting dilutions; optimal dilutions/concentrations should be determined by the end user.

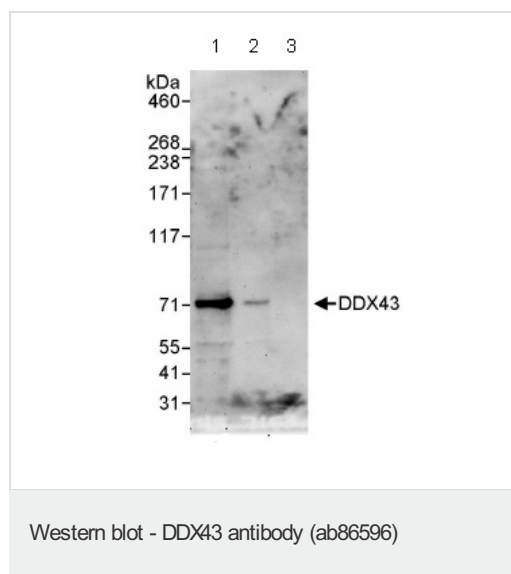
Application	Abreviews	Notes
WB		1/1000 - 1/5000. Detects a band of approximately 71 kDa (predicted molecular weight: 73 kDa).

Application	Abreviews	Notes
IP		Use at 10 µg/mg of lysate.

Target

Tissue specificity	Expressed in testis. Expressed in many tumors of various histological types at a level that is 100-fold higher than the level observed in normal tissues except testis.
Sequence similarities	Belongs to the DEAD box helicase family. Contains 1 helicase ATP-binding domain. Contains 1 helicase C-terminal domain. Contains 1 KH domain.

Images



All lanes : Anti-DDX43 antibody (ab86596) at 0.4 µg/ml

Lane 1 : Whole cell lysate from HeLa cells at 50 µg

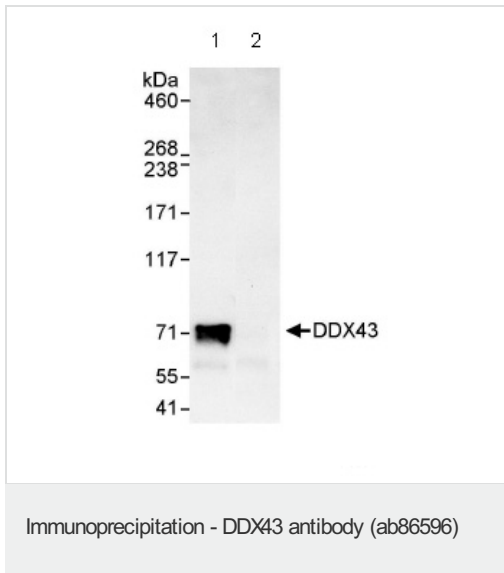
Lane 2 : Whole cell lysate from HeLa cells at 15 µg

Lane 3 : Whole cell lysate from HeLa cells at 5 µg

Predicted band size: 73 kDa

Observed band size: 71 kDa

Exposure time: 3 minutes



Immunoprecipitation/ Western Blot of ab86596

Lane 1: ab86596 at 10 μ g/mg whole cell lysate.

Lane 2: Control IgG.

ab86596 at 1 μ g/ml for WB.

Whole cell lysate from HeLa cells at 1mg for IP, 20% of IP loaded.

Chemiluminescence with an exposure time of 30 seconds.

Please note: All products are "FOR RESEARCH USE ONLY AND ARE NOT INTENDED FOR DIAGNOSTIC OR THERAPEUTIC USE"

Our Abpromise to you: Quality guaranteed and expert technical support

- Replacement or refund for products not performing as stated on the datasheet
- Valid for 12 months from date of delivery
- Response to your inquiry within 24 hours
- We provide support in Chinese, English, French, German, Japanese and Spanish
- Extensive multi-media technical resources to help you
- We investigate all quality concerns to ensure our products perform to the highest standards

If the product does not perform as described on this datasheet, we will offer a refund or replacement. For full details of the Abpromise, please visit <http://www.abcam.com/abpromise> or contact our technical team.

Terms and conditions

- Guarantee only valid for products bought direct from Abcam or one of our authorized distributors