

Product datasheet

Anti-PPP1A antibody ab87017

1 Image

Overview

Product name	Anti-PPP1A antibody
Description	Rabbit polyclonal to PPP1A
Tested applications	Suitable for: WB
Species reactivity	Reacts with: Human Predicted to work with: Mouse, Rat, Rabbit, Guinea pig, Cow, Dog, Pig
Immunogen	Synthetic peptide corresponding to a region within N terminal amino acids 2-51 (SDSEKLNLDSD IIGRLLEGSR VLTPHCAPVQ GSRPGKNVQL TENEIRGLCL) of Human PPP1A (NP_001008709). Run BLAST with ExPASy Run BLAST with NCBI
Positive control	Jurkat cell lysate.

Properties

Form	Liquid
Storage instructions	Shipped at 4°C. Upon delivery aliquot and store at -20°C. Avoid repeated freeze / thaw cycles.
Storage buffer	Preservative: None Constituents: 2% Sucrose, PBS
Purity	Immunogen affinity purified
Clonality	Polyclonal
Isotype	IgG

Applications

Our [Abpromise guarantee](#) covers the use of **ab87017** in the following tested applications.

The application notes include recommended starting dilutions; optimal dilutions/concentrations should be determined by the end user.

Application	Abreviews	Notes
WB		Use a concentration of 1 µg/ml. Detects a band of approximately 38 kDa (predicted molecular weight: 38 kDa). Good results were obtained when blocked with 5% non-fat dry milk in 0.05% PBS-T.

Target

Function

Protein phosphatase 1 (PP1) is essential for cell division, and participates in the regulation of glycogen metabolism, muscle contractility and protein synthesis. Involved in regulation of ionic conductances and long-term synaptic plasticity. May play an important role in dephosphorylating substrates such as the postsynaptic density-associated Ca(2+)/calmodulin dependent protein kinase II. Component of the PTW/PP1 phosphatase complex, which plays a role in the control of chromatin structure and cell cycle progression during the transition from mitosis into interphase.

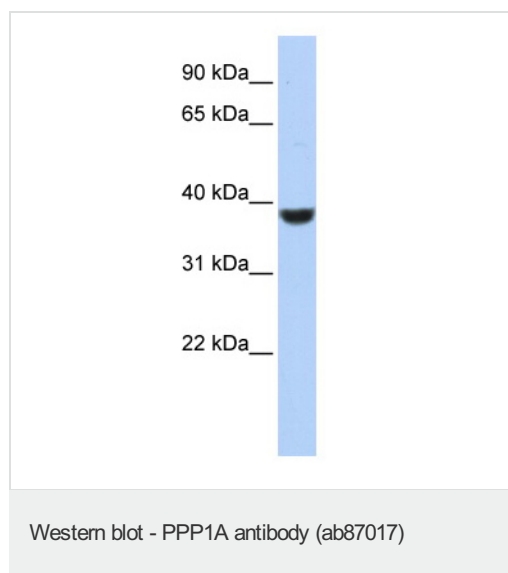
Sequence similarities

Belongs to the PPP phosphatase family. PP-1 subfamily.

Cellular localization

Cytoplasm. Nucleus. Nucleus > nucleoplasm. Nucleus > nucleolus. Primarily nuclear and largely excluded from the nucleolus. Highly mobile in cells and can be relocalized through interaction with targeting subunits. NOM1 plays a role in targeting this protein to the nucleolus. In the presence of PPP1R8 relocalizes from the nucleus to nuclear speckles.

Images



Anti-PPP1A antibody (ab87017) at 1 µg/ml (in 5% skim milk / PBS buffer) + Jurkat cell lysate at 10 µg

Secondary

HRP conjugated anti-Rabbit IgG at 1/50000 dilution

Predicted band size : 38 kDa

Observed band size : 38 kDa

Please note: All products are "FOR RESEARCH USE ONLY AND ARE NOT INTENDED FOR DIAGNOSTIC OR THERAPEUTIC USE"

Our Abpromise to you: Quality guaranteed and expert technical support

- Replacement or refund for products not performing as stated on the datasheet
- Valid for 12 months from date of delivery
- Response to your inquiry within 24 hours
- We provide support in Chinese, English, French, German, Japanese and Spanish
- Extensive multi-media technical resources to help you
- We investigate all quality concerns to ensure our products perform to the highest standards

If the product does not perform as described on this datasheet, we will offer a refund or replacement. For full details of the Abpromise, please visit <http://www.abcam.com/abpromise> or contact our technical team.

Terms and conditions

- Guarantee only valid for products bought direct from Abcam or one of our authorized distributors