

Product datasheet

Anti-Otx1 antibody ab87112

1 Image

Overview

Product name	Anti-Otx1 antibody
Description	Rabbit polyclonal to Otx1
Host species	Rabbit
Tested applications	Suitable for: WB
Species reactivity	Reacts with: Human Predicted to work with: Mouse, Rat, Sheep, Rabbit, Horse, Chicken, Guinea pig, Cow, Cat, Dog, Caenorhabditis elegans, Drosophila melanogaster, Zebrafish
Immunogen	Synthetic peptide corresponding to a region within N terminal amino acids 36-85 (RKQRRERTTF TRSQLDVLEA LFAKTRYPDI FMREEVALKI NLPESRVQVW) of human Otx1 (NP_055377). Run BLAST with ExPASy Run BLAST with NCBI
Positive control	Transfected 293T cell lysate

Properties

Form	Liquid
Storage instructions	Shipped at 4°C. Upon delivery aliquot and store at -20°C. Avoid repeated freeze / thaw cycles.
Storage buffer	Preservative: None Constituents: 2% Sucrose, PBS
Purity	Immunogen affinity purified
Purification notes	Purified by peptide affinity chromatography method.
Clonality	Polyclonal
Isotype	IgG

Applications

Our [Abpromise guarantee](#) covers the use of **ab87112** in the following tested applications.

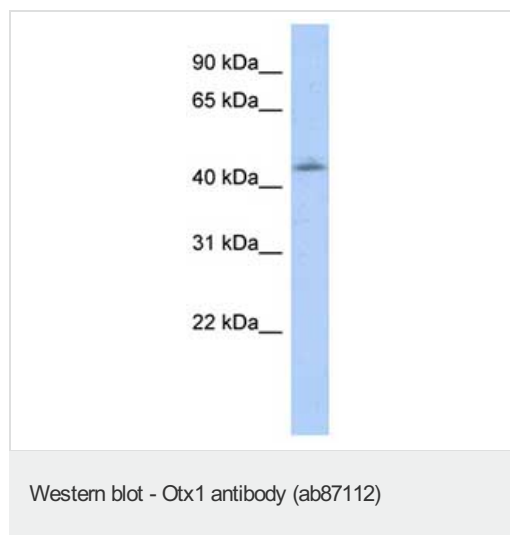
The application notes include recommended starting dilutions; optimal dilutions/concentrations should be determined by the end user.

Application	Abreviews	Notes
WB		Use a concentration of 1 µg/ml. Predicted molecular weight: 37 kDa. Good results were obtained when blocked with 5% non-fat dry milk in 0.05% PBS-T.

Target

Function	Probably plays a role in the development of the brain and the sense organs. Can bind to the BCD target sequence (BTS): 5'-TCTAATCCC-3'.
Tissue specificity	Expressed in brain.
Sequence similarities	Belongs to the paired homeobox family. Bicoid subfamily. Contains 1 homeobox DNA-binding domain.
Developmental stage	Embryo.
Cellular localization	Nucleus.

Images



Anti-Otx1 antibody (ab87112) at 1 µg/ml (in 5% skim milk / PBS buffer) + transfected 293T cell lysate at 10 µg

Secondary

HRP conjugated anti-Rabbit IgG at 1/50000 dilution

Predicted band size: 37 kDa

Observed band size: 45 kDa

Gel concentration: 12%

Please note: All products are "FOR RESEARCH USE ONLY AND ARE NOT INTENDED FOR DIAGNOSTIC OR THERAPEUTIC USE"

Our Abpromise to you: Quality guaranteed and expert technical support

- Replacement or refund for products not performing as stated on the datasheet
- Valid for 12 months from date of delivery
- Response to your inquiry within 24 hours
- We provide support in Chinese, English, French, German, Japanese and Spanish
- Extensive multi-media technical resources to help you
- We investigate all quality concerns to ensure our products perform to the highest standards

If the product does not perform as described on this datasheet, we will offer a refund or replacement. For full details of the Abpromise, please visit <http://www.abcam.com/abpromise> or contact our technical team.

Terms and conditions

- Guarantee only valid for products bought direct from Abcam or one of our authorized distributors