

Product datasheet

Anti-ZNF513 antibody ab87552

1 Image

Overview

Product name	Anti-ZNF513 antibody
Description	Rabbit polyclonal to ZNF513
Host species	Rabbit
Tested applications	Suitable for: WB
Species reactivity	Reacts with: Human Predicted to work with: Mouse, Rat, Rabbit, Horse, Chicken, Guinea pig, Cow, Cat, Dog, Zebrafish
Immunogen	Synthetic peptide corresponding to a region within the internal sequence amino acids 468-517 (GEKPFRCATCAYTTGHWDNYKRHQKVHGHGGAGGPGLSASEGWAPPHSPP) of Human ZNF513 (NP_653232). <div style="text-align: right;"> Run BLAST with Run BLAST with </div>
Positive control	HT1080 cell lysate

Properties

Form	Liquid
Storage instructions	Shipped at 4°C. Upon delivery aliquot and store at -20°C. Avoid freeze / thaw cycles.
Storage buffer	Preservative: None Constituents: 2% Sucrose, PBS
Purity	Immunogen affinity purified
Clonality	Polyclonal
Isotype	IgG

Applications

Our [Abpromise guarantee](#) covers the use of **ab87552** in the following tested applications.

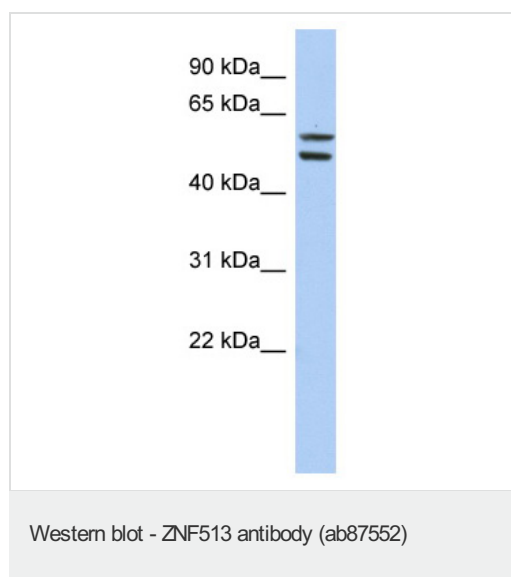
The application notes include recommended starting dilutions; optimal dilutions/concentrations should be determined by the end user.

Application	Abreviews	Notes
WB		Use a concentration of 1 µg/ml. Predicted molecular weight: 58 kDa. Good results were obtained when blocked with 5% non-fat dry milk in 0.05% PBS-T.

Target

Function	Transcriptional regulator that plays a role in retinal development and maintenance.
Tissue specificity	In the retina, expressed in the outer and inner nuclear layers, and the ganglion cell layer.
Involvement in disease	Defects in ZNF513 are the cause of retinitis pigmentosa type 58 (RP58) [MIM:613617]. A retinal dystrophy belonging to the group of pigmentary retinopathies. Retinitis pigmentosa is characterized by retinal pigment deposits visible on fundus examination and primary loss of rod photoreceptor cells followed by secondary loss of cone photoreceptors. Patients typically have night vision blindness and loss of midperipheral visual field. As their condition progresses, they lose their far peripheral visual field and eventually central vision as well.
Sequence similarities	Belongs to the krueppel C2H2-type zinc-finger protein family. Contains 8 C2H2-type zinc fingers.
Cellular localization	Nucleus.

Images



Anti-ZNF513 antibody (ab87552) at 1 µg/ml +
HT1080 cell lysate at 10 µg

Secondary

HRP conjugated anti-Rabbit IgG at 1/50000
dilution

Predicted band size: 58 kDa

Observed band size: 58 kDa

Additional bands at: 51 kDa (possible
isoform)

Gel concentration: 12%

Please note: All products are "FOR RESEARCH USE ONLY AND ARE NOT INTENDED FOR DIAGNOSTIC OR THERAPEUTIC USE"

Our Abpromise to you: Quality guaranteed and expert technical support

- Replacement or refund for products not performing as stated on the datasheet
- Valid for 12 months from date of delivery

- Response to your inquiry within 24 hours
- We provide support in Chinese, English, French, German, Japanese and Spanish
- Extensive multi-media technical resources to help you
- We investigate all quality concerns to ensure our products perform to the highest standards

If the product does not perform as described on this datasheet, we will offer a refund or replacement. For full details of the Abpromise, please visit <http://www.abcam.com/abpromise> or contact our technical team.

Terms and conditions

- Guarantee only valid for products bought direct from Abcam or one of our authorized distributors