

## Product datasheet

# Anti-FAM3B antibody ab88142

[3 Images](#)

### Overview

---

<b>Product name</b>	Anti-FAM3B antibody
<b>Description</b>	Mouse monoclonal to FAM3B
<b>Host species</b>	Mouse
<b>Tested applications</b>	<b>Suitable for:</b> WB, ELISA
<b>Species reactivity</b>	<b>Reacts with:</b> Human
<b>Immunogen</b>	Recombinant full length Human protein (AAH57829), with a proprietary tag

**Positive control**

[Purchase matching WB positive control:  
Recombinant Human FAM3B protein](#) >

Human kidney tissue lysate; FAM3B-transfected 293T cell lysate.

### Properties

---

<b>Form</b>	Liquid
<b>Storage instructions</b>	Shipped at 4°C. Upon delivery aliquot and store at -20°C or -80°C. Avoid repeated freeze / thaw cycles.
<b>Storage buffer</b>	Preservative: None Constituents: PBS, pH 7.2
<b>Purity</b>	Protein A purified
<b>Clonality</b>	Monoclonal
<b>Isotype</b>	IgG1
<b>Light chain type</b>	kappa

### Applications

---

Our [Abpromise guarantee](#) covers the use of **ab88142** in the following tested applications.

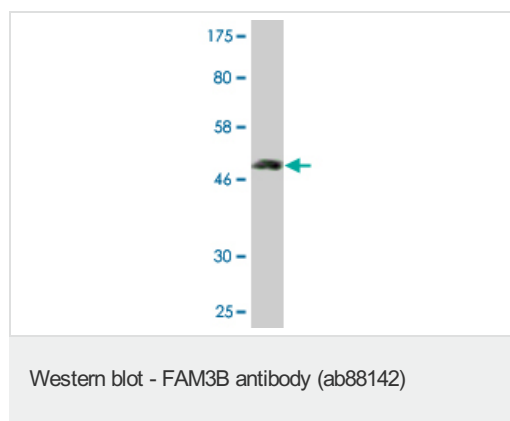
The application notes include recommended starting dilutions; optimal dilutions/concentrations should be determined by the end user.

Application	Abreviews	Notes
WB		Use a concentration of 1 - 5 µg/ml. Predicted molecular weight: 26 kDa.
ELISA		Use at an assay dependent dilution.

## Target

<b>Function</b>	Induces apoptosis of alpha and beta cells in a dose- and time-dependent manner. Present in insulin secretory granules and likely cosecreted with insulin.
<b>Tissue specificity</b>	Highly expressed in the pancreas. Also found in the colon, kidney, prostate, small intestine and testis.
<b>Sequence similarities</b>	Belongs to the FAM3 family.
<b>Post-translational modifications</b>	2 N-termini have been observed in the mature protein: the first at Glu-30, resulting from signal peptide cleavage, the second at Ser-46.
<b>Cellular localization</b>	Secreted. Localized in discrete vesicular and perinuclear structure.

## Images

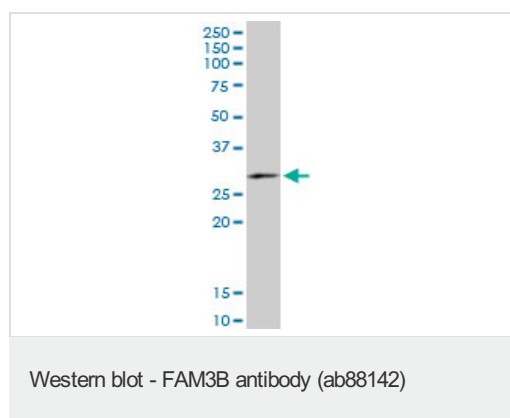


Anti-FAM3B antibody (ab88142) at 1 µg/ml + immunogen (recombinant full length protein with proprietary tag of 26kDa) at 0.2 µg

### Secondary

Goat anti-Mouse IgG at 1/5000 dilution

**Predicted band size:** 26 kDa

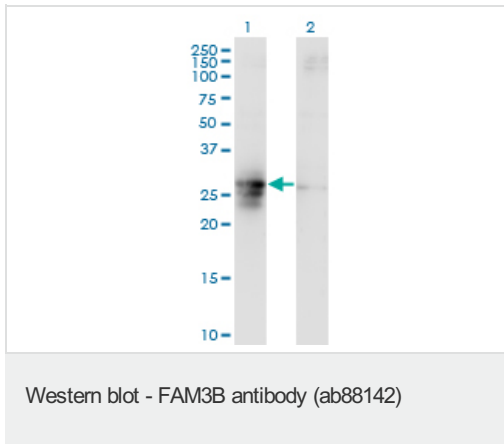


Anti-FAM3B antibody (ab88142) at 5 µg/ml + Human kidney tissue lysate at 25 µg

### Secondary

Goat anti-Mouse IgG at 1/2500 dilution

**Predicted band size:** 26 kDa



**All lanes :** Anti-FAM3B antibody (ab88142)

at 5 µg/ml

**Lane 1 :** FAM3B-transfected 293T cell lysate

**Lane 2 :** Non-transfected 293T cell lysate

Lysates/proteins at 25 µg per lane.

#### **Secondary**

**Lane 1 :** Goat anti-Mouse IgG at 1/2500 dilution

**Lane 2 :** Goat anti-Mouse IgG at 1/2500 dilution

**Predicted band size:** 26 kDa

**Please note:** All products are "FOR RESEARCH USE ONLY AND ARE NOT INTENDED FOR DIAGNOSTIC OR THERAPEUTIC USE"

#### **Our Abpromise to you: Quality guaranteed and expert technical support**

- Replacement or refund for products not performing as stated on the datasheet
- Valid for 12 months from date of delivery
- Response to your inquiry within 24 hours
- We provide support in Chinese, English, French, German, Japanese and Spanish
- Extensive multi-media technical resources to help you
- We investigate all quality concerns to ensure our products perform to the highest standards

If the product does not perform as described on this datasheet, we will offer a refund or replacement. For full details of the Abpromise, please visit <http://www.abcam.com/abpromise> or contact our technical team.

#### **Terms and conditions**

- Guarantee only valid for products bought direct from Abcam or one of our authorized distributors