

Product datasheet

Anti-CCNDBP1 antibody ab88380

2 Images

Overview

<b>Product name</b>	Anti-CCNDBP1 antibody
<b>Description</b>	Mouse polyclonal to CCNDBP1
<b>Tested applications</b>	<b>Suitable for:</b> WB
<b>Species reactivity</b>	<b>Reacts with:</b> Human
<b>Immunogen</b>	Full length Human CCNDBP1 protein (AAH09689.1)
<b>Positive control</b>	K562 cell lysate. CCNDBP1 transfected 293T cell lysate.

Properties

<b>Form</b>	Liquid
<b>Storage instructions</b>	Shipped at 4°C. Upon delivery aliquot and store at -20°C or -80°C. Avoid repeated freeze / thaw cycles.
<b>Storage buffer</b>	Preservative: None Constituents: 1X PBS, pH 7.2
<b>Purity</b>	Protein A purified
<b>Clonality</b>	Polyclonal
<b>Isotype</b>	IgG

Applications

Our [Abpromise guarantee](#) covers the use of **ab88380** in the following tested applications.

The application notes include recommended starting dilutions; optimal dilutions/concentrations should be determined by the end user.

Application	Abreviews	Notes
WB		Use a concentration of 1 µg/ml. Predicted molecular weight: 40 kDa.

Target

**Function** May negatively regulate cell cycle progression. May act at least in part via inhibition of the cyclin-

D1/CDK4 complex, thereby preventing phosphorylation of RB1 and blocking E2F-dependent transcription.

**Tissue specificity**

Ubiquitously expressed. Expression is down-regulated in a variety of tumor types including breast, colon, prostate and rectal tumors, and is up-regulated in certain hepatic carcinomas.

**Sequence similarities**

Belongs to the CCNDBP1 family.

**Developmental stage**

Expression may increase during differentiation.

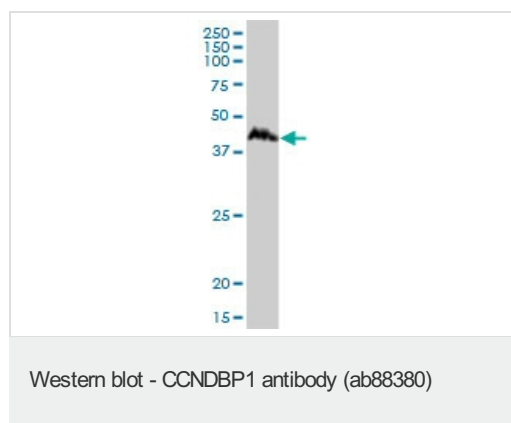
**Post-translational modifications**

Phosphorylated.

**Cellular localization**

Cytoplasm. Nucleus.

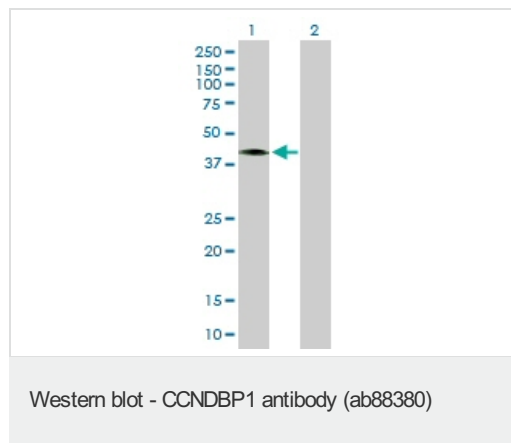
**Images**



Anti-CCNDBP1 antibody (ab88380) at 1  $\mu\text{g/ml}$  + K562 cell lysate at 50  $\mu\text{g}$

**Predicted band size :** 40 kDa

**Observed band size :** 40 kDa



**All lanes :** Anti-CCNDBP1 antibody (ab88380) at 1  $\mu\text{g/ml}$

**Lane 1 :** CCNDBP1 transfected 293T cell lysate

**Lane 2 :** Non-transfected 293T cell lysate

Lysates/proteins at 25  $\mu\text{g}$  per lane.

**Predicted band size :** 40 kDa

**Observed band size :** 40 kDa

**Please note:** All products are "FOR RESEARCH USE ONLY AND ARE NOT INTENDED FOR DIAGNOSTIC OR THERAPEUTIC USE"

**Our Abpromise to you: Quality guaranteed and expert technical support**

- Replacement or refund for products not performing as stated on the datasheet
- Valid for 12 months from date of delivery
- Response to your inquiry within 24 hours

- We provide support in Chinese, English, French, German, Japanese and Spanish
- Extensive multi-media technical resources to help you
- We investigate all quality concerns to ensure our products perform to the highest standards

If the product does not perform as described on this datasheet, we will offer a refund or replacement. For full details of the Abpromise, please visit <http://www.abcam.com/abpromise> or contact our technical team.

### **Terms and conditions**

---

- Guarantee only valid for products bought direct from Abcam or one of our authorized distributors