

## Product datasheet

# Anti-NAP1L1 antibody ab88580

[3 Images](#)

### Overview

<b>Product name</b>	Anti-NAP1L1 antibody
<b>Description</b>	Mouse polyclonal to NAP1L1
<b>Host species</b>	Mouse
<b>Tested applications</b>	<b>Suitable for:</b> WB, ICC/IF
<b>Species reactivity</b>	<b>Reacts with:</b> Human
<b>Immunogen</b>	Full length Human NAP1L1 (NP_004528.1, 1-391aa).
<b>Positive control</b>	NAP1L1 transfected 293T cell lysate, HeLa cells and cell lysate.

### Properties

<b>Form</b>	Liquid
<b>Storage instructions</b>	Shipped at 4°C. Upon delivery aliquot and store at -20°C or -80°C. Avoid repeated freeze / thaw cycles.
<b>Storage buffer</b>	Preservative: None Constituents: 1X PBS, pH 7.2
<b>Purity</b>	Protein A purified
<b>Clonality</b>	Polyclonal
<b>Isotype</b>	IgG

### Applications

Our [Abpromise guarantee](#) covers the use of **ab88580** in the following tested applications.

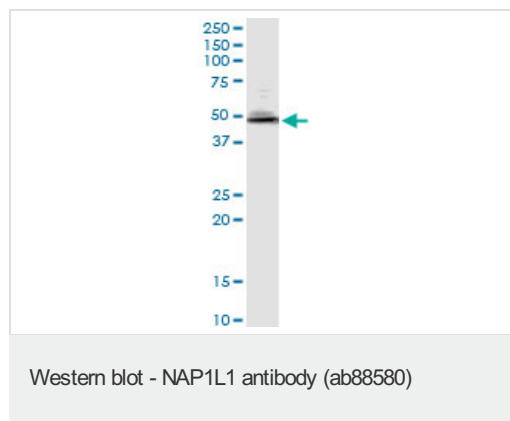
The application notes include recommended starting dilutions; optimal dilutions/concentrations should be determined by the end user.

Application	Abreviews	Notes
WB		Use a concentration of 1 µg/ml. Predicted molecular weight: 45 kDa.
ICC/IF		Use a concentration of 10 µg/ml.

## Target

<b>Function</b>	May be involved in modulating chromatin formation and contribute to regulation of cell proliferation.
<b>Tissue specificity</b>	Ubiquitously expressed.
<b>Sequence similarities</b>	Belongs to the nucleosome assembly protein (NAP) family.
<b>Domain</b>	The acidic domains are probably involved in the interaction with histones.
<b>Post-translational modifications</b>	Polyglutamylated by TLL4, a modification that occurs exclusively on glutamate residues and results in polyglutamate chains on the gamma-carboxyl group. Some residues may also be monoglycylated but not polyglycylated due to the absence of functional TLL10 in human.
<b>Cellular localization</b>	Nucleus. Melanosome. Identified by mass spectrometry in melanosome fractions from stage I to stage IV.

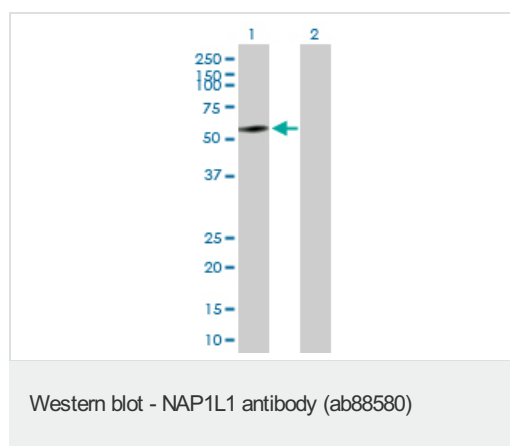
## Images



Anti-NAP1L1 antibody (ab88580) at 1  $\mu$ g/ml +  
HeLa cell lysate at 50  $\mu$ g

**Predicted band size:** 45 kDa

**Observed band size:** 48 kDa



**All lanes :** Anti-NAP1L1 antibody (ab88580)  
at 1  $\mu$ g/ml

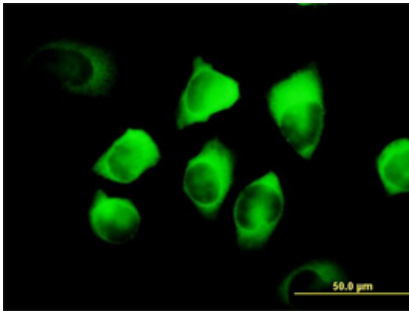
**Lane 1 :** NAP1L1 transfected 293T cell lysate

**Lane 2 :** Non-transfected 293T cell lysate

Lysates/proteins at 25  $\mu$ g per lane.

**Predicted band size:** 45 kDa

**Observed band size:** 55 kDa



ab88580 at 10μg/ml staining NAP1L1 in HeLa cells by Immunofluorescence.

Immunocytochemistry/ Immunofluorescence -  
NAP1L1 antibody (ab88580)

**Please note:** All products are "FOR RESEARCH USE ONLY AND ARE NOT INTENDED FOR DIAGNOSTIC OR THERAPEUTIC USE"

### Our Abpromise to you: Quality guaranteed and expert technical support

- Replacement or refund for products not performing as stated on the datasheet
- Valid for 12 months from date of delivery
- Response to your inquiry within 24 hours
- We provide support in Chinese, English, French, German, Japanese and Spanish
- Extensive multi-media technical resources to help you
- We investigate all quality concerns to ensure our products perform to the highest standards

If the product does not perform as described on this datasheet, we will offer a refund or replacement. For full details of the Abpromise, please visit <http://www.abcam.com/abpromise> or contact our technical team.

### Terms and conditions

- Guarantee only valid for products bought direct from Abcam or one of our authorized distributors