

## Product datasheet

# Anti-NUBP1 antibody ab88622

3 Images

### Overview

<b>Product name</b>	Anti-NUBP1 antibody
<b>Description</b>	Mouse polyclonal to NUBP1
<b>Tested applications</b>	<b>Suitable for:</b> WB, ICC/IF
<b>Species reactivity</b>	<b>Reacts with:</b> Human
<b>Immunogen</b>	Full length protein, corresponding to amino acids 1-320 of Human NUBP1 (NP_002475.2)
<b>Positive control</b>	COLO 320 HSR HeLa cell

### Properties

<b>Form</b>	Liquid
<b>Storage instructions</b>	Shipped at 4°C. Upon delivery aliquot and store at -20°C or -80°C. Avoid repeated freeze / thaw cycles.
<b>Storage buffer</b>	Preservative: None Constituents: 1X PBS, pH 7.2
<b>Purity</b>	Protein A purified
<b>Clonality</b>	Polyclonal
<b>Isotype</b>	IgG

### Applications

Our [Abpromise guarantee](#) covers the use of **ab88622** in the following tested applications.

The application notes include recommended starting dilutions; optimal dilutions/concentrations should be determined by the end user.

Application	Abreviews	Notes
WB		Use a concentration of 1 µg/ml. Predicted molecular weight: 35 kDa.
ICC/IF		Use a concentration of 10 µg/ml.

### Target

## Function

Implicated in the regulation of centrosome duplication (By similarity). Component of the cytosolic iron-sulfur (Fe/S) protein assembly machinery. Required for maturation of extramitochondrial Fe/S proteins. May bind and transfer 2 labile 4Fe-4S clusters to target apoproteins.

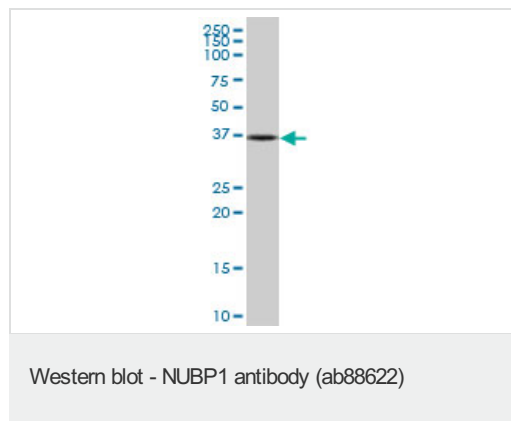
## Sequence similarities

Belongs to the Mrp/NBP35 ATP-binding proteins family. NUBP1/NBP35 subfamily.

## Cellular localization

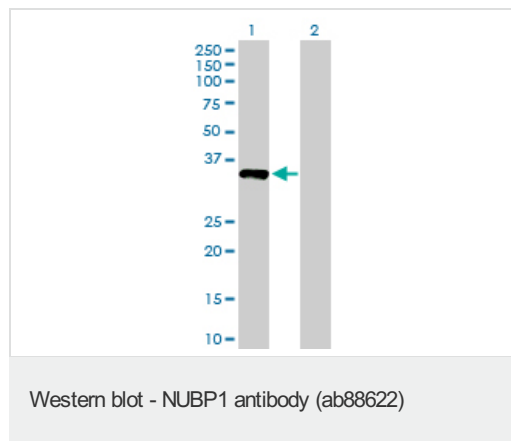
Cytoplasm.

## Images



Anti-NUBP1 antibody (ab88622) at 1  $\mu$ g/ml +  
COLO 320 HSR at 50  $\mu$ g

**Predicted band size** : 35 kDa

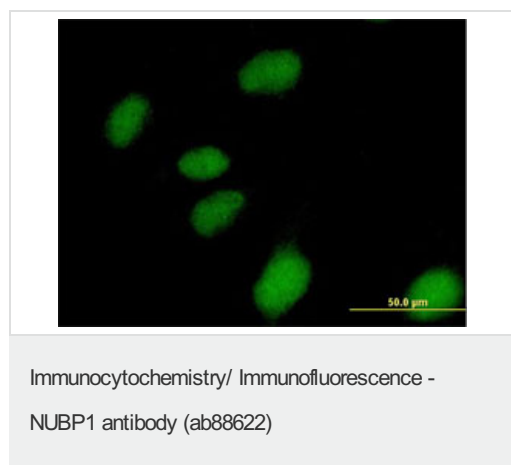


**All lanes** : Anti-NUBP1 antibody (ab88622) at  
1  $\mu$ g/ml

**Lane 1** : Transfected 293T cell line lysate at  
25  $\mu$ g

**Lane 2** : Non-transfected 293T cell line lysate  
at 25  $\mu$ g/ml

**Predicted band size** : 35 kDa



ab88622 at 10 $\mu$ g/ml staining NUBP1 in HeLa  
cell by Immunofluorescence.

**Please note:** All products are "FOR RESEARCH USE ONLY AND ARE NOT INTENDED FOR DIAGNOSTIC OR THERAPEUTIC USE"

## **Our Abpromise to you: Quality guaranteed and expert technical support**

---

- Replacement or refund for products not performing as stated on the datasheet
- Valid for 12 months from date of delivery
- Response to your inquiry within 24 hours
  
- We provide support in Chinese, English, French, German, Japanese and Spanish
- Extensive multi-media technical resources to help you
- We investigate all quality concerns to ensure our products perform to the highest standards

If the product does not perform as described on this datasheet, we will offer a refund or replacement. For full details of the Abpromise, please visit <http://www.abcam.com/abpromise> or contact our technical team.

## **Terms and conditions**

---

- Guarantee only valid for products bought direct from Abcam or one of our authorized distributors