

## Product datasheet

# Anti-Phosphoglucomutase 5 antibody ab88781

[2 Images](#)

### Overview

<b>Product name</b>	Anti-Phosphoglucomutase 5 antibody
<b>Description</b>	Mouse polyclonal to Phosphoglucomutase 5
<b>Host species</b>	Mouse
<b>Tested applications</b>	<b>Suitable for:</b> WB
<b>Species reactivity</b>	<b>Reacts with:</b> Human
<b>Immunogen</b>	Full length Human protein (ENSP00000366540)
<b>Positive control</b>	Kidney lysate

### Properties

<b>Form</b>	Liquid
<b>Storage instructions</b>	Shipped at 4°C. Upon delivery aliquot and store at -20°C or -80°C. Avoid repeated freeze / thaw cycles.
<b>Storage buffer</b>	Preservative: None Constituents: 1X PBS, pH 7.2
<b>Purity</b>	Protein A purified
<b>Clonality</b>	Polyclonal
<b>Isotype</b>	IgG

### Applications

Our [Abpromise guarantee](#) covers the use of **ab88781** in the following tested applications.

The application notes include recommended starting dilutions; optimal dilutions/concentrations should be determined by the end user.

Application	Abreviews	Notes
WB		Use a concentration of 1 µg/ml. Predicted molecular weight: 62 kDa.

### Target

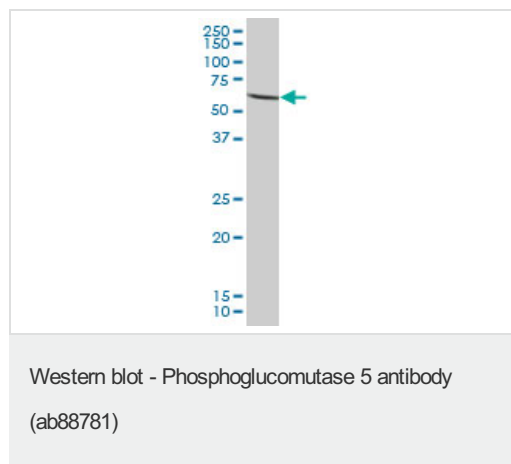
## Relevance

Phosphoglucomutase 5 is a phosphotransferase involved in the interconversion of glucose 1 phosphate and glucose 6 phosphate. This activity is essential in formation of carbohydrates from glucose 6 phosphate and in formation of glucose 6 phosphate from galactose and glycogen.

## Cellular localization

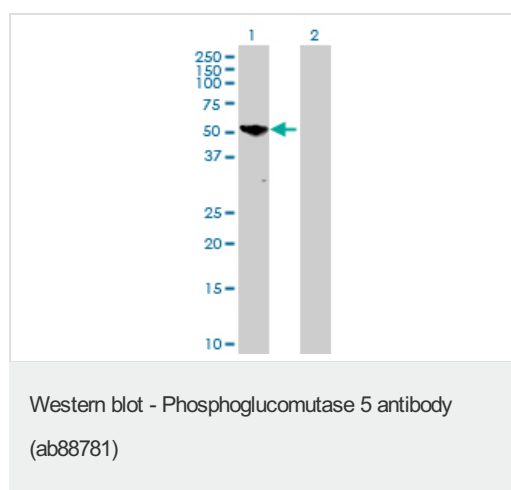
Cell junction, adherens junction.

## Images



Anti-Phosphoglucomutase 5 antibody (ab88781) at 1 µg/ml + Human kidney lysate at 50 µg

**Predicted band size:** 62 kDa



**All lanes :** Anti-Phosphoglucomutase 5 antibody (ab88781) at 1 µg/ml

**Lane 1 :** Phosphoglucomutase 5 transfected 293T cell lysate

**Lane 2 :** untransfected lysate

Lysates/proteins at 25 µg per lane.

**Predicted band size:** 62 kDa

**Observed band size:** 55 kDa

**Please note:** All products are "FOR RESEARCH USE ONLY AND ARE NOT INTENDED FOR DIAGNOSTIC OR THERAPEUTIC USE"

## Our Abpromise to you: Quality guaranteed and expert technical support

- Replacement or refund for products not performing as stated on the datasheet
- Valid for 12 months from date of delivery
- Response to your inquiry within 24 hours
- We provide support in Chinese, English, French, German, Japanese and Spanish
- Extensive multi-media technical resources to help you
- We investigate all quality concerns to ensure our products perform to the highest standards

If the product does not perform as described on this datasheet, we will offer a refund or replacement. For full details of the Abpromise,

please visit <http://www.abcam.com/abpromise> or contact our technical team.

## **Terms and conditions**

---

- Guarantee only valid for products bought direct from Abcam or one of our authorized distributors