

Product datasheet

Anti-CLLD8/SETDB2 antibody ab89173

2 Images

Overview

Product name	Anti-CLLD8/SETDB2 antibody
Description	Mouse monoclonal to CLLD8/SETDB2
Host species	Mouse
Tested applications	Suitable for: WB, ELISA
Species reactivity	Reacts with: Human
Immunogen	Recombinant fragment corresponding to Human CLLD8/SETDB2 aa 451-551. Database link: Q96T68
Positive control	The immunogen; A-431 cell lysate

Properties

Form	Liquid
Storage instructions	Shipped at 4°C. Upon delivery aliquot and store at -20°C or -80°C. Avoid repeated freeze / thaw cycles.
Storage buffer	Preservative: None Constituents: 1X PBS, pH 7.2
Purity	Protein A purified
Clonality	Monoclonal
Isotype	IgG2a
Light chain type	kappa

Applications

Our [Abpromise guarantee](#) covers the use of **ab89173** in the following tested applications.

The application notes include recommended starting dilutions; optimal dilutions/concentrations should be determined by the end user.

Application	Abreviews	Notes
WB		Use a concentration of 1 - 5 µg/ml. Predicted molecular weight: 82 kDa.
ELISA		Use at an assay dependent dilution.

Target

Function

Histone methyltransferase involved in left-right axis specification in early development and mitosis. Specifically trimethylates 'Lys-9' of histone H3 (H3K9me3). H3K9me3 is a specific tag for epigenetic transcriptional repression that recruits HP1 (CBX1, CBX3 and/or CBX5) proteins to methylated histones. Contributes to H3K9me3 in both the interspersed repetitive elements and centromere-associated repeats. Plays a role in chromosome condensation and segregation during mitosis.

Tissue specificity

Ubiquitous. Highest expression in heart, testis and ovary.

Sequence similarities

Belongs to the histone-lysine methyltransferase family.

Contains 1 MBD (methyl-CpG-binding) domain.

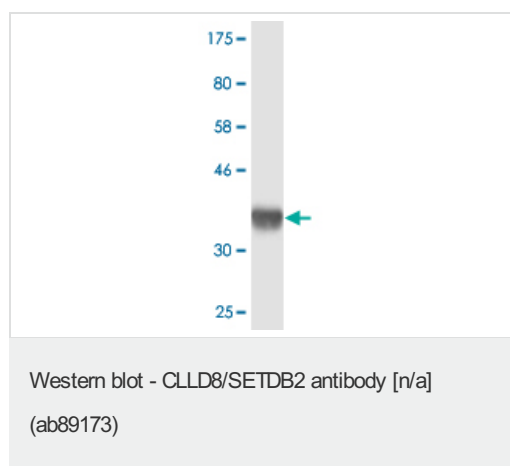
Contains 1 pre-SET domain.

Contains 1 SET domain.

Cellular localization

Nucleus. Chromosome.

Images

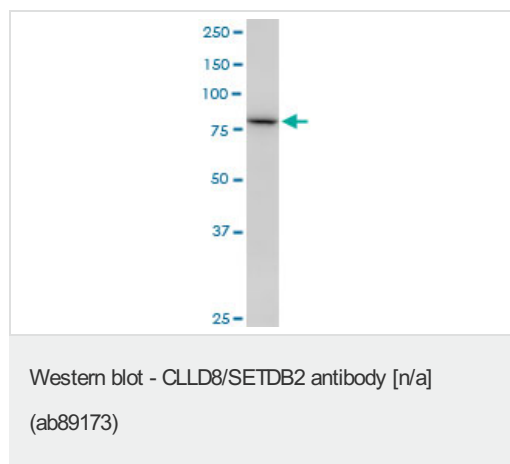


Anti-CLLD8/SETDB2 antibody (ab89173) at 5 μ g/ml + tagged, recombinant human CLLD8/SETDB2 protein fragment (the immunogen) at 0.2 μ g

Developed using the ECL technique.

Predicted band size: 82 kDa

Observed band size: 37 kDa



Anti-CLLD8/SETDB2 antibody (ab89173) at 5 μ g/ml + A-431 cell lysate at 50 μ g

Developed using the ECL technique.

Predicted band size: 82 kDa

Observed band size: 80 kDa

Please note: All products are "FOR RESEARCH USE ONLY AND ARE NOT INTENDED FOR DIAGNOSTIC OR THERAPEUTIC USE"

Our Abpromise to you: Quality guaranteed and expert technical support

- Replacement or refund for products not performing as stated on the datasheet
- Valid for 12 months from date of delivery
- Response to your inquiry within 24 hours

- We provide support in Chinese, English, French, German, Japanese and Spanish
- Extensive multi-media technical resources to help you
- We investigate all quality concerns to ensure our products perform to the highest standards

If the product does not perform as described on this datasheet, we will offer a refund or replacement. For full details of the Abpromise, please visit <http://www.abcam.com/abpromise> or contact our technical team.

Terms and conditions

- Guarantee only valid for products bought direct from Abcam or one of our authorized distributors