

## Product datasheet

# Anti-EPN3 antibody ab91225

1 Image

### Overview

<b>Product name</b>	Anti-EPN3 antibody
<b>Description</b>	Rabbit polyclonal to EPN3
<b>Host species</b>	Rabbit
<b>Tested applications</b>	<b>Suitable for:</b> WB, ELISA
<b>Species reactivity</b>	<b>Reacts with:</b> Human
<b>Immunogen</b>	KLH conjugated synthetic peptide selected from the N terminal region of Human EPN3 (NP_060427).
<b>Positive control</b>	MCF-7 cell line lysate

### Properties

<b>Form</b>	Liquid
<b>Storage instructions</b>	Shipped at 4°C. Upon delivery aliquot and store at -20°C. Avoid freeze / thaw cycles.
<b>Storage buffer</b>	Preservative: 0.09% Sodium Azide Constituents: PBS
<b>Purity</b>	Ammonium Sulphate Precipitation
<b>Purification notes</b>	ab91225 is prepared by Saturated Ammonium Sulfate (SAS) precipitation followed by dialysis against PBS.
<b>Clonality</b>	Polyclonal
<b>Isotype</b>	IgG

### Applications

Our [Abpromise guarantee](#) covers the use of **ab91225** in the following tested applications.

The application notes include recommended starting dilutions; optimal dilutions/concentrations should be determined by the end user.

Application	Abreviews	Notes
WB		1/50 - 1/100. Predicted molecular weight: 68 kDa.
ELISA		1/1000.

## Target

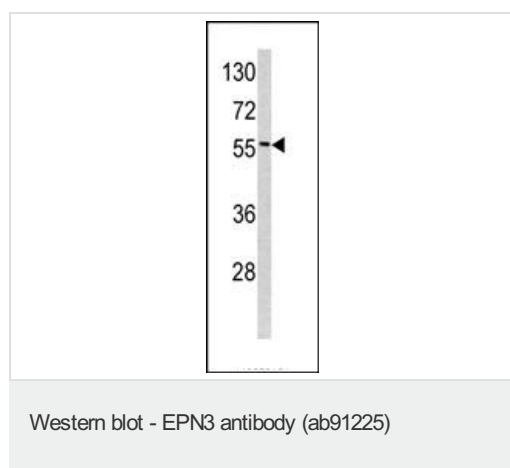
---

**Relevance** EPN3 belongs to the epsin family. It is detected in migrating keratinocytes from wounded skin, but not in differentiating keratinocytes or in normal skin. It is detected in chronic wounds, basal cell carcinoma and ulcerative colitis.

**Cellular localization** Cytoplasm. Cytoplasm; perinuclear region. Cytoplasmic vesicle; clathrin-coated vesicle. Nucleus. Note: Concentrated in the perinuclear region and associated with clathrin-coated vesicles close to the cell periphery. May shuttle to the nucleus.

## Images

---



Anti-EPN3 antibody (ab91225) at 1/50 dilution  
+ MCF-7 cell line lysate at 35 µg

**Predicted band size:** 68 kDa

**Please note:** All products are "FOR RESEARCH USE ONLY AND ARE NOT INTENDED FOR DIAGNOSTIC OR THERAPEUTIC USE"

## Our Abpromise to you: Quality guaranteed and expert technical support

---

- Replacement or refund for products not performing as stated on the datasheet
- Valid for 12 months from date of delivery
- Response to your inquiry within 24 hours
- We provide support in Chinese, English, French, German, Japanese and Spanish
- Extensive multi-media technical resources to help you
- We investigate all quality concerns to ensure our products perform to the highest standards

If the product does not perform as described on this datasheet, we will offer a refund or replacement. For full details of the Abpromise, please visit <http://www.abcam.com/abpromise> or contact our technical team.

## Terms and conditions

---

- Guarantee only valid for products bought direct from Abcam or one of our authorized distributors