

Product datasheet

Anti-PPP1R16B antibody ab92851

[1 Image](#)

Overview

Product name	Anti-PPP1R16B antibody
Description	Rabbit polyclonal to PPP1R16B
Host species	Rabbit
Tested applications	Suitable for: WB, ELISA
Species reactivity	Reacts with: Human Predicted to work with: Mouse
Immunogen	Synthesized peptide derived from internal of human PPP1R16B.
Positive control	Extracts from mouse brain cells

Properties

Form	Liquid
Storage instructions	Shipped at 4°C. Upon delivery aliquot and store at -20°C. Avoid repeated freeze / thaw cycles.
Storage buffer	Preservative: 0.02% Sodium Azide Constituents: 50% Glycerol, PBS , 150mM Sodium chloride, pH 7.4
Purity	Immunogen affinity purified
Clonality	Polyclonal
Isotype	IgG

Applications

Our [Abpromise guarantee](#) covers the use of **ab92851** in the following tested applications.

The application notes include recommended starting dilutions; optimal dilutions/concentrations should be determined by the end user.

Application	Abreviews	Notes
WB		
ELISA		

Application notes ELISA: 1/10,000.

WB: 1/500 - 1/1000. Predicted molecular weight: 64 kDa.

Not yet tested in other applications.

Optimal dilutions/concentrations should be determined by the end user.

Target

Function

Regulator of protein phosphatase 1 (PP1) that acts as a positive regulator of pulmonary endothelial cell (EC) barrier function. Involved in PKA-mediated moesin dephosphorylation which is important in EC barrier protection against thrombin stimulation. Promotes the interaction of PPP1CA with RPSA/LAMR1 and in turn facilitates the dephosphorylation of RPSA/LAMR1. Involved in the regulation of endothelial cell filopodia extension. May be a downstream target for TGF-beta1 signaling cascade in endothelial cells.

Tissue specificity

Highly expressed in vascular endothelium, CNS, lung, spleen, kidney and testis.

Sequence similarities

Contains 5 ANK repeats.

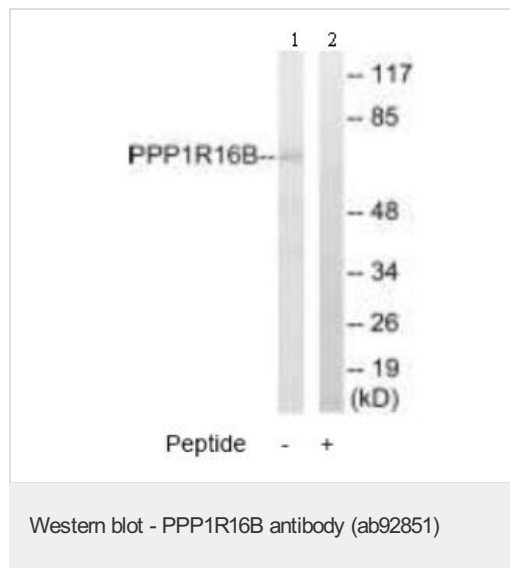
Post-translational modifications

Phosphorylated by PKA and, after PKA priming, by GSK3B. Phosphorylation by GSK3B reduces its association with PP1C and enhances PP1C activity. Dephosphorylation by its associated PP1C results in enhanced association with PP1C, but reduced PP1C activity.

Cellular localization

Cell membrane. Cell membrane. Nucleus. Co-localizes with RPSA/LAMR1 in the cell membrane.

Images



All lanes : Anti-PPP1R16B antibody (ab92851) at 1/500 dilution

Lane 1 : Extracts from mouse brain cells

Lane 2 : Extracts from mouse brain cells with immunising peptide at 10 µg

Lysates/proteins at 30 µg per lane.

Predicted band size: 64 kDa

Please note: All products are "FOR RESEARCH USE ONLY AND ARE NOT INTENDED FOR DIAGNOSTIC OR THERAPEUTIC USE"

Our Abpromise to you: Quality guaranteed and expert technical support

- Replacement or refund for products not performing as stated on the datasheet
- Valid for 12 months from date of delivery
- Response to your inquiry within 24 hours

- We provide support in Chinese, English, French, German, Japanese and Spanish
- Extensive multi-media technical resources to help you
- We investigate all quality concerns to ensure our products perform to the highest standards

If the product does not perform as described on this datasheet, we will offer a refund or replacement. For full details of the Abpromise, please visit <http://www.abcam.com/abpromise> or contact our technical team.

Terms and conditions

- Guarantee only valid for products bought direct from Abcam or one of our authorized distributors