

Product datasheet

Anti-MEK4 antibody ab92913

3 Images

Overview

<b>Product name</b>	Anti-MEK4 antibody
<b>Description</b>	Mouse polyclonal to MEK4
<b>Host species</b>	Mouse
<b>Tested applications</b>	<b>Suitable for:</b> WB, ICC/IF
<b>Species reactivity</b>	<b>Reacts with:</b> Human
<b>Immunogen</b>	Full length Human MEK4 protein (AAH36032.1).
<b>Positive control</b>	WB: Human pancreas tissue lysate, MEK4 transfected 293T cell lysate ICC/IF: HeLa cell

Properties

<b>Form</b>	Liquid
<b>Storage instructions</b>	Shipped at 4°C. Upon delivery aliquot and store at -20°C or -80°C. Avoid repeated freeze / thaw cycles.
<b>Storage buffer</b>	Preservative: None Constituents: 1X PBS, pH 7.2
<b>Purity</b>	Protein A purified
<b>Clonality</b>	Polyclonal
<b>Isotype</b>	IgG

Applications

Our [Abpromise guarantee](#) covers the use of **ab92913** in the following tested applications.

The application notes include recommended starting dilutions; optimal dilutions/concentrations should be determined by the end user.

Application	Abreviews	Notes
-------------	-----------	-------

WB

ICC/IF

<b>Application notes</b>	ICC/IF: Use at a concentration of 10 µg/ml. WB: 1/500 - 1/1000. Predicted molecular weight: 44 kDa.
--------------------------	--

Not yet tested in other applications.

Optimal dilutions/concentrations should be determined by the end user.

## Target

### Function

Dual specificity kinase that activates the JUN kinases MAPK8 (JNK1) and MAPK9 (JNK2) as well as MAPK14 (p38) but not MAPK1 (ERK2) or MAPK3 (ERK1).

### Tissue specificity

Abundant expression is seen in the skeletal muscle. It is also widely expressed in other tissues.

### Sequence similarities

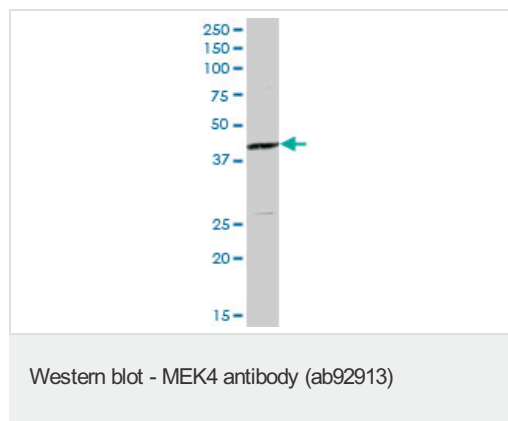
Belongs to the protein kinase superfamily. STE Ser/Thr protein kinase family. MAP kinase kinase subfamily.

Contains 1 protein kinase domain.

### Post-translational modifications

Activated by phosphorylation on Ser/Thr by MAP kinase kinase kinases.

## Images

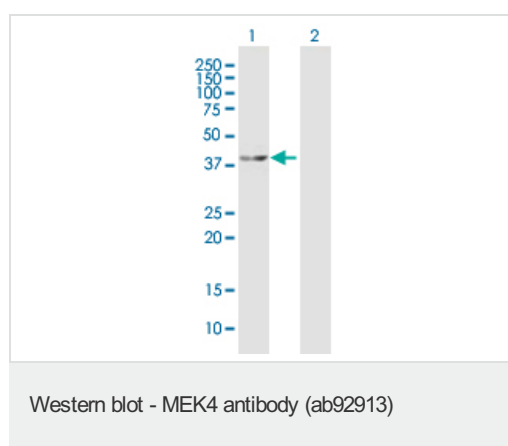


Anti-MEK4 antibody (ab92913) at 1/500

dilution + Human pancreas tissue lysate at 50

µg

**Predicted band size:** 44 kDa



**All lanes :** Anti-MEK4 antibody (ab92913) at

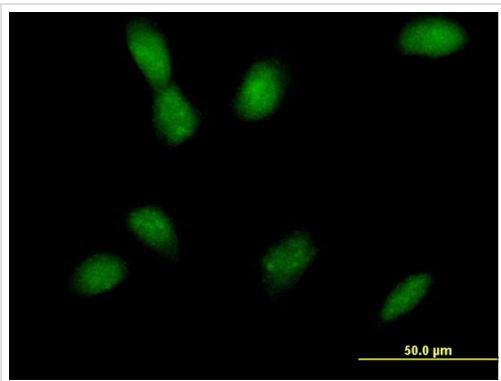
1/500 dilution

**Lane 1 :** MEK4 transfected 293T cell lysate

**Lane 2 :** Non transfected 293T cell lysate

Lysates/proteins at 25 µg per lane.

**Predicted band size:** 44 kDa



ab92913, at 10 μg/ml, staining MEK4 in HeLa cell by Immunofluorescence.

Immunocytochemistry/ Immunofluorescence - MEK4 antibody (ab92913)

**Please note:** All products are "FOR RESEARCH USE ONLY AND ARE NOT INTENDED FOR DIAGNOSTIC OR THERAPEUTIC USE"

### Our Abpromise to you: Quality guaranteed and expert technical support

- Replacement or refund for products not performing as stated on the datasheet
- Valid for 12 months from date of delivery
- Response to your inquiry within 24 hours
- We provide support in Chinese, English, French, German, Japanese and Spanish
- Extensive multi-media technical resources to help you
- We investigate all quality concerns to ensure our products perform to the highest standards

If the product does not perform as described on this datasheet, we will offer a refund or replacement. For full details of the Abpromise, please visit <http://www.abcam.com/abpromise> or contact our technical team.

### Terms and conditions

- Guarantee only valid for products bought direct from Abcam or one of our authorized distributors