

Product datasheet

Anti-DLGAP1 antibody [S127-31] ab93611

1 Image

Overview

<b>Product name</b>	Anti-DLGAP1 antibody [S127-31]
<b>Description</b>	Mouse monoclonal [S127-31] to DLGAP1
<b>Tested applications</b>	<b>Suitable for:</b> WB, IP, IHC-P, IHC-Fr, ICC/IF
<b>Species reactivity</b>	<b>Reacts with:</b> Mouse, Rat, Human
<b>Immunogen</b>	Fusion protein, corresponding to C terminal amino acids 772 - 992 of Rat DLGAP1 (Acc. No. P97836).
<b>Positive control</b>	WB: rat brain lysate

Properties

<b>Form</b>	Liquid
<b>Storage instructions</b>	Shipped at 4°C. Upon delivery aliquot and store at -20°C. Avoid freeze / thaw cycles.
<b>Storage buffer</b>	Preservative: 0.09% Sodium Azide Constituents: 50% Glycerol, PBS, pH 7.4
<b>Purity</b>	Protein G purified
<b>Clonality</b>	Monoclonal
<b>Clone number</b>	S127-31
<b>Isotype</b>	IgG2b

Applications

Our [Abpromise guarantee](#) covers the use of **ab93611** in the following tested applications.

The application notes include recommended starting dilutions; optimal dilutions/concentrations should be determined by the end user.

Application	Abreviews	Notes
WB		
IP		
IHC-P		

Application	Abreviews	Notes
-------------	-----------	-------

IHC-Fr

ICC/IF

### Application notes

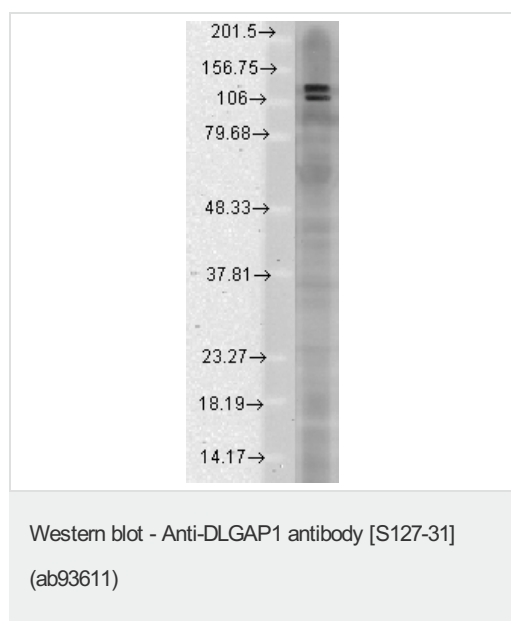
ICC/IF: Use at a concentration of 0.1 - 1 µg/ml (perox) or 1 - 10 µg/ml (IF).  
 IHC-P: Use at a concentration of 0.1 - 1 µg/ml (perox) or 1 - 10 µg/ml (IF).  
 IHC-Fr: Use at a concentration 0.1 - 1 µg/ml (perox) or 1 - 10 µg/ml (IF).  
 IP: Use at an assay dependent dilution.  
 WB: Use at a concentration of 1 - 10 µg/ml. Detects bands of approximately 110 kDa (DLGAP2) and 120 kDa (DLGAP1, 3 and 4).

Not yet tested in other applications.  
 Optimal dilutions/concentrations should be determined by the end user.

### Target

**Function** Part of the postsynaptic scaffold in neuronal cells.  
**Tissue specificity** Expressed in brain.  
**Sequence similarities** Belongs to the SAPAP family.  
**Cellular localization** Cell membrane. Cell junction > synapse > postsynaptic cell membrane > postsynaptic density. Cell junction > synapse. Found in postsynaptic density of neuronal cells.

### Images



**Predicted band size :** 110 , 120 kDa  
 Western blot detection of DLGAP1 in Rat brain membrane lysates using ab93611 at 1:1000 dilution.

**Please note:** All products are "FOR RESEARCH USE ONLY AND ARE NOT INTENDED FOR DIAGNOSTIC OR THERAPEUTIC USE"

## **Our Abpromise to you: Quality guaranteed and expert technical support**

---

- Replacement or refund for products not performing as stated on the datasheet
- Valid for 12 months from date of delivery
- Response to your inquiry within 24 hours
  
- We provide support in Chinese, English, French, German, Japanese and Spanish
- Extensive multi-media technical resources to help you
- We investigate all quality concerns to ensure our products perform to the highest standards

If the product does not perform as described on this datasheet, we will offer a refund or replacement. For full details of the Abpromise, please visit <http://www.abcam.com/abpromise> or contact our technical team.

## **Terms and conditions**

---

- Guarantee only valid for products bought direct from Abcam or one of our authorized distributors