

Product datasheet

Anti-MTMR12 antibody ab94444

1 Image

Overview

Product name	Anti-MTMR12 antibody
Description	Rabbit polyclonal to MTMR12
Host species	Rabbit
Tested applications	Suitable for: WB
Species reactivity	Reacts with: Human Predicted to work with: Mouse, Rat, Rabbit, Horse, Chicken, Guinea pig, Cow, Cat, Dog, Zebrafish
Immunogen	Synthetic peptide corresponding to a region within internal sequence amino acids 540 - 589 (LYVEKPKLDKKGQRKGMRFKHQRQLSLPLTQSKSSPKRGFFREETHLIKN) of Human MTMR12 (NP_001035536) Run BLAST with Run BLAST with
Positive control	COLO205 cell lysate

Properties

Form	Liquid
Storage instructions	Shipped at 4°C. Upon delivery aliquot and store at -20°C. Avoid repeated freeze / thaw cycles.
Storage buffer	Preservative: None Constituents: 2% Sucrose, PBS
Purity	Immunogen affinity purified
Clonality	Polyclonal
Isotype	IgG

Applications

Our [Abpromise guarantee](#) covers the use of **ab94444** in the following tested applications.

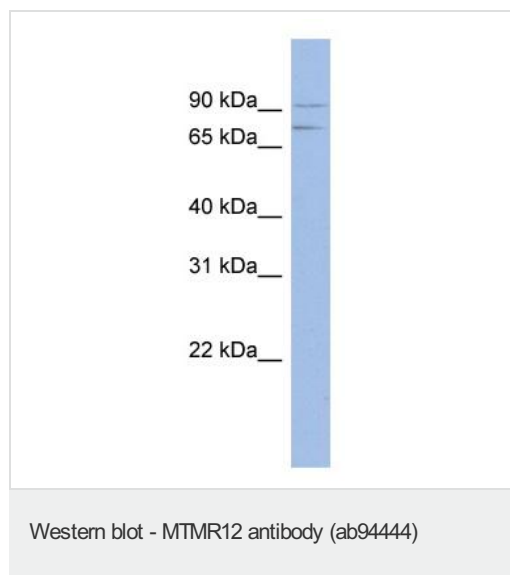
The application notes include recommended starting dilutions; optimal dilutions/concentrations should be determined by the end user.

Application	Abreviews	Notes
WB		Use a concentration of 1 µg/ml. Predicted molecular weight: 86 kDa. Good results were obtained when blocked with 5% non-fat dry milk in 0.05% PBS-T.

Target

Function	Catalytically inactive phosphatase that plays a role as an adapter for the phosphatase myotubularin to regulate myotubularin intracellular location.
Tissue specificity	Ubiquitous with prominent expression in brain, heart, kidney, placenta, and lung.
Sequence similarities	Belongs to the protein-tyrosine phosphatase family. Non-receptor class myotubularin subfamily. Contains 1 myotubularin phosphatase domain.
Cellular localization	Cytoplasm. Localizes to punctate vesicles when associated with MTM1.

Images



Anti-MTMR12 antibody (ab94444) at 1 µg/ml
(in 5% skim milk / PBS buffer) + COLO205
cell lysate at 10 µg

Secondary

HRP conjugated anti-Rabbit IgG at 1/50000
dilution

Predicted band size: 86 kDa

Gel concentration: 12%

Please note: All products are "FOR RESEARCH USE ONLY AND ARE NOT INTENDED FOR DIAGNOSTIC OR THERAPEUTIC USE"

Our Abpromise to you: Quality guaranteed and expert technical support

- Replacement or refund for products not performing as stated on the datasheet
- Valid for 12 months from date of delivery
- Response to your inquiry within 24 hours
- We provide support in Chinese, English, French, German, Japanese and Spanish
- Extensive multi-media technical resources to help you
- We investigate all quality concerns to ensure our products perform to the highest standards

If the product does not perform as described on this datasheet, we will offer a refund or replacement. For full details of the Abpromise, please visit <http://www.abcam.com/abpromise> or contact our technical team.

Terms and conditions

- Guarantee only valid for products bought direct from Abcam or one of our authorized distributors