

## Product datasheet

# Anti-PGM1 antibody ab94601

[2 Images](#)

### Overview

<b>Product name</b>	Anti-PGM1 antibody
<b>Description</b>	Rabbit polyclonal to PGM1
<b>Host species</b>	Rabbit
<b>Tested applications</b>	<b>Suitable for:</b> ICC/IF, WB
<b>Species reactivity</b>	<b>Reacts with:</b> Human <b>Predicted to work with:</b> Mouse, Rat, Rabbit, Horse, Chicken, Guinea pig, Cow, Cat, Dog, Pig, Zebrafish
<b>Immunogen</b>	Synthetic peptide corresponding to a region within internal sequence amino acids 513-562 (TIRLYDSYE KDVAKINQDP QVMLAPLISI ALKVSQ LQER TGRTAPT VIT) of Human PGM1 (NP_002624). <a href="#">Run BLAST with ExPASy</a> <a href="#">Run BLAST with NCBI</a>
<b>Positive control</b>	Hela cell lysate

### Properties

<b>Form</b>	Liquid
<b>Storage instructions</b>	Shipped at 4°C. Upon delivery aliquot and store at -20°C. Avoid repeated freeze / thaw cycles.
<b>Storage buffer</b>	Preservative: None Constituents: 2% Sucrose, PBS
<b>Purity</b>	Immunogen affinity purified
<b>Clonality</b>	Polyclonal
<b>Isotype</b>	IgG

### Applications

Our [Abpromise guarantee](#) covers the use of **ab94601** in the following tested applications.

The application notes include recommended starting dilutions; optimal dilutions/concentrations should be determined by the end user.

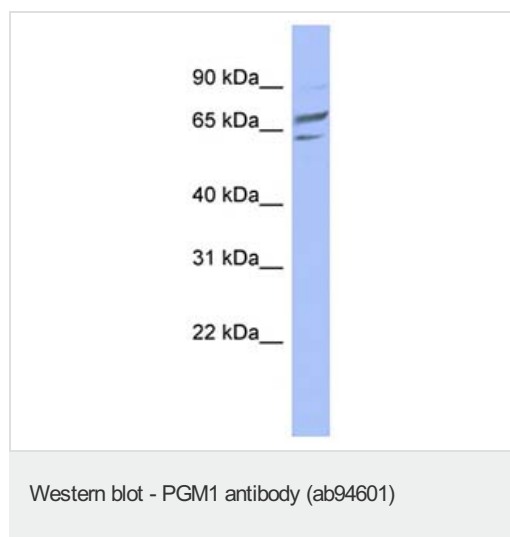
Application	Abreviews	Notes
ICC/IF		Use a concentration of 5 µg/ml.

Application	Abreviews	Notes
WB		Use a concentration of 1 µg/ml. Predicted molecular weight: 61 kDa. Good results were obtained when blocked with 5% non-fat dry milk in 0.05% PBS-T.

## Target

<b>Function</b>	This enzyme participates in both the breakdown and synthesis of glucose.
<b>Involvement in disease</b>	Defects in PGM1 are the cause of glycogen storage disease type 14 (GSD14) [MIM:612934]. A metabolic disorder resulting in a myopathy characterized by exercise-induced intolerance with episodes of rhabdomyolysis, normal elevation of lactate, and hyperammonemia on a forearm-exercise test.
<b>Sequence similarities</b>	Belongs to the phosphohexose mutase family.
<b>Cellular localization</b>	Cytoplasm.

## Images



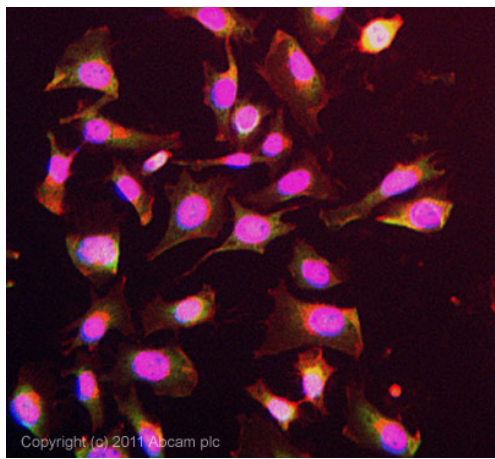
Anti-PGM1 antibody (ab94601) at 1 µg/ml (in 5% skim milk / PBS buffer) + Hela cell lysate at 10 µg

### Secondary

HRP conjugated anti-Rabbit IgG at 1/50000 dilution

**Predicted band size:** 61 kDa

Gel concentration: 12%



Immunocytochemistry/ Immunofluorescence-PGM1 antibody(ab94601)

ICC/IF image of ab94601 stained HeLa cells. The cells were 4% formaldehyde fixed (10 min) and then incubated in 1%BSA / 10% normal goat serum / 0.3M glycine in 0.1% PBS-Tween for 1h to permeabilise the cells and block non-specific protein-protein interactions. The cells were then incubated with the antibody (ab94601, 5µg/ml) overnight at +4°C. The secondary antibody (green) was ab96899, DyLight® 488 goat anti-rabbit IgG (H+L) used at a 1/250 dilution for 1h. Alexa Fluor® 594 WGA was used to label plasma membranes (red) at a 1/200 dilution for 1h. DAPI was used to stain the cell nuclei (blue) at a concentration of 1.43µM.

**Please note:** All products are "FOR RESEARCH USE ONLY AND ARE NOT INTENDED FOR DIAGNOSTIC OR THERAPEUTIC USE"

### Our Abpromise to you: Quality guaranteed and expert technical support

- Replacement or refund for products not performing as stated on the datasheet
- Valid for 12 months from date of delivery
- Response to your inquiry within 24 hours
- We provide support in Chinese, English, French, German, Japanese and Spanish
- Extensive multi-media technical resources to help you
- We investigate all quality concerns to ensure our products perform to the highest standards

If the product does not perform as described on this datasheet, we will offer a refund or replacement. For full details of the Abpromise, please visit <http://www.abcam.com/abpromise> or contact our technical team.

### Terms and conditions

- Guarantee only valid for products bought direct from Abcam or one of our authorized distributors