


Product datasheet

Anti-NCS1 antibody ab94662

★ ★ ★ ☆ ☆ 1 Abreviews 2 Images

Overview

Product name	Anti-NCS1 antibody
Description	Rabbit polyclonal to NCS1
Host species	Rabbit
Tested applications	Suitable for: IHC-P, WB
Species reactivity	Reacts with: Human Predicted to work with: Mouse, Rat, Horse, Chicken, Guinea pig, Cow, Cat, Dog, Drosophila melanogaster, Zebrafish 
Immunogen	Synthetic peptide corresponding to internal sequence amino acids 141-190 (EENTPEKRVD RIFAMMDKNADGKLT LQEFQEGSKADPSVQALS LYDGLV) of Human NCS1 (NP_055101). Run BLAST with Run BLAST with
Positive control	Human fetal thymus lysate

Properties

Form	Liquid
Storage instructions	Shipped at 4°C. Upon delivery aliquot and store at -20°C. Avoid repeated freeze / thaw cycles.
Storage buffer	Preservative: None Constituents: 2% Sucrose, PBS
Purity	Immunogen affinity purified
Clonality	Polyclonal
Isotype	IgG

Applications

Our [Abpromise guarantee](#) covers the use of **ab94662** in the following tested applications.

The application notes include recommended starting dilutions; optimal dilutions/concentrations should be determined by the end user.

Application	Abreviews	Notes
IHC-P		Use a concentration of 5 - 10 µg/ml.
WB	★★★★☆	Use a concentration of 1 µg/ml. Predicted molecular weight: 22 kDa. Good results were obtained when blocked with 5% non-fat dry milk in 0.05% PBS-T.

Target

Function

Neuronal calcium sensor, regulator of G protein-coupled receptor phosphorylation in a calcium dependent manner. Directly regulates GRK1 (RHOK), but not GRK2 to GRK5. Can substitute for calmodulin (By similarity). Stimulates P4KB kinase activity (By similarity). Involved in long-term synaptic plasticity through its interaction with PICK1 (By similarity). May also play a role in neuron differentiation through inhibition of the activity of N-type voltage-gated calcium channel.

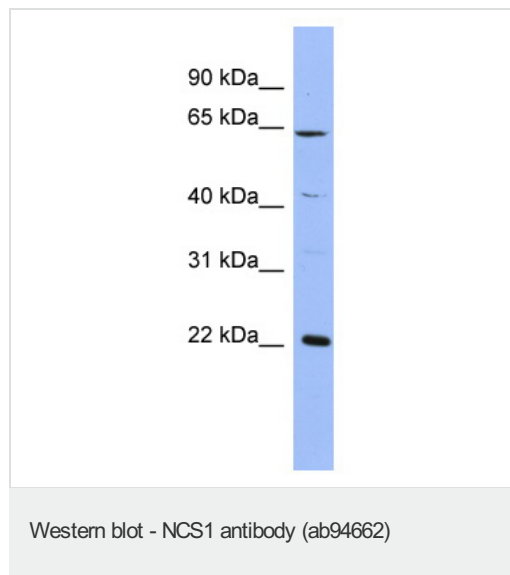
Sequence similarities

Belongs to the recoverin family.
Contains 4 EF-hand domains.

Cellular localization

Golgi apparatus > Golgi stack membrane. Cell junction > synapse > postsynaptic cell membrane > postsynaptic density. Cytoplasm > perinuclear region. Cell membrane. Associated with Golgi stacks. Post-synaptic densities of dendrites, and in the pre-synaptic nerve terminal at neuromuscular junctions.

Images



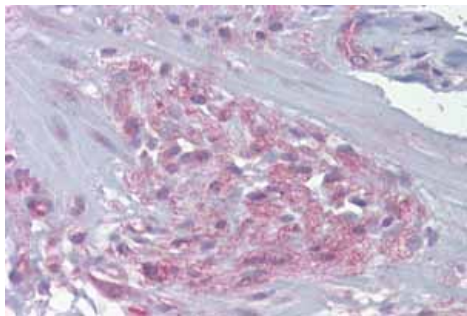
Anti-NCS1 antibody (ab94662) at 1 µg/ml +
Human fetal thymus lysate at 10 µg

Secondary

HRP conjugated anti-Rabbit IgG at 1/50000
dilution

Predicted band size: 22 kDa

Gel concentration: 12%



Immunohistochemistry (Formalin/PFA-fixed paraffin-embedded sections) analysis of human small intestine, myenteric plexus tissue labelling NCS1 with ab94662 at 5-10µg/ml.

Immunohistochemistry (Formalin/PFA-fixed paraffin-embedded sections)-Anti-NCS1 antibody(ab94662)

Please note: All products are "FOR RESEARCH USE ONLY AND ARE NOT INTENDED FOR DIAGNOSTIC OR THERAPEUTIC USE"

Our Abpromise to you: Quality guaranteed and expert technical support

- Replacement or refund for products not performing as stated on the datasheet
- Valid for 12 months from date of delivery
- Response to your inquiry within 24 hours
- We provide support in Chinese, English, French, German, Japanese and Spanish
- Extensive multi-media technical resources to help you
- We investigate all quality concerns to ensure our products perform to the highest standards

If the product does not perform as described on this datasheet, we will offer a refund or replacement. For full details of the Abpromise, please visit <http://www.abcam.com/abpromise> or contact our technical team.

Terms and conditions

- Guarantee only valid for products bought direct from Abcam or one of our authorized distributors