


Product datasheet

Anti-ACF1 / BAZ1A antibody ab94749

1 References 1 Image

Overview

| | |
|----------------------------|--|
| Product name | Anti-ACF1 / BAZ1A antibody |
| Description | Rabbit polyclonal to ACF1 / BAZ1A |
| Host species | Rabbit |
| Tested applications | Suitable for: WB |
| Species reactivity | Reacts with: Human Predicted to work with: Mouse, Rat, Rabbit, Horse, Guinea pig, Cow, Cat, Dog  |
| Immunogen | Synthetic peptide corresponding to a region within the internal sequence amino acids 1260-1309 (LPKRGRPQVR LPVKTRGKLS SSFSSRGQQQ EPGRYPSRSQ QSTPKTTVSS) of Human ACF1/ BAZ1A (NP_038476). Run BLAST with ExPASy Run BLAST with NCBI |
| Positive control | Human fetal stomach lysate |

Properties

| | |
|-----------------------------|--|
| Form | Liquid |
| Storage instructions | Shipped at 4°C. Upon delivery aliquot and store at -20°C. Avoid repeated freeze / thaw cycles. |
| Storage buffer | Preservative: None Constituents: 2% Sucrose, PBS |
| Purity | Immunogen affinity purified |
| Clonality | Polyclonal |
| Isotype | IgG |

Applications

Our [Abpromise guarantee](#) covers the use of **ab94749** in the following tested applications.

The application notes include recommended starting dilutions; optimal dilutions/concentrations should be determined by the end user.

| Application | Abreviews | Notes |
|-------------|-----------|---|
| WB | | Use a concentration of 1 µg/ml. Predicted molecular weight: 179 kDa. Good results were obtained when blocked with 5% non-fat dry milk in 0.05% PBS-T. |

Target

Function

Component of the ACF complex, an ATP-dependent chromatin remodeling complex, that regulates spacing of nucleosomes using ATP to generate evenly spaced nucleosomes along the chromatin. The ATPase activity of the complex is regulated by the length of flanking DNA. Also involved in facilitating the DNA replication process. BAZ1A is the accessory, non-catalytic subunit of the complex which can enhance and direct the process provided by the ATPase subunit, SMARCA5, probably through targeting pericentromeric heterochromatin in late S phase. Moves end-positioned nucleosomes to a predominantly central position. May have a role in nuclear receptor-mediated transcription repression.

Component of the histone-fold protein complex CHRAC complex which facilitates nucleosome sliding by the ACF complex and enhances ACF-mediated chromatin assembly. The C-terminal regions of both CHRAC1 and POLE1 are required for these functions.

Tissue specificity

Highly expressed in testis and at low or undetectable levels in other tissues analyzed.

Sequence similarities

Belongs to the WAL family.

Contains 1 bromo domain.

Contains 1 DDT domain.

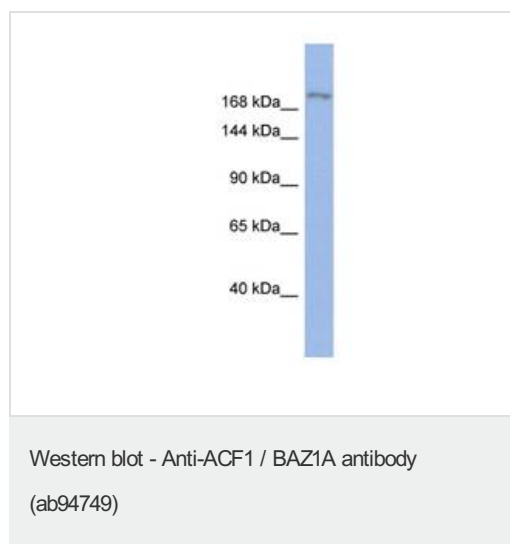
Contains 1 PHD-type zinc finger.

Contains 1 WAC domain.

Cellular localization

Nucleus. May target the CHRAC complex to heterochromatin.

Images



Anti-ACF1 / BAZ1A antibody (ab94749) at 1 μ g/ml (in 5% skim milk / PBS buffer) + Human fetal stomach lysate at 10 μ g

Secondary

HRP conjugated anti-Rabbit IgG at 1/50000 dilution

Predicted band size: 179 kDa

Gel concentration: 6-18%

Please note: All products are "FOR RESEARCH USE ONLY AND ARE NOT INTENDED FOR DIAGNOSTIC OR THERAPEUTIC USE"

Our Abpromise to you: Quality guaranteed and expert technical support

- Replacement or refund for products not performing as stated on the datasheet
- Valid for 12 months from date of delivery
- Response to your inquiry within 24 hours

- We provide support in Chinese, English, French, German, Japanese and Spanish
- Extensive multi-media technical resources to help you
- We investigate all quality concerns to ensure our products perform to the highest standards

If the product does not perform as described on this datasheet, we will offer a refund or replacement. For full details of the Abpromise, please visit <http://www.abcam.com/abpromise> or contact our technical team.

Terms and conditions

- Guarantee only valid for products bought direct from Abcam or one of our authorized distributors