

Product datasheet

Anti-PDE4D antibody ab97796

[2 Images](#)

Overview

Product name	Anti-PDE4D antibody
Description	Rabbit polyclonal to PDE4D
Host species	Rabbit
Tested applications	Suitable for: WB, ICC/IF
Species reactivity	Reacts with: Human
Immunogen	Synthetic peptide corresponding to a region within amino acids 610 and 673 of Human PDE4D (NP_006194; UniProt ID: Q08499 isoform 2).
Positive control	WB: HeLa S3 whole cell lysate ICC/IF: A431 cells

Properties

Form	Liquid
Storage instructions	Shipped at 4°C. Upon delivery aliquot. Store at -20°C or -80°C. Avoid freeze / thaw cycle.
Storage buffer	Preservative: 0.01% Thimerosal (merthiolate) Constituents: 10% Glycerol, 0.1M Tris, 0.1M Glycine, pH 7.0
Purity	Immunogen affinity purified
Clonality	Polyclonal
Isotype	IgG

Applications

Our [Abpromise guarantee](#) covers the use of **ab97796** in the following tested applications.

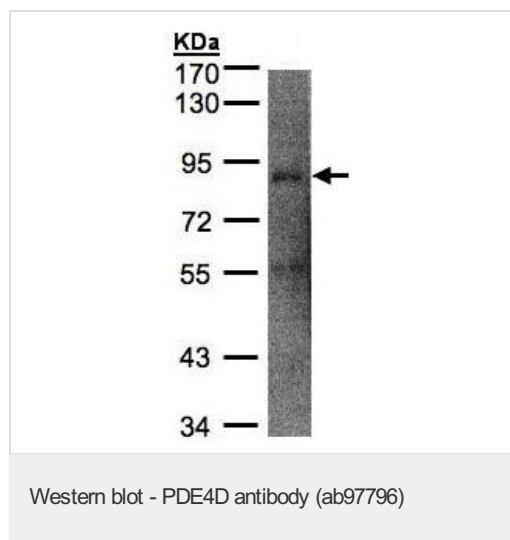
The application notes include recommended starting dilutions; optimal dilutions/concentrations should be determined by the end user.

Application	Abreviews	Notes
WB		1/500 - 1/3000. Predicted molecular weight: for isoform 2, 76 kDa.
ICC/IF		1/100 - 1/200.

Target

Function	Hydrolyzes the second messenger cAMP, which is a key regulator of many important physiological processes.
Tissue specificity	Widespread; most abundant in skeletal muscle. Isoform 6 is detected in brain. Isoform 8 is detected in brain, placenta, lung and kidney. Isoform 7 is detected in heart and skeletal muscle.
Pathway	Purine metabolism; 3',5'-cyclic AMP degradation; AMP from 3',5'-cyclic AMP: step 1/1.
Involvement in disease	Note=Genetic variations in PDE4D might be associated with susceptibility to stroke. PubMed:17006457 states that association with stroke has to be considered with caution.
Sequence similarities	Belongs to the cyclic nucleotide phosphodiesterase family. PDE4 subfamily.
Post-translational modifications	Isoform 3 and isoform 7 are activated by phosphorylation (in vitro), but not isoform 6. Isoform N3 and isoform 12 are phosphorylated on Ser-49, Ser-51, Ser-55 and Ser-59.
Cellular localization	Cytoplasm. Membrane. Cytoplasm > cytoskeleton. Cytoplasm > cytoskeleton > centrosome. Found in the soluble fraction, associated with membranes, and associated with the cytoskeleton and the centrosome.

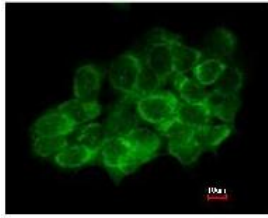
Images



Anti-PDE4D antibody (ab97796) at 1/1000 dilution + HeLa S3 whole cell lysate at 30 µg

Predicted band size: for isoform 2, 76 kDa

7.5% SDS PAGE



Immunofluorescence analysis of PDE4D in paraformaldehyde fixed A431, using ab97796 at a 1/200 dilution. Lower image was merged with DNA probe.

Immunocytochemistry/ Immunofluorescence -
PDE4D antibody (ab97796)

Please note: All products are "FOR RESEARCH USE ONLY AND ARE NOT INTENDED FOR DIAGNOSTIC OR THERAPEUTIC USE"

Our Abpromise to you: Quality guaranteed and expert technical support

- Replacement or refund for products not performing as stated on the datasheet
- Valid for 12 months from date of delivery
- Response to your inquiry within 24 hours
- We provide support in Chinese, English, French, German, Japanese and Spanish
- Extensive multi-media technical resources to help you
- We investigate all quality concerns to ensure our products perform to the highest standards

If the product does not perform as described on this datasheet, we will offer a refund or replacement. For full details of the Abpromise, please visit <http://www.abcam.com/abpromise> or contact our technical team.

Terms and conditions

- Guarantee only valid for products bought direct from Abcam or one of our authorized distributors